

UK Office

Everest Biotech Ltd

Cherwell Innovation Centre
77 Heyford Park
Upper Heyford
Oxfordshire
OX25 5HD
UK

Enquiries:

info@everestbiotech.com

Sales:

sales@everestbiotech.com

Tech support:

support@everestbiotech.com

Tel: +44 (0)1869 238326

www.everestbiotech.com

**Research Use Only. Not for
diagnostic or therapeutic use.**

EB11694-B - Goat Anti-Endophilin-A1 / SH3GL2, Biotinylated Antibody

Size: 100µg specific antibody in 200µl



Target Protein

Principal Names: SH3GL2, SH3 domain containing GRB2 like 2, CNSA2, EEN-B1, SH3D2A, SH3P4, Endophilin A1 BAR domain, SH3 domain protein 2A, SH3 domain-containing GRB2-like protein 2, SH3-domain GRB2-like 2, bA335L15.1 (SH3-domain GRB2-like 2), endophilin-1

Official Symbol: SH3GL2

Accession Number(s): NP_003017.1

Human GeneID(s): [6456](#)

Immunogen

Peptide with sequence CSLEFPTGDSTQPN., from the internal region of the protein sequence according to NP_003017.1.

Please note the [peptide](#) is available for sale.

Purification and Storage

Purified from goat serum by ammonium sulphate precipitation followed by antigen affinity chromatography using the immunizing peptide.

Supplied at 0.5 mg/ml in Tris saline, 0.02% sodium azide, pH7.3 with 0.5% bovine serum albumin.

Aliquot and store at -20°C. Minimize freezing and thawing.

Applications Tested

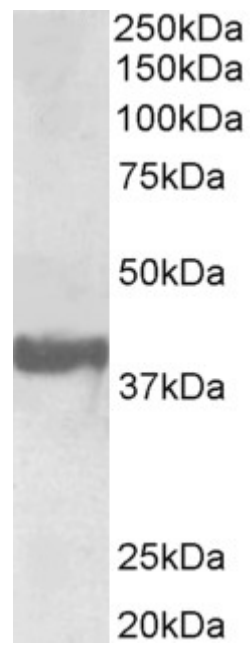
Peptide ELISA: antibody detection limit dilution 1:64000.

Western blot: Approx 38kDa band observed in Human Brain (Frontal Cortex) lysates (calculated MW of 40.0kDa according to NP_003017.1). Recommended concentration: 0.3-1µg/ml. See non-biotinylated parental product's datasheet for further QC data

Species Reactivity

Tested: Human

Expected from sequence similarity: Human, Pig



Biotinylated EB11694 (0.3 μ g/ml) staining of Human Frontal Cortex lysate (35 μ g protein in RIPA buffer). Primary incubation was 1 hour. Detected by chemiluminescence.