

## UK Office

### Everest Biotech Ltd

Cherwell Innovation Centre  
77 Heyford Park  
Upper Heyford  
Oxfordshire  
OX25 5HD  
UK

Enquiries:

[info@everestbiotech.com](mailto:info@everestbiotech.com)

Sales:

[sales@everestbiotech.com](mailto:sales@everestbiotech.com)

Tech support:

[support@everestbiotech.com](mailto:support@everestbiotech.com)

Tel: +44 (0)1869 238326

[www.everestbiotech.com](http://www.everestbiotech.com)

**Research Use Only. Not for  
diagnostic or therapeutic use.**

## EB11694 - Goat Anti-Endophilin-A1 / SH3GL2 Antibody

Size: 100µg specific antibody in 200µl



### Target Protein

**Principal Names:** bA335L15.1 (SH3-domain GRB2-like 2), CNSA2, EEN-B1, endophilin, Endophilin A1 BAR domain, endophilin-1, FLJ20276, FLJ25015, OTTHUMP00000021084, SH3 domain protein 2A, SH3 domain-containing GRB2-like protein 2, SH3D2A, SH3-domain GRB2-like 2, SH3GL2, SH3P4

**Official Symbol:** SH3GL2

**Accession Number(s):** NP\_003017.1

**Human GeneID(s):** [6456](#)

### Immunogen

Peptide with sequence C-SLEFPTGDSTQPN, from the internal region of the protein sequence according to NP\_003017.1.

Please note the [peptide](#) is available for sale.

### Purification and Storage

Purified from goat serum by ammonium sulphate precipitation followed by antigen affinity chromatography using the immunizing peptide.

Supplied at 0.5 mg/ml in Tris saline, 0.02% sodium azide, pH7.3 with 0.5% bovine serum albumin.

Aliquot and store at -20°C. Minimize freezing and thawing.

### Applications Tested

**Peptide ELISA:** antibody detection limit dilution 1:64000.

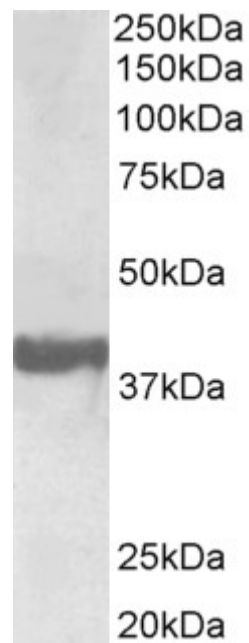
**Western blot:** Approx 38kDa band observed in Human Brain (Frontal Cortex) lysates (calculated MW of 40.0kDa according to NP\_003017.1). Recommended concentration: 0.3-1µg/ml.

**IHC:** In paraffin embedded Human Cerebral Cortex shows staining of cytoplasm in some but not all neuronal cells. Recommended concentration, 5-10µg/ml.

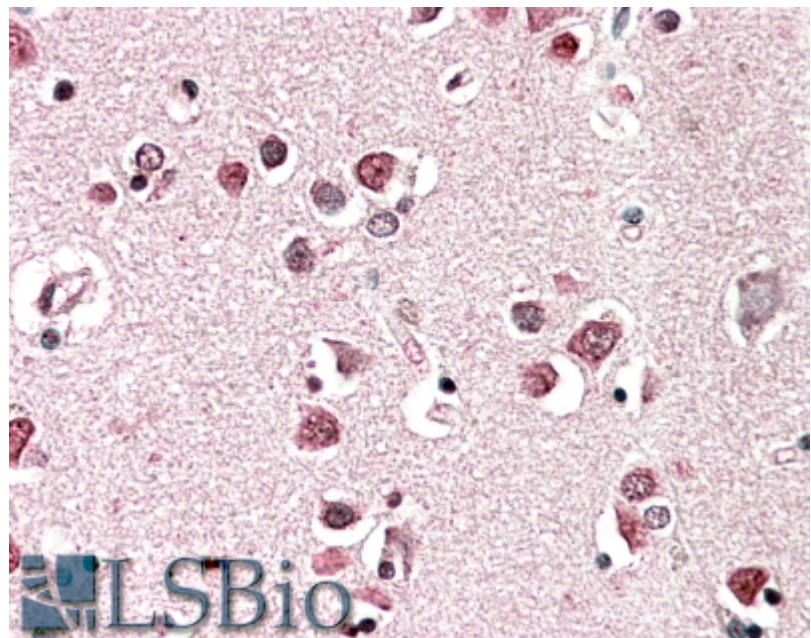
### Species Reactivity

**Tested:** Human

**Expected from sequence similarity:** Human, Pig



EB11694 (0.3 $\mu$ g/ml) staining of Human Frontal Cortex lysate (35 $\mu$ g protein in RIPA buffer). Primary incubation was 1 hour. Detected by chemiluminescence.



EB11694 (5 $\mu$ g/ml) staining of paraffin embedded Human Cerebral Cortex. Steamed antigen retrieval with citrate buffer pH 6, AP-staining.