

UK Office

Everest Biotech Ltd

Cherwell Innovation Centre
77 Heyford Park
Upper Heyford
Oxfordshire
OX25 5HD
UK

Enquiries:

info@everestbiotech.com

Sales:

sales@everestbiotech.com

Tech support:

support@everestbiotech.com

Tel: +44 (0)1869 238326

www.everestbiotech.com

**Research Use Only. Not for
diagnostic or therapeutic use.**

EB09676 - Goat Anti-EML5 Antibody

Size: 100µg specific antibody in 200µl



Target Protein

Principal Names: EML5, echinoderm microtubule associated protein like 5, DKFZp781D1122, EMAP-2, HuEMAP-2

Official Symbol: EML5

Accession Number(s): NP_899243.1

Human GeneID(s): [161436](#)

Non-Human GeneID(s): 319670 (mouse), 444982 (rat)

Immunogen

Peptide with sequence C-QQKEPSIDERQG, from the internal region of the protein sequence according to NP_899243.1.

Please note the [peptide](#) is available for sale.

Purification and Storage

Purified from goat serum by ammonium sulphate precipitation followed by antigen affinity chromatography using the immunizing peptide.

Supplied at 0.5 mg/ml in Tris saline, 0.02% sodium azide, pH7.3 with 0.5% bovine serum albumin.

Aliquot and store at -20°C. Minimize freezing and thawing.

Applications Tested

Peptide ELISA: antibody detection limit dilution 1:32000.

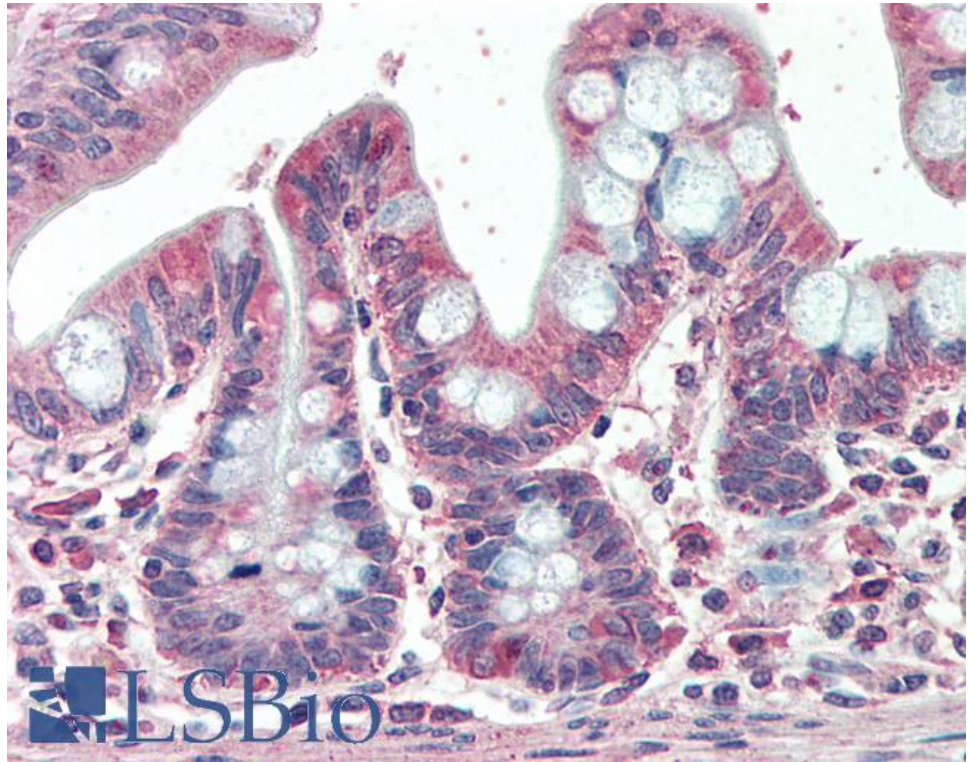
Western blot: Preliminary experiments in Human Brain (Cerebellum, Cerebral Cortex and Hippocampus) lysates gave no specific signal but low background (at antibody concentration up to 1µg/ml).

IHC: Paraffin embedded Human Small Intestine. Recommended concentration: 5µg/ml.

Species Reactivity

Tested: Human

Expected from sequence similarity: Human, Mouse, Rat, Dog, Cow



EB09676 (5µg/ml) staining of paraffin embedded Human Small Intestine. Steamed antigen retrieval with citrate buffer pH 6, AP-staining.