

UK Office

Everest Biotech Ltd

Cherwell Innovation Centre
77 Heyford Park
Upper Heyford
Oxfordshire
OX25 5HD
UK

Enquiries:

info@everestbiotech.com

Sales:

sales@everestbiotech.com

Tech support:

support@everestbiotech.com

Tel: +44 (0)1869 238326

www.everestbiotech.com

**Research Use Only. Not for
diagnostic or therapeutic use.**

EB05503 - Goat Anti-ELF3 / ERT/ ESX Antibody

Size: 100µg specific antibody in 200µl



Target Protein

Principal Names: ELF3, ERT, E74-like factor 3 (ets domain transcription factor, epithelial-specific), EPR-1, ESE-1, E74-like factor 3 (ets domain transcription factor), ets domain transcription factor, serine box (epithelial-specific), E74-like factor 3 (ETS domain transcription factor, serine box, epithelial-specific)

Official Symbol: ELF3

Accession Number(s): NP_004424.2

Human GeneID(s): [1999](#)

Immunogen

Peptide with sequence C-SGWKEEEVLQSRN, from the C Terminus of the protein sequence according to NP_004424.2.

Please note the [peptide](#) is available for sale.

Purification and Storage

Purified from goat serum by ammonium sulphate precipitation followed by antigen affinity chromatography using the immunizing peptide.

Supplied at 0.5 mg/ml in Tris saline, 0.02% sodium azide, pH7.3 with 0.5% bovine serum albumin.

Aliquot and store at -20°C. Minimize freezing and thawing.

Applications Tested

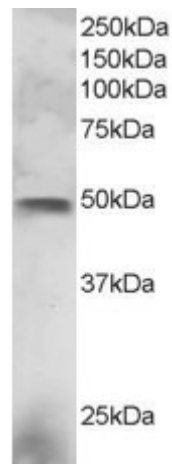
Peptide ELISA: antibody detection limit dilution 1:32000.

Western blot: Approx 48 kDa band observed in NCI-H460 lysate (calculated MW of 41.5kDa according to NP_004424.2). In transfected HEK293 transiently expressing ELF3 a band of approx. 40kDa is observed. This band is not observed in the non-transfected HEK293. Recommended for use at 2-4µg/ml.

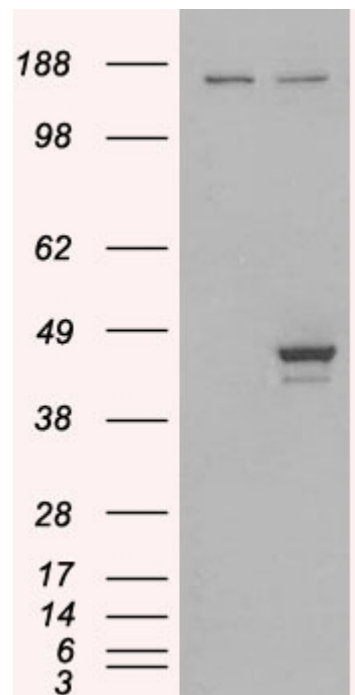
Species Reactivity

Tested: Human

Expected from sequence similarity: Human



EB05503 staining (3µg/ml) of NCI-H460 lysate (RIPA buffer, 30µg total protein per lane). Primary incubated for 1 hour. Detected by western blot using chemiluminescence.



HEK293 overexpressing ELF3 (RC200631) and probed with EB05503 (mock transfection in first lane), tested by Origene.