

## UK Office

### Everest Biotech Ltd

Cherwell Innovation Centre  
77 Heyford Park  
Upper Heyford  
Oxfordshire  
OX25 5HD  
UK

Enquiries:

[info@everestbiotech.com](mailto:info@everestbiotech.com)

Sales:

[sales@everestbiotech.com](mailto:sales@everestbiotech.com)

Tech support:

[support@everestbiotech.com](mailto:support@everestbiotech.com)

Tel: +44 (0)1869 238326

[www.everestbiotech.com](http://www.everestbiotech.com)

**Research Use Only. Not for  
diagnostic or therapeutic use.**

## EB05236 - Goat Anti-DUSP16 Antibody

Size: 100µg specific antibody in 200µl



### Target Protein

**Principal Names:** DUSP16, dual specificity phosphatase 16, MKP7, MKP-7, KIAA1700, MAPK phosphatase-7, MGC129701, MGC129702

**Official Symbol:** DUSP16

**Accession Number(s):** NP\_085143.1

**Human GeneID(s):** [80824](#)

**Non-Human GeneID(s):** 70686 (mouse)

### Immunogen

Peptide with sequence AHEMIGTQIVTER-C, from the N Terminus of the protein sequence according to NP\_085143.1.

Please note the [peptide](#) is available for sale.

### Purification and Storage

Purified from goat serum by ammonium sulphate precipitation followed by antigen affinity chromatography using the immunizing peptide.

Supplied at 0.5 mg/ml in Tris saline, 0.02% sodium azide, pH7.3 with 0.5% bovine serum albumin.

Aliquot and store at -20°C. Minimize freezing and thawing.

### Applications Tested

**Peptide ELISA:** antibody detection limit dilution 1:32000.

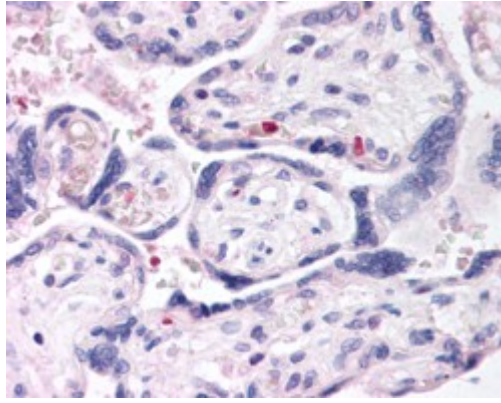
**Western blot:** Preliminary experiments gave no signal but low background in Human Brain and Jurkat lysates at up to 1µg/ml. We would appreciate any feedback from people in the field - have any results been reported with other antibodies/lysates?

**IHC:** In paraffin embedded Human Placenta shows individual cells in branch villi very close to the surrounding lacuna. Recommended concentration, 2-4µg/ml.

### Species Reactivity

**Tested:** Human

**Expected from sequence similarity:** Human, Mouse, Rat, Dog, Cow



EB05236 (2.5µg/ml) staining of paraffin embedded Human Placenta. Steamed antigen retrieval with citrate buffer pH 6, AP-staining.