

UK Office

Everest Biotech Ltd

Cherwell Innovation Centre
77 Heyford Park
Upper Heyford
Oxfordshire
OX25 5HD
UK

Enquiries:

info@everestbiotech.com

Sales:

sales@everestbiotech.com

Tech support:

support@everestbiotech.com

Tel: +44 (0)1869 238326

www.everestbiotech.com

**Research Use Only. Not for
diagnostic or therapeutic use.**

EB05197 - Goat Anti-DUSP1 Antibody

Size: 100µg specific antibody in 200µl



Target Protein

Principal Names: DUSP1, dual specificity phosphatase 1, HVH1, CL100, MKP-1, PTPN10, serine/threonine specific protein phosphatase, MKP1

Official Symbol: DUSP1

Accession Number(s): NP_004408.1

Human GeneID(s): [1843](#)

Non-Human GeneID(s): 19252 (mouse)

Immunogen

Peptide with sequence SYLQSPITTSPSC, from the C Terminus of the protein sequence according to NP_004408.1.

Please note the [peptide](#) is available for sale.

Purification and Storage

Purified from goat serum by ammonium sulphate precipitation followed by antigen affinity chromatography using the immunizing peptide.

Supplied at 0.5 mg/ml in Tris saline, 0.02% sodium azide, pH7.3 with 0.5% bovine serum albumin.

Aliquot and store at -20°C. Minimize freezing and thawing.

Applications Tested

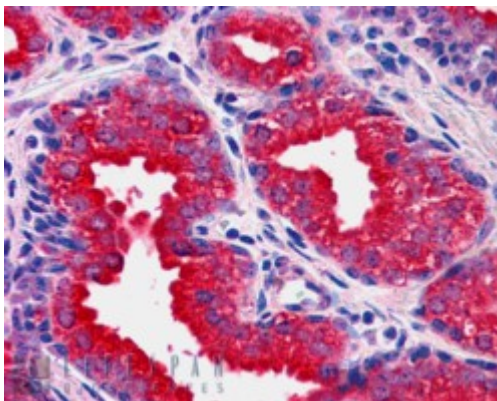
Peptide ELISA: antibody detection limit dilution 1:32000.

IHC: In paraffin embedded Human Prostate shows strong cytoplasm staining of secretory cells in the glands. Recommended concentration: 3-5µg/ml.

Species Reactivity

Tested: Human

Expected from sequence similarity: Human, Dog, Cow, Mouse, Rat



EB05197 (3.8µg/ml) staining of paraffin embedded Human Prostate. Steamed antigen retrieval with citrate buffer pH 6, AP-staining.