

## UK Office

### Everest Biotech Ltd

Cherwell Innovation Centre  
77 Heyford Park  
Upper Heyford  
Oxfordshire  
OX25 5HD  
UK

Enquiries:

[info@everestbiotech.com](mailto:info@everestbiotech.com)

Sales:

[sales@everestbiotech.com](mailto:sales@everestbiotech.com)

Tech support:

[support@everestbiotech.com](mailto:support@everestbiotech.com)

Tel: +44 (0)1869 238326

[www.everestbiotech.com](http://www.everestbiotech.com)

**Research Use Only. Not for  
diagnostic or therapeutic use.**

## EB09706 - Goat Anti-DTX3 Antibody

Size: 100µg specific antibody in 200µl



### Target Protein

**Principal Names:** DTX3, deltex 3 homolog (Drosophila), FLJ34766, MGC138863, MGC138864, RNF154, deltex 3 homolog

**Official Symbol:** DTX3

**Accession Number(s):** NP\_848597.1

**Human GeneID(s):** [196403](#)

**Non-Human GeneID(s):** 80904 (mouse), 500847 (rat)

### Immunogen

Peptide with sequence C-KNKVTVSKPVWD, from the internal region (near N Terminus) of the protein sequence according to NP\_848597.1.

Please note the [peptide](#) is available for sale.

### Purification and Storage

Purified from goat serum by ammonium sulphate precipitation followed by antigen affinity chromatography using the immunizing peptide.

Supplied at 0.5 mg/ml in Tris saline, 0.02% sodium azide, pH7.3 with 0.5% bovine serum albumin.

Aliquot and store at -20°C. Minimize freezing and thawing.

### Applications Tested

**Peptide ELISA:** antibody detection limit dilution 1:8000.

**Western blot:** Approx 90kDa band observed in Mouse Fetal Brain lysates and in lysates of cell line NIH3T3 (calculated MW of 38.0kDa according to Human NP\_848597.1 and 37.98kDa to Mouse NP\_109639.1). The observed much higher molecular weight corresponds to earlier findings in literature with different antibodies (Takeyama et al, J Biol Chem. 2003 Jun13;278(24):21930-7.; PMID: 12670957). Recommended concentration: 0.2-0.5µg/ml.

**IHC:** Paraffin embedded Human Brain (Cortex). Recommended concentration: 10µg/ml.

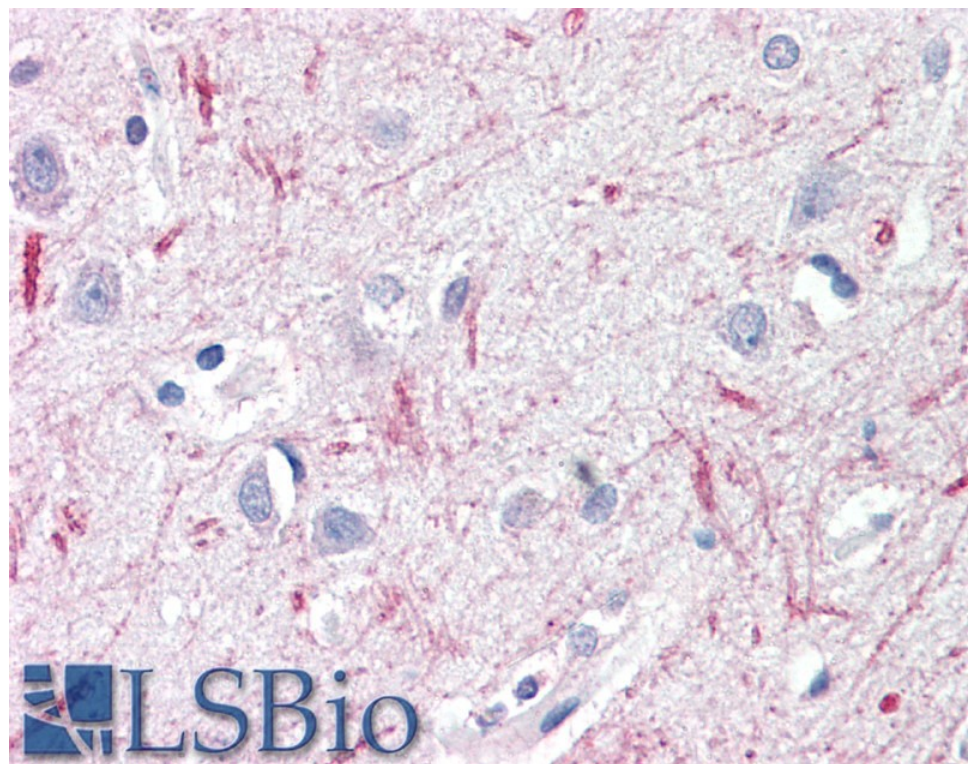
### Species Reactivity

**Tested:** Mouse, Human

**Expected from sequence similarity:** Human, Mouse, Rat, Cow



EB09706 (0.3 $\mu$ g/ml) staining of NIH3T3 lysate (35 $\mu$ g protein in RIPA buffer). Primary incubation was 1 hour.  
Detected by chemiluminescence.



EB09706 (10 $\mu$ g/ml) staining of paraffin embedded Human Cortex. Steamed antigen retrieval with citrate buffer pH 6, AP-staining.