

## UK Office

### Everest Biotech Ltd

Cherwell Innovation Centre  
77 Heyford Park  
Upper Heyford  
Oxfordshire  
OX25 5HD  
UK

Enquiries:

[info@everestbiotech.com](mailto:info@everestbiotech.com)

Sales:

[sales@everestbiotech.com](mailto:sales@everestbiotech.com)

Tech support:

[support@everestbiotech.com](mailto:support@everestbiotech.com)

Tel: +44 (0)1869 238326

[www.everestbiotech.com](http://www.everestbiotech.com)

**Research Use Only. Not for  
diagnostic or therapeutic use.**

## EB08943 - Goat Anti-Dpm1 (mouse) Antibody

Size: 100µg specific antibody in 200µl



### Target Protein

**Principal Names:** DPM1, dolichyl-phosphate mannosyltransferase polypeptide 1, catalytic subunit, RP23-391M18.1, AI118379, AI194292, OTTMUSP00000017164, dolichol monophosphate mannose synthase, dolichyl-phosphate mannosyltransferase polypeptide 1

**Official Symbol:** Dpm1

**Accession Number(s):** NP\_034202.1

**Non-Human GeneID(s):** 13480 (mouse), 296394 (rat)

### Immunogen

Peptide with sequence PQGRSSRQDKYS-C, from the N Terminus of the protein sequence according to NP\_034202.1.

Please note the [peptide](#) is available for sale.

### Purification and Storage

Purified from goat serum by ammonium sulphate precipitation followed by antigen affinity chromatography using the immunizing peptide.

Supplied at 0.5 mg/ml in Tris saline, 0.02% sodium azide, pH7.3 with 0.5% bovine serum albumin.

Aliquot and store at -20°C. Minimize freezing and thawing.

### Applications Tested

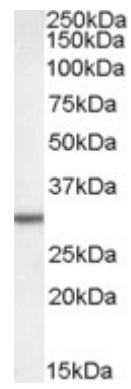
**Peptide ELISA:** antibody detection limit dilution 1:64000.

**Western blot:** Approx. 29kDa band observed in Rat Liver lysates (calculated MW of 29.2kDa according to Mouse NP\_034202.1 and to Rat NP\_001100014.1). Recommended concentration: 0.1-0.3µg/ml.

### Species Reactivity

**Tested:** Rat

**Expected from sequence similarity:** Mouse, Rat



EB08943 (0.05µg/ml) staining of Rat Liver lysate (35µg protein in RIPA buffer). Primary incubation was 1 hour.  
Detected by chemiluminescence.