

## UK Office

### Everest Biotech Ltd

Cherwell Innovation Centre  
77 Heyford Park  
Upper Heyford  
Oxfordshire  
OX25 5HD  
UK

Enquiries:

[info@everestbiotech.com](mailto:info@everestbiotech.com)

Sales:

[sales@everestbiotech.com](mailto:sales@everestbiotech.com)

Tech support:

[support@everestbiotech.com](mailto:support@everestbiotech.com)

Tel: +44 (0)1869 238326

[www.everestbiotech.com](http://www.everestbiotech.com)

**Research Use Only. Not for  
diagnostic or therapeutic use.**

## EB10781 - Goat Anti-Doublecortin / DCX (aa232-242) Antibody

Size: 100µg specific antibody in 200µl



### Target Protein

**Principal Names:** DCX, doublecortin, RP5-914P14.1, DBCN, DC, FLJ51296, LISX, SCLH, XLIS, OTTHUMP00000216316, doublecortex, doublin, lis-X, lissencephalin-X, neuronal migration protein doublecortin

**Official Symbol:** DCX

**Accession Number(s):** NP\_000546.2; NP\_835365.1; NP\_835364.1; NP\_001182482.1

**Human GeneID(s):** [1641](#)

**Non-Human GeneID(s):** 13193 (mouse), 84394 (rat)

**Important Comments:** This antibody is expected to recognize all four reported isoforms (NP\_000546.2; NP\_835365.1; NP\_835364.1; NP\_001182482.1). Reported variants represent identical protein: NP\_835364.1 and NP\_835366.1.

### Immunogen

Peptide with sequence C-KTSANMKAPQS, from the internal region of the protein sequence according to NP\_000546.2; NP\_835365.1; NP\_835364.1; NP\_001182482.1.

Please note the [peptide](#) is available for sale.

### Purification and Storage

Purified from goat serum by ammonium sulphate precipitation followed by antigen affinity chromatography using the immunizing peptide.

Supplied at 0.5 mg/ml in Tris saline, 0.02% sodium azide, pH7.3 with 0.5% bovine serum albumin.

Aliquot and store at -20°C. Minimize freezing and thawing.

### Applications Tested

**Peptide ELISA:** antibody detection limit dilution 1:32000.

**Western blot:** Approx 45kDa band observed in Mouse fetal Brain lysates (calculated MW of 49.3kDa according to Mouse NP\_001103692.1). Recommended concentration: 0.01-0.03µg/ml. Primary incubation 1 hour at room temperature.

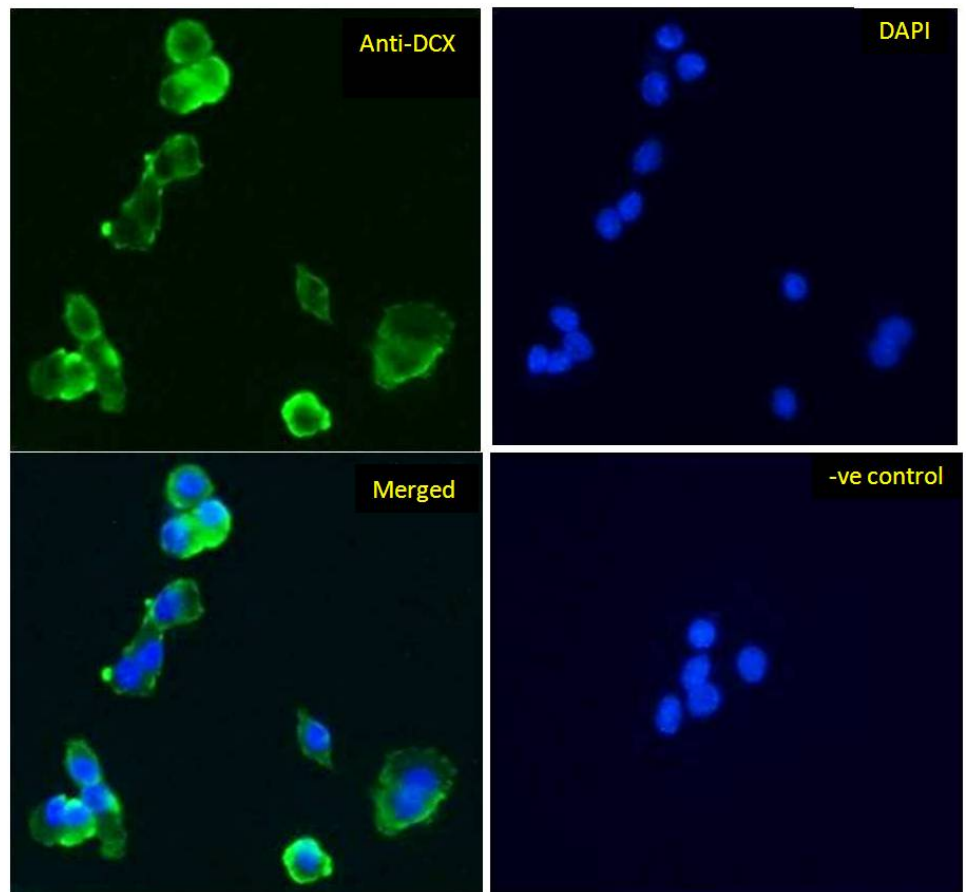
**IHC:** In paraffin embedded Human Cerebellum shows axonal and incidental nuclear staining. Recommended concentration: 2-4µg/ml.

**Immunofluorescence:** Strong expression of the protein seen in the cytoplasm of HepG2 cells. Recommended concentration: 5µg/ml.

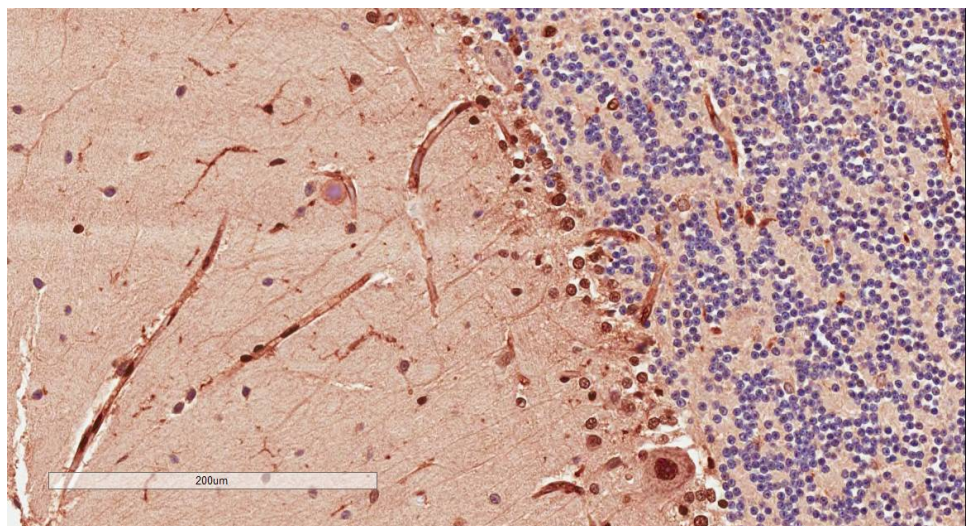
### Species Reactivity

**Tested:** Human, Mouse

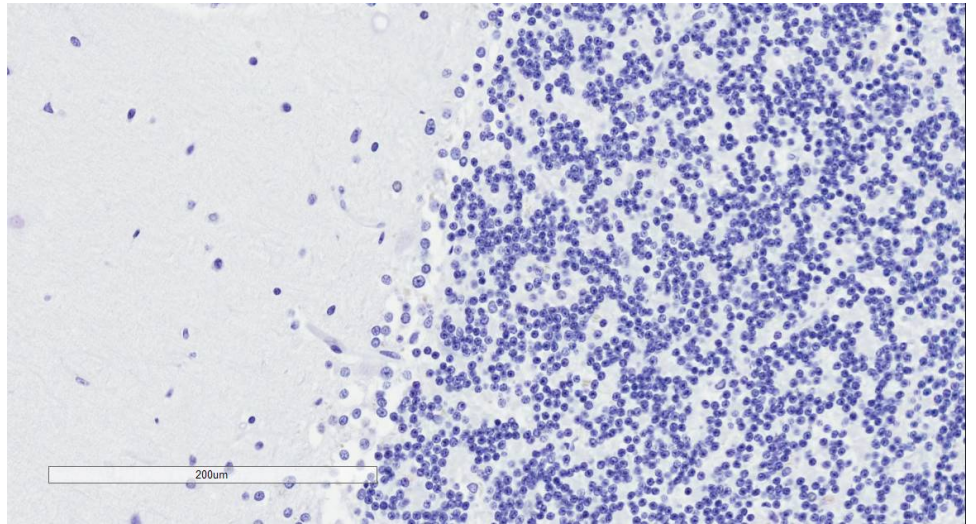
**Expected from sequence similarity:** Human, Mouse, Rat, Dog, Pig, Cow



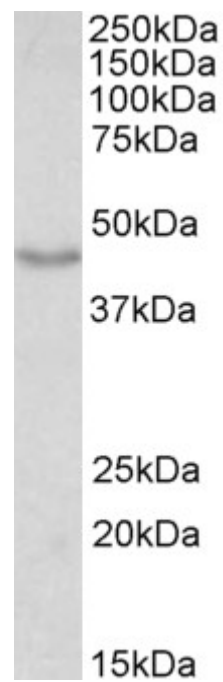
EB10781 Immunofluorescence analysis of paraformaldehyde fixed HepG2 cells, permeabilized with 0.15% Triton. Primary incubation 1hr (5ug/ml) followed by Alexa Fluor 488 secondary antibody (1ug/ml), showing cytoplasmic staining. The nuclear stain is DAPI (blue). Negative control: Unimmunized goat IgG (10ug/ml) followed by Alexa Fluor 488 secondary antibody (1ug/ml).



EB10781 (2µg/ml) staining of paraffin embedded Human Cerebellum. Microwaved antigen retrieval with citrate buffer pH 6, HRP-staining.



EB10781 Negative Control showing staining of paraffin embedded Human Cerebellum, with no primary antibody.



EB10781 (0.01µg/ml) staining of Mouse fetal Brain lysate (35µg protein in RIPA buffer). Detected by chemiluminescence.