

UK Office

Everest Biotech Ltd

Cherwell Innovation Centre
77 Heyford Park
Upper Heyford
Oxfordshire
OX25 5HD
UK

Enquiries:

info@everestbiotech.com

Sales:

sales@everestbiotech.com

Tech support:

support@everestbiotech.com

Tel: +44 (0)1869 238326

www.everestbiotech.com

**Research Use Only. Not for
diagnostic or therapeutic use.**

EB09408 - Goat Anti-DMRT2 Antibody

Size: 100µg specific antibody in 200µl



Target Protein

Principal Names: DMRT2, doublesex and mab-3 related transcription factor 2, OTTHUMP00000020964, OTTHUMP00000020965, OTTHUMP00000020966, OTTHUMP00000020967, terra-like protein

Official Symbol: DMRT2

Accession Number(s): NP_006548.1; NP_870987.2

Human GeneID(s): [10655](#)

Non-Human GeneID(s): 226049 (mouse), 309430 (rat)

Important Comments: This antibody is expected to recognize isoform 2 only (NP_870987.2). Reported variants NP_001124337.1 and NP_006548.1 represent identical protein

Immunogen

Peptide with sequence C-KRPSSAITRVSQ, from the C Terminus of the protein sequence according to NP_006548.1; NP_870987.2.

Please note the [peptide](#) is available for sale.

Purification and Storage

Purified from goat serum by ammonium sulphate precipitation followed by antigen affinity chromatography using the immunizing peptide.

Supplied at 0.5 mg/ml in Tris saline, 0.02% sodium azide, pH7.3 with 0.5% bovine serum albumin.

Aliquot and store at -20°C. Minimize freezing and thawing.

Applications Tested

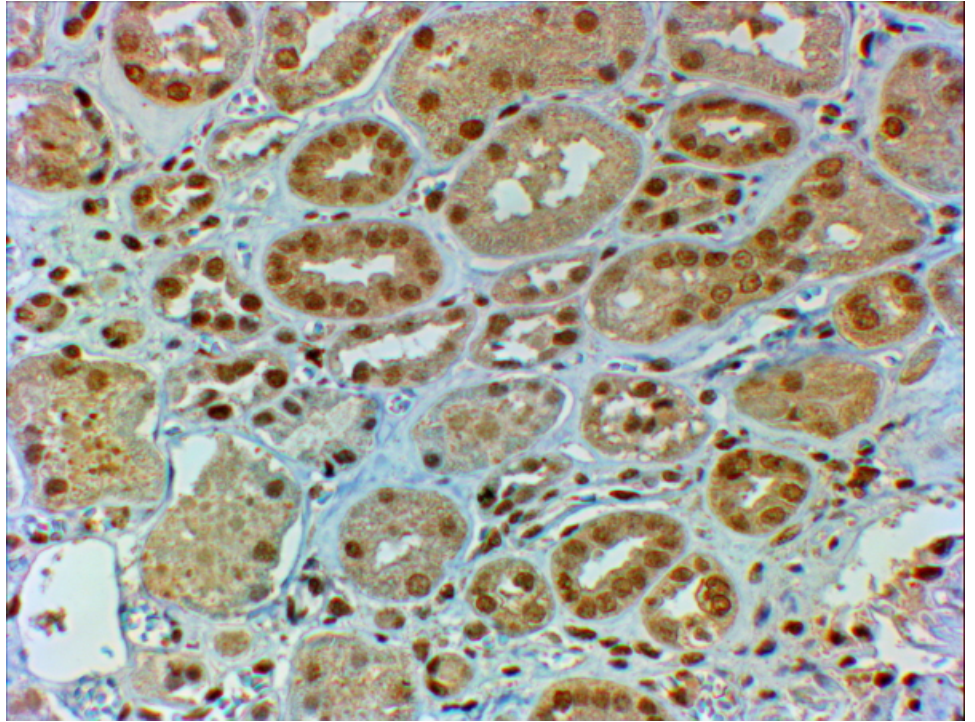
Peptide ELISA: antibody detection limit dilution 1:8000.

IHC: In paraffin embedded Human Kidney shows nuclear staining primarily in the DCT. Recommended concentration, 2-4µg/ml.

Species Reactivity

Tested: Human

Expected from sequence similarity: Human, Mouse, Rat, Cow



EB09408 (2 μ g/ml) staining of paraffin embedded Human Kidney. Steamed antigen retrieval with citrate buffer pH 6, HRP-staining.