

## UK Office

### Everest Biotech Ltd

Cherwell Innovation Centre  
77 Heyford Park  
Upper Heyford  
Oxfordshire  
OX25 5HD  
UK

Enquiries:

[info@everestbiotech.com](mailto:info@everestbiotech.com)

Sales:

[sales@everestbiotech.com](mailto:sales@everestbiotech.com)

Tech support:

[support@everestbiotech.com](mailto:support@everestbiotech.com)

Tel: +44 (0)1869 238326

[www.everestbiotech.com](http://www.everestbiotech.com)

**Research Use Only. Not for  
diagnostic or therapeutic use.**

## EB09461 - Goat Anti-Decorin Antibody

Size: 100µg specific antibody in 200µl



### Target Protein

**Principal Names:** DCN, decorin, CSCD, DSPG2, PG40, PGII, PGS2, SLRR1B, bone proteoglycan II, decorin proteoglycan, dermatan sulphate proteoglycans II, proteoglycan core protein, small leucine-rich protein 1B

**Official Symbol:** DCN

**Accession Number(s):** NP\_001911.1; NP\_598011.1; NP\_598012.1;

**Human GeneID(s):** [1634](#)

**Important Comments:** This antibody is expected to recognize the three reported isoforms a, b and c (NP\_001911.1; NP\_598011.1; NP\_598012.1 resp.). Reported variants NP\_598010.1 and NP\_001911.1 represent identical protein.

### Immunogen

Peptide with sequence C-KISRVDAASLKGLNN, from the internal region of the protein sequence according to NP\_001911.1; NP\_598011.1; NP\_598012.1;.

Please note the [peptide](#) is available for sale.

### Purification and Storage

Purified from goat serum by ammonium sulphate precipitation followed by antigen affinity chromatography using the immunizing peptide.

Supplied at 0.5 mg/ml in Tris saline, 0.02% sodium azide, pH7.3 with 0.5% bovine serum albumin.

Aliquot and store at -20°C. Minimize freezing and thawing.

### Applications Tested

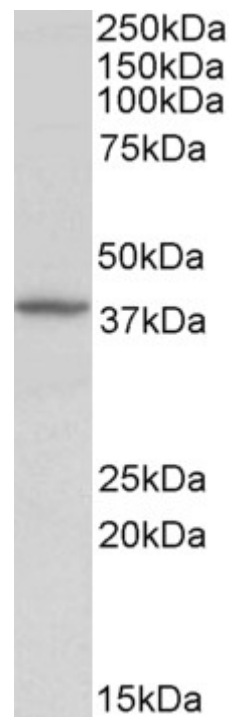
**Peptide ELISA:** antibody detection limit dilution 1:8000.

**Western blot:** Approx 38kDa band observed in Human Kidney lysates (calculated MW of 39.7kDa according to NP\_001911.1). Recommended concentration: 0.5-2µg/ml.

### Species Reactivity

**Tested:** Human

**Expected from sequence similarity:** Human, Cow, Pig, Cavia



EB09461 (0.5 $\mu$ g/ml) staining of Human Kidney lysate (35 $\mu$ g protein in RIPA buffer). Primary incubation was 1 hour. Detected by chemiluminescence.