

## UK Office

### Everest Biotech Ltd

Cherwell Innovation Centre  
77 Heyford Park  
Upper Heyford  
Oxfordshire  
OX25 5HD  
UK

Enquiries:

[info@everestbiotech.com](mailto:info@everestbiotech.com)

Sales:

[sales@everestbiotech.com](mailto:sales@everestbiotech.com)

Tech support:

[support@everestbiotech.com](mailto:support@everestbiotech.com)

Tel: +44 (0)1869 238326

[www.everestbiotech.com](http://www.everestbiotech.com)

**Research Use Only. Not for  
diagnostic or therapeutic use.**

## EB12413 - Goat Anti-DDX41 (aa468-480) Antibody

Size: 100µg specific antibody in 200µl



### Target Protein

**Principal Names:** DDX41, DEAD (Asp-Glu-Ala-Asp) box polypeptide 41, ABS, 2900024F02Rik, DEAD box protein 41, DEAD box protein abstract homolog, DEAD-box protein abstract, probable ATP-dependent RNA helicase DDX41, putative RNA helicase

**Official Symbol:** DDX41

**Accession Number(s):** NP\_057306.2

**Human GeneID(s):** [51428](#)

**Non-Human GeneID(s):** 72935 (mouse), 314336 (rat)

### Immunogen

Peptide with sequence C-QEERTKAIEAFRE, from the internal region of the protein sequence according to NP\_057306.2.

Please note the [peptide](#) is available for sale.

### Purification and Storage

Purified from goat serum by ammonium sulphate precipitation followed by antigen affinity chromatography using the immunizing peptide.

Supplied at 0.5 mg/ml in Tris saline, 0.02% sodium azide, pH7.3 with 0.5% bovine serum albumin.

Aliquot and store at -20°C. Minimize freezing and thawing.

### Applications Tested

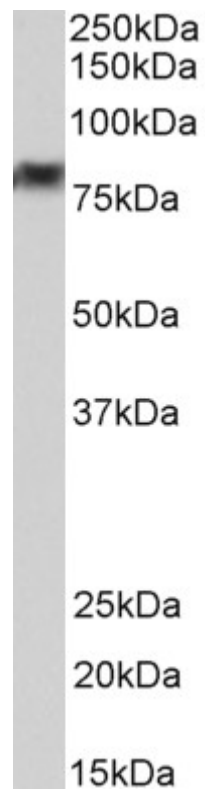
**Peptide ELISA:** antibody detection limit dilution 1:128000.

**Western blot:** Approx 85kDa band observed in Human Bone Marrow lysates (calculated MW of 69.8kDa according to NP\_057306.2). The observed molecular weight corresponds to earlier findings with different antibodies from other commercial sources. Recommended concentration: 0.5-2µg/ml.

### Species Reactivity

**Tested:** Human

**Expected from sequence similarity:** Human, Mouse, Rat, Dog, Cow



EB12413 (0.5 $\mu$ g/ml) staining of Bone Marrow lysate (35 $\mu$ g protein in RIPA buffer). Primary incubation was 1 hour. Detected by chemiluminescence.