

UK Office

Everest Biotech Ltd

Cherwell Innovation Centre
77 Heyford Park
Upper Heyford
Oxfordshire
OX25 5HD
UK

Enquiries:

info@everestbiotech.com

Sales:

sales@everestbiotech.com

Tech support:

support@everestbiotech.com

Tel: +44 (0)1869 238326

www.everestbiotech.com

**Research Use Only. Not for
diagnostic or therapeutic use.**

EB05278 - Goat Anti-DDAH1 Antibody

Size: 100µg specific antibody in 200µl



Target Protein

Principal Names: DDAH1, dimethylarginine dimethylaminohydrolase 1, DDAH, DDAH1, NG, NG-dimethylarginine dimethylaminohydrolase, RP4-621F18.1, FLJ21264, FLJ25539

Official Symbol: DDAH1

Accession Number(s): NP_036269.1; NP_001127917.1

Human GeneID(s): [23576](#)

Important Comments: This antibody is expected to recognize both reported isoforms (NP_036269.1 and NP_001127917.1).

Immunogen

Peptide with sequence TCCSVLINKKVDS, from the C Terminus of the protein sequence according to NP_036269.1; NP_001127917.1.

Please note the [peptide](#) is available for sale.

Purification and Storage

Purified from goat serum by ammonium sulphate precipitation followed by antigen affinity chromatography using the immunizing peptide.

Supplied at 0.5 mg/ml in Tris saline, 0.02% sodium azide, pH7.3 with 0.5% bovine serum albumin.

Aliquot and store at -20°C. Minimize freezing and thawing.

Applications Tested

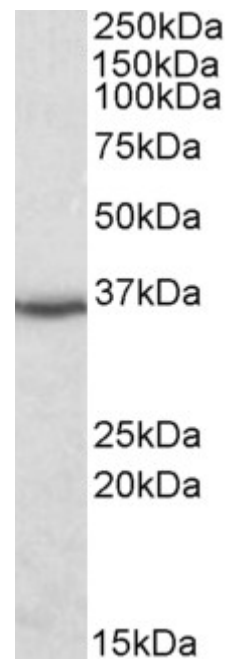
Peptide ELISA: antibody detection limit dilution 1:1000.

Western blot: Approx 35kDa band observed in Human Kidney, Human Brain (Cerebellum) and Pancreas lysates (calculated MW of 31.1kDa according to NP_036269.1). The observed molecular weight corresponds to earlier findings in literature with different antibodies (Pullamsetti et al, FASEB J. 2005 Jul;19(9):1175-7; PMID: 15827267). Recommended concentration: 0.1-0.3µg/ml. Primary incubation was 1 hour.

Species Reactivity

Tested: Human

Expected from sequence similarity: Human, Cow



EB05278 (0.1µg/ml) staining of Human Kidney lysate (35µg protein in RIPA buffer). Detected by chemiluminescence.