

## UK Office

### Everest Biotech Ltd

Cherwell Innovation Centre  
77 Heyford Park  
Upper Heyford  
Oxfordshire  
OX25 5HD  
UK

Enquiries:

[info@everestbiotech.com](mailto:info@everestbiotech.com)

Sales:

[sales@everestbiotech.com](mailto:sales@everestbiotech.com)

Tech support:

[support@everestbiotech.com](mailto:support@everestbiotech.com)

Tel: +44 (0)1869 238326

[www.everestbiotech.com](http://www.everestbiotech.com)

**Research Use Only. Not for  
diagnostic or therapeutic use.**

## EB09917 - Goat Anti-DCUN1D1 Antibody

Size: 100µg specific antibody in 200µl



### Target Protein

**Principal Names:** DCN1, defective in cullin neddylation 1, domain containing 1 (S. cerevisiae), DCUN1L1, RP42, RP42 homolog, SCCRO, SCRO, squamous cell carcinoma-related oncogene, Tes3, DCUN1D1

**Official Symbol:** DCUN1D1

**Accession Number(s):** NP\_065691.2

**Human GeneID(s):** [54165](#)

**Non-Human GeneID(s):** 114893 (mouse)

### Immunogen

Peptide with sequence C-RPQIAGTKSTT, from the C Terminus of the protein sequence according to NP\_065691.2.

Please note the [peptide](#) is available for sale.

### Purification and Storage

Purified from goat serum by ammonium sulphate precipitation followed by antigen affinity chromatography using the immunizing peptide.

Supplied at 0.5 mg/ml in Tris saline, 0.02% sodium azide, pH7.3 with 0.5% bovine serum albumin.

Aliquot and store at -20°C. Minimize freezing and thawing.

### Applications Tested

**Peptide ELISA:** antibody detection limit dilution 1:16000.

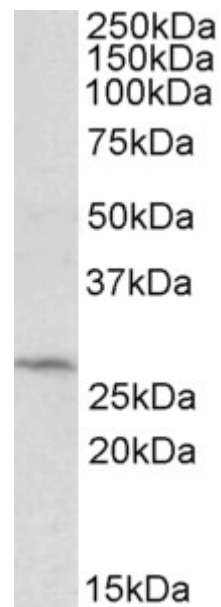
**Western blot:** Approx 28kDa band observed in HepG2 lysates (calculated MW of 30.1kDa according to NP\_065691.2). Recommended concentration: 0.3-1µg/ml.

**IHC:** In paraffin embedded Human Kidney shows pixulated staining in the cytoplasm of epithelial cells of PCT, but heavy cytoplasm staining in the epithelial cells of the DCT. Recommended concentration, 5-10µg/ml.

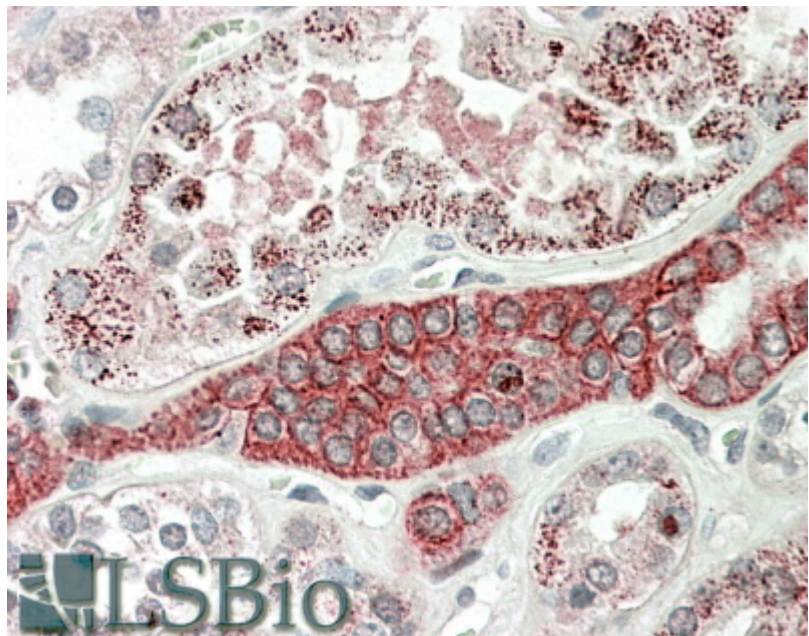
### Species Reactivity

**Tested:** Human

**Expected from sequence similarity:** Human, Mouse, Cow



EB09917 (0.5µg/ml) staining of HepG2 lysate (35µg protein in RIPA buffer). Primary incubation was 1 hour.  
Detected by chemiluminescence.



EB09917 (5µg/ml) staining of paraffin embedded Human Kidney. Steamed antigen retrieval with citrate buffer pH 6, AP-staining.