

## UK Office

### Everest Biotech Ltd

Cherwell Innovation Centre  
77 Heyford Park  
Upper Heyford  
Oxfordshire  
OX25 5HD  
UK

Enquiries:

[info@everestbiotech.com](mailto:info@everestbiotech.com)

Sales:

[sales@everestbiotech.com](mailto:sales@everestbiotech.com)

Tech support:

[support@everestbiotech.com](mailto:support@everestbiotech.com)

Tel: +44 (0)1869 238326

[www.everestbiotech.com](http://www.everestbiotech.com)

**Research Use Only. Not for  
diagnostic or therapeutic use.**

## EB10446 - Goat Anti-DCTN3 Antibody

Size: 100µg specific antibody in 200µl



### Target Protein

**Principal Names:** DCTN22, DCTN-22, dynactin 3, dynactin 3 (p22), dynactin 3, isoform 1, dynactin light chain, MGC111190, DCTN3

**Official Symbol:** DCTN3

**Accession Number(s):** NP\_009165.1; NP\_077324.1

**Human GeneID(s):** [11258](#)

**Non-Human GeneID(s):** 53598 (mouse), 362504 (rat)

**Important Comments:** This antibody is expected to recognize both reported isoforms (NP\_009165.1; NP\_077324.1).

### Immunogen

Peptide with sequence C-QVALGNISSKRE, from the internal region of the protein sequence according to NP\_009165.1; NP\_077324.1.

Please note the [peptide](#) is available for sale.

### Purification and Storage

Purified from goat serum by ammonium sulphate precipitation followed by antigen affinity chromatography using the immunizing peptide.

Supplied at 0.5 mg/ml in Tris saline, 0.02% sodium azide, pH7.3 with 0.5% bovine serum albumin.

Aliquot and store at -20°C. Minimize freezing and thawing.

### Applications Tested

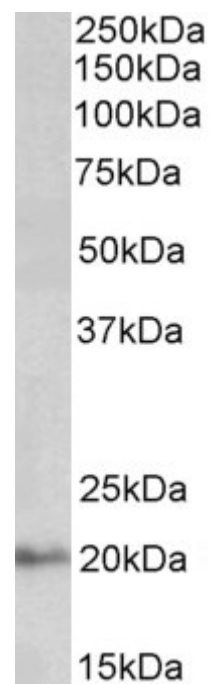
**Peptide ELISA:** antibody detection limit dilution 1:16000.

**Western blot:** Approx 20kDa band observed in Human Kidney, Skeletal Muscle and Pancreas lysates (calculated MW of 19.5kDa according to NP\_077324.1). In addition, a 25kDa band is observed in both Mouse and Rat Skeletal Muscle lysates accompanied by an 18kDa band in Mouse Skeletal Muscle. In Mouse the protein is known as p24. The 18kDa band could represent a smaller isoform. Recommended concentration: 0.03-0.1µg/ml.

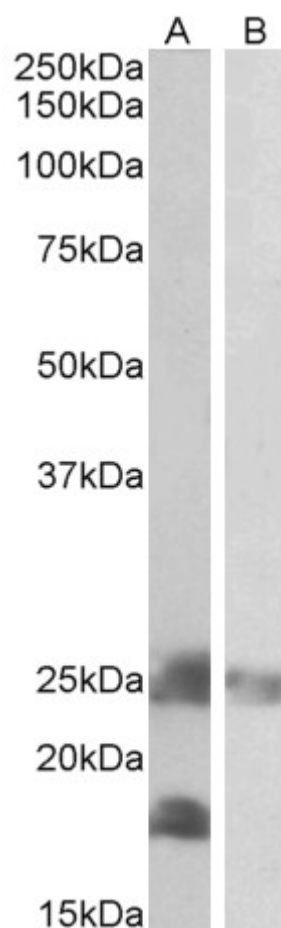
### Species Reactivity

**Tested:** Human, Mouse, Rat

**Expected from sequence similarity:** Human, Mouse, Rat, Dog, Cow



EB10446 (0.03 $\mu$ g/ml) staining of Human Kidney lysate (35 $\mu$ g protein in RIPA buffer). Primary incubation was 1 hour. Detected by chemiluminescence.



EB10446 (0.2 $\mu$ g/ml) staining of Mouse (A) and Rat (B) Skeletal Muscle lysates (35 $\mu$ g protein in RIPA buffer). Primary incubation was 1 hour. Detected by chemiluminescence.