

UK Office

Everest Biotech Ltd

Cherwell Innovation Centre
77 Heyford Park
Upper Heyford
Oxfordshire
OX25 5HD
UK

Enquiries:

info@everestbiotech.com

Sales:

sales@everestbiotech.com

Tech support:

support@everestbiotech.com

Tel: +44 (0)1869 238326

www.everestbiotech.com

**Research Use Only. Not for
diagnostic or therapeutic use.**

EB07463 - Goat Anti-Dcdc2a Antibody

Size: 100µg specific antibody in 200µl



Target Protein

Principal Names: Dcdc2a, doublecortin domain containing 2a, Dcdc2, MGC54817, RU2, doublecortin domain containing 2

Official Symbol: Dcdc2a

Accession Number(s): NP_808245.1

Human GeneID(s): [51473](#)

Non-Human GeneID(s): 195208 (mouse), 291130 (rat)

Immunogen

Peptide with sequence C-PQPLKRKGKKDSN, from the internal region of the protein sequence according to NP_808245.1.

Please note the [peptide](#) is available for sale.

Purification and Storage

Purified from goat serum by ammonium sulphate precipitation followed by antigen affinity chromatography using the immunizing peptide.

Supplied at 0.5 mg/ml in Tris saline, 0.02% sodium azide, pH7.3 with 0.5% bovine serum albumin.

Aliquot and store at -20°C. Minimize freezing and thawing.

Applications Tested

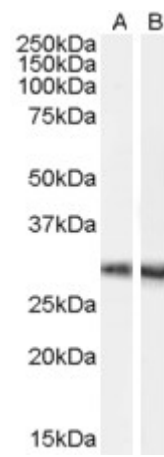
Peptide ELISA: antibody detection limit dilution 1:32000.

Western blot: Approx 28kDa band observed in mouse brain lysates (calculated MW of 41.3kDa according to NP_808245.1). The observed molecular weight corresponds to findings with EB07059, a product of different design reacting to a different part of the Human protein. Recommended concentration: 1-3µg/ml.

Species Reactivity

Tested: Mouse

Expected from sequence similarity: Human, Mouse, Rat



Staining of mouse brain lysate (35µg protein in RIPA buffer) with A) EB07463 (0.1µg/ml) and B) EB07059. Primary incubation was 1 hour. Detected by chemiluminescence.