

UK Office

Everest Biotech Ltd
Cherwell Innovation Centre
77 Heyford Park
Upper Heyford
Oxfordshire
OX25 5HD
UK

Enquiries:

info@everestbiotech.com

Sales:

sales@everestbiotech.com

Tech support:

support@everestbiotech.com

Tel: +44 (0)1869 238326

www.everestbiotech.com

**Research Use Only. Not for
diagnostic or therapeutic use.**

EB09697 - Goat Anti-DAPP1 / BAM32 Antibody

Size: 100µg specific antibody in 200µl



Target Protein

Principal Names: DAPP1, dual adaptor of phosphotyrosine and 3-phosphoinositides, BAM32, DKFZp667E0716

Official Symbol: DAPP1

Accession Number(s): NP_055210.2

Human GeneID(s): [27071](#)

Immunogen

Peptide with sequence C-KLSQIRKQLNQGE, from the internal region (near C Terminus) of the protein sequence according to NP_055210.2.

Please note the [peptide](#) is available for sale.

Purification and Storage

Purified from goat serum by ammonium sulphate precipitation followed by antigen affinity chromatography using the immunizing peptide.

Supplied at 0.5 mg/ml in Tris saline, 0.02% sodium azide, pH7.3 with 0.5% bovine serum albumin.

Aliquot and store at -20°C. Minimize freezing and thawing.

Applications Tested

Peptide ELISA: antibody detection limit dilution 1:8000.

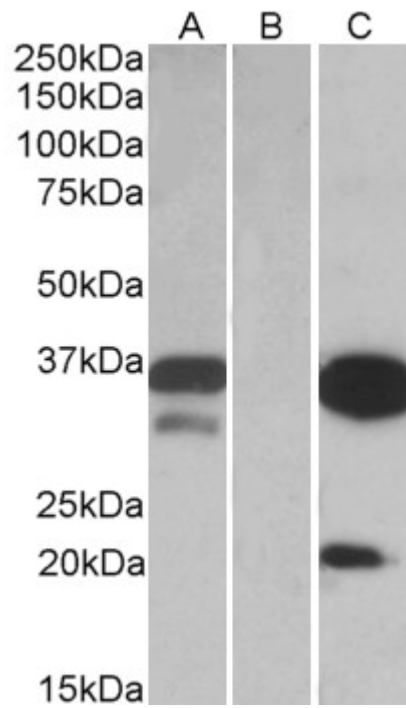
Western blot: In transfected HEK293 transiently expressing full-length Human DAPP1 (myc and DYKDDDDK tagged), a band of approx. 35kDa was observed. No bands were observed in mock-transfected HEK293 and the same band was observed using anti-DYKDDDDK tag antibody. Recommended concentration, 0.1- 0.3µg/ml.

Purchase the +ve control! The transfected lysate used to QC this product is available for sale. Please email sales@everestbiotech.com to request datasheet, pricing and delivery information.

Species Reactivity

Tested: Human

Expected from sequence similarity: Human, Dog, Cow



HEK293 lysate (10ug protein in RIPA buffer) over expressing Human DAPP1 with DYKDDDDK tag probed with EB09697 (0.1ug/ml) in Lane A and probed with anti- DYKDDDDK Tag (1/3000) in lane C. Mock-transfected HEK293 probed with EB09697 (1mg/ml) in Lane B. Primary incubations were for 1 hour. Detected by chemiluminescence.