

## UK Office

### Everest Biotech Ltd

Cherwell Innovation Centre  
77 Heyford Park  
Upper Heyford  
Oxfordshire  
OX25 5HD  
UK

Enquiries:

[info@everestbiotech.com](mailto:info@everestbiotech.com)

Sales:

[sales@everestbiotech.com](mailto:sales@everestbiotech.com)

Tech support:

[support@everestbiotech.com](mailto:support@everestbiotech.com)

Tel: +44 (0)1869 238326

[www.everestbiotech.com](http://www.everestbiotech.com)

**Research Use Only. Not for  
diagnostic or therapeutic use.**

## EB07719 - Goat Anti-Cyld (mouse) Antibody

Size: 100µg specific antibody in 200µl



### Target Protein

**Principal Names:** CYLD, cylindromatosis (turban tumor syndrome), 2010013M14Rik, 2900009M21Rik, C130039D01Rik, CDMT, CYLD1, EAC, mKIAA0849, ubiquitin carboxyl-terminal hydrolase CYLD

**Official Symbol:** Cyld

**Accession Number(s):** NP\_775545.1

**Non-Human GeneID(s):** 74256 (mouse), 312937 (rat)

### Immunogen

Peptide with sequence C-DSQQSKSKNPWYIDE, from the internal region of the protein sequence according to NP\_775545.1.

Please note the [peptide](#) is available for sale.

### Purification and Storage

Purified from goat serum by ammonium sulphate precipitation followed by antigen affinity chromatography using the immunizing peptide.

Supplied at 0.5 mg/ml in Tris saline, 0.02% sodium azide, pH7.3 with 0.5% bovine serum albumin.

Aliquot and store at -20°C. Minimize freezing and thawing.

### Applications Tested

**Peptide ELISA:** antibody detection limit dilution 1:32000.

**Western blot:** Approx 125kDa band observed in Rat Brain lysates (calculated MW of 107kDa according to mouse NP\_775545.1). Recommended concentration: 0.5-1.5µg/ml.

**IHC:** Paraffin embedded Mouse Brain. Recommended concentration: 5µg/ml.

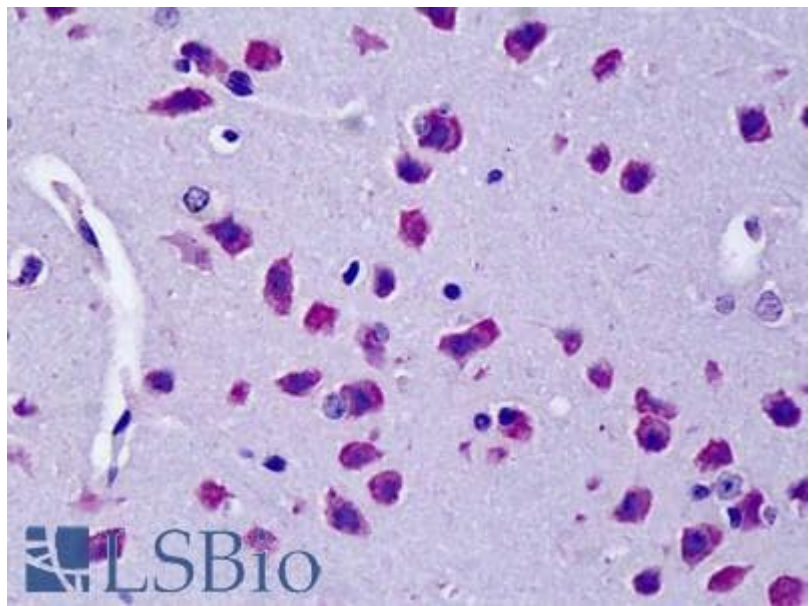
### Species Reactivity

**Tested:** Rat, Mouse

**Expected from sequence similarity:** Mouse, Rat



EB07719 (0.5 $\mu$ g/ml) staining of Rat Brain lysate (35 $\mu$ g protein in RIPA buffer). Primary incubation was 1 hour.  
Detected by chemiluminescence.



EB07719 (5 $\mu$ g/ml) staining of paraffin embedded Mouse Brain. Steamed antigen retrieval with citrate buffer pH 6,  
AP-staining.