

## UK Office

### Everest Biotech Ltd

Cherwell Innovation Centre  
77 Heyford Park  
Upper Heyford  
Oxfordshire  
OX25 5HD  
UK

Enquiries:

[info@everestbiotech.com](mailto:info@everestbiotech.com)

Sales:

[sales@everestbiotech.com](mailto:sales@everestbiotech.com)

Tech support:

[support@everestbiotech.com](mailto:support@everestbiotech.com)

Tel: +44 (0)1869 238326

[www.everestbiotech.com](http://www.everestbiotech.com)

**Research Use Only. Not for  
diagnostic or therapeutic use.**

## EB12230 - Goat Anti-CutA protein Antibody

Size: 100µg specific antibody in 200µl



### Target Protein

**Principal Names:** CUTA, cutA divalent cation tolerance homolog (E. coli), ACHAP, C6orf82, acetylcholinesterase-associated protein, brain acetylcholinesterase putative membrane anchor, divalent cation tolerant protein CUTA, protein CutA

**Official Symbol:** CUTA

**Accession Number(s):** NP\_001014433.1; NP\_057005.1; NP\_001014840.1

**Human GeneID(s):** [51596](#)

**Important Comments:** This antibody is expected to recognize all reported isoforms (NP\_001014433.1; NP\_057005.1; NP\_001014840.1). Reported variants represent identical protein: NP\_001014837.1, NP\_001014838.1, NP\_057005.1.

### Immunogen

Peptide with sequence C-QVTESVSDSIT, from the C Terminus of the protein sequence according to NP\_001014433.1; NP\_057005.1; NP\_001014840.1.

Please note the [peptide](#) is available for sale.

### Purification and Storage

Purified from goat serum by ammonium sulphate precipitation followed by antigen affinity chromatography using the immunizing peptide.

Supplied at 0.5 mg/ml in Tris saline, 0.02% sodium azide, pH7.3 with 0.5% bovine serum albumin.

Aliquot and store at -20°C. Minimize freezing and thawing.

### Applications Tested

**Peptide ELISA:** antibody detection limit dilution 1:64000.

**Western blot:** Approx 16kDa band observed in lysates of cell line Kelly (calculated MW of 16.8kDa according to NP\_057005.1). Recommended concentration: 1-3µg/ml. Primary incubation was 1 hour.

**IHC:** Paraffin embedded Human Prostate. Recommended concentration: 5µg/ml.

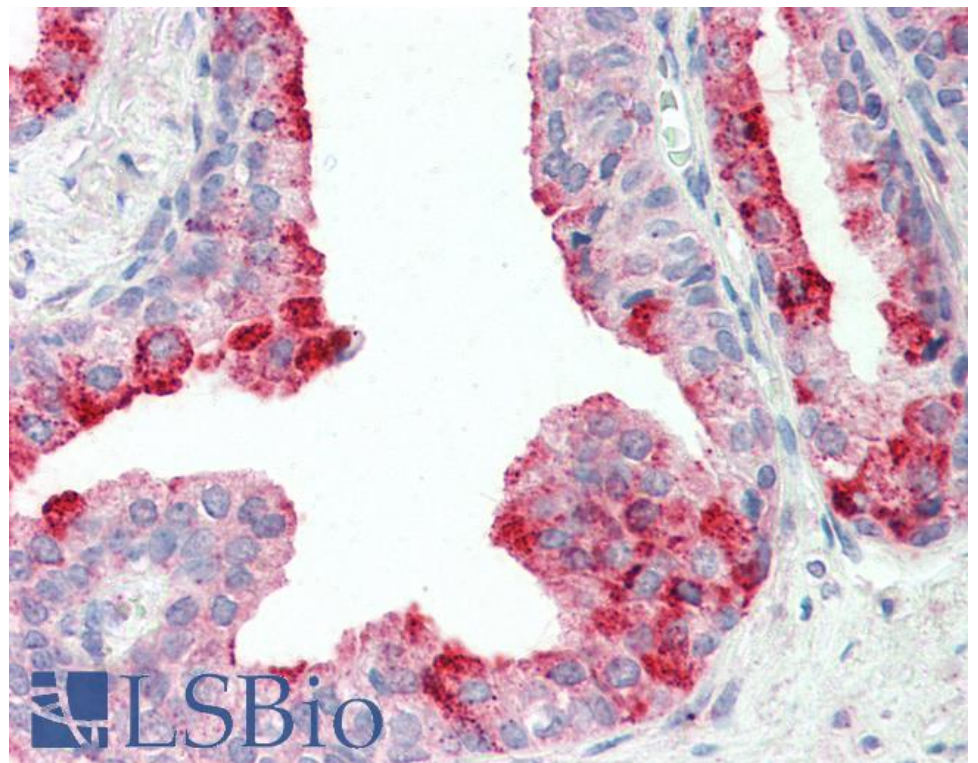
### Species Reactivity

**Tested:** Human

**Expected from sequence similarity:** Human



EB12230 (1µg/ml) staining of Kelly lysate (35µg protein in RIPA buffer). Detected by chemiluminescence.



EB12230 (5µg/ml) staining of paraffin embedded Human Prostate. Steamed antigen retrieval with citrate buffer pH 6, AP-staining.