

## UK Office

### Everest Biotech Ltd

Cherwell Innovation Centre  
77 Heyford Park  
Upper Heyford  
Oxfordshire  
OX25 5HD  
UK

Enquiries:

[info@everestbiotech.com](mailto:info@everestbiotech.com)

Sales:

[sales@everestbiotech.com](mailto:sales@everestbiotech.com)

Tech support:

[support@everestbiotech.com](mailto:support@everestbiotech.com)

Tel: +44 (0)1869 238326

[www.everestbiotech.com](http://www.everestbiotech.com)

**Research Use Only. Not for  
diagnostic or therapeutic use.**

## EB06849-B - Goat Anti-CTDSP1, Biotinylated Antibody

Size: 100µg specific antibody in 200µl



### Target Protein

**Principal Names:** CTDSP1, CTD small phosphatase 1, NIF3, NLI-IF, NLIIF, SCP1, CTD (carboxy-terminal domain, RNA polymerase II, polypeptide A) small phosphatase 1, NLI-interacting factor 3, nuclear LIM interactor-interacting factor 3, small C-terminal domain phosphatase 1

**Official Symbol:** CTDSP1

**Accession Number(s):** NP\_067021.1; NP\_872580.1; NP\_001193807.1

**Human GeneID(s):** [58190](#)

**Non-Human GeneID(s):** 227292 (mouse), 363249 (rat)

**Important Comments:** This antibody is expected to recognize all three reported isoforms (NP\_067021.1; NP\_872580.1; NP\_001193807.1).

### Immunogen

Peptide with sequence EAKAQDSDKIC., from the internal region of the protein sequence according to NP\_067021.1; NP\_872580.1; NP\_001193807.1.

Please note the [peptide](#) is available for sale.

### Purification and Storage

Purified from goat serum by ammonium sulphate precipitation followed by antigen affinity chromatography using the immunizing peptide.

Supplied at 0.5 mg/ml in Tris saline, 0.02% sodium azide, pH7.3 with 0.5% bovine serum albumin.

Aliquot and store at -20°C. Minimize freezing and thawing.

### Applications Tested

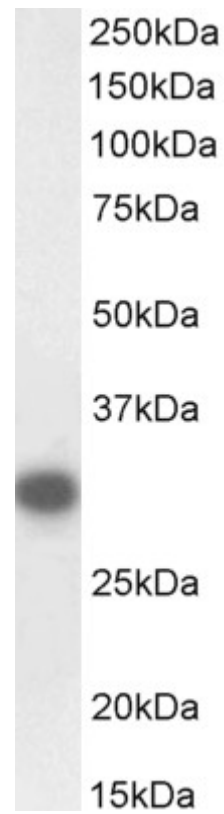
**Peptide ELISA:** antibody detection limit dilution 1:16000.

**Western blot:** Approx 30kDa band observed in Mouse Testis lysates (calculated MW of 29.3kDa according to Mouse NP\_694728.1). See non-biotinylated parental product's datasheet for further QC data. Recommended concentration: 0.1-0.3µg/ml.

### Species Reactivity

**Tested:** Human, Mouse

**Expected from sequence similarity:** Human, Mouse, Rat, Dog, Cow



Biotinylated EB06849 (0.1 $\mu$ g/ml) staining of Mouse Testis lysate (35 $\mu$ g protein in RIPA buffer), exactly mirroring its parental non-biotinylated product. Primary incubation was 1 hour. Detected by chemiluminescence, using streptavidin-HRP and using NAP blocker as a substitute for skimmed milk.