

UK Office

Everest Biotech Ltd

Cherwell Innovation Centre
77 Heyford Park
Upper Heyford
Oxfordshire
OX25 5HD
UK

Enquiries:

info@everestbiotech.com

Sales:

sales@everestbiotech.com

Tech support:

support@everestbiotech.com

Tel: +44 (0)1869 238326

www.everestbiotech.com

**Research Use Only. Not for
diagnostic or therapeutic use.**

EB05861 - Goat Anti-CSB / ERCC6 Antibody

Size: 100µg specific antibody in 200µl



Target Protein

Principal Names: ERCC6, excision repair cross-complementing rodent repair deficiency, complementation group 6, ARMD5, CKN2, COFS, COFS1, CSB, RAD26, ATP-dependent helicase ERCC6, Cockayne syndrome B protein, Cockayne syndrome group B protein, DNA excision repair protein ERCC-6, OTTHUMP00000019581, Rad26 homolog, cockayne syndrome protein CSB

Official Symbol: ERCC6

Accession Number(s): NP_000115.1

Human GeneID(s): [2074](#)

Non-Human GeneID(s): 319955 (mouse), 306274 (rat)

Immunogen

Peptide with sequence SGGEGIWKLKPEYC, from the C Terminus of the protein sequence according to NP_000115.1.

Please note the [peptide](#) is available for sale.

Purification and Storage

Purified from goat serum by ammonium sulphate precipitation followed by antigen affinity chromatography using the immunizing peptide.

Supplied at 0.5 mg/ml in Tris saline, 0.02% sodium azide, pH7.3 with 0.5% bovine serum albumin.

Aliquot and store at -20°C. Minimize freezing and thawing.

Applications Tested

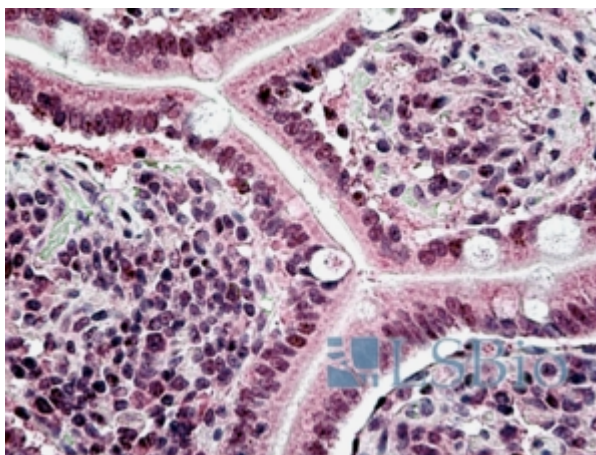
Peptide ELISA: antibody detection limit dilution 1:32000.

IHC: In paraffin embedded Human Small Intestine shows nuclear staining. Recommended concentration, 3-6µg/ml.

Species Reactivity

Tested: Human

Expected from sequence similarity: Human, Mouse, Rat, Dog, Pig, Cow



EB05861 (3.8µg/ml) staining of paraffin embedded Human Small Intestine. Steamed antigen retrieval with citrate buffer pH 6, AP-staining.