

UK Office

Everest Biotech Ltd

Cherwell Innovation Centre
77 Heyford Park
Upper Heyford
Oxfordshire
OX25 5HD
UK

Enquiries:

info@everestbiotech.com

Sales:

sales@everestbiotech.com

Tech support:

support@everestbiotech.com

Tel: +44 (0)1869 238326

www.everestbiotech.com

**Research Use Only. Not for
diagnostic or therapeutic use.**

EB10901 - Goat Anti-CRTC2 (aa542-553) Antibody

Size: 100µg specific antibody in 200µl



Target Protein

Principal Names: CRTC2, CREB regulated transcription coactivator 2, TORC2, CREB-regulated transcription coactivator 2, OTTHUMP00000035255, TORC-2, transducer of CREB protein 2, transducer of regulated cAMP response element-binding protein (CREB) 2, transducer of regulated

Official Symbol: CRTC2

Accession Number(s): NP_859066.1

Human GeneID(s): [200186](#)

Immunogen

Peptide with sequence C-HGQQSYHRPMSD, from the internal region of the protein sequence according to NP_859066.1.

Please note the [peptide](#) is available for sale.

Purification and Storage

Purified from goat serum by ammonium sulphate precipitation followed by antigen affinity chromatography using the immunizing peptide.

Supplied at 0.5 mg/ml in Tris saline, 0.02% sodium azide, pH7.3 with 0.5% bovine serum albumin.

Aliquot and store at -20°C. Minimize freezing and thawing.

Applications Tested

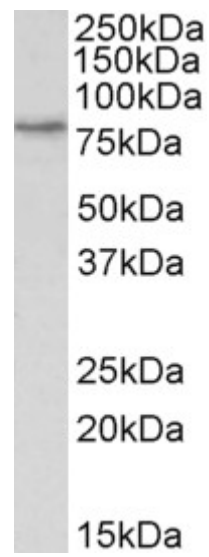
Peptide ELISA: antibody detection limit dilution 1:64000.

Western blot: Approx 75 to 80kDa band observed in lysates of cell line HeLa (calculated MW of 73.3kDa according to NP_859066.1). Recommended concentration: 1-3µg/ml.

Species Reactivity

Tested: Human

Expected from sequence similarity: Human, Pig, Cow



EB10901 (1 μ g/ml) staining of HeLa lysate (35 μ g protein in RIPA buffer). Primary incubation was 1 hour.
Detected by chemiluminescence.