

## UK Office

### Everest Biotech Ltd

Cherwell Innovation Centre  
77 Heyford Park  
Upper Heyford  
Oxfordshire  
OX25 5HD  
UK

Enquiries:

[info@everestbiotech.com](mailto:info@everestbiotech.com)

Sales:

[sales@everestbiotech.com](mailto:sales@everestbiotech.com)

Tech support:

[support@everestbiotech.com](mailto:support@everestbiotech.com)

Tel: +44 (0)1869 238326

[www.everestbiotech.com](http://www.everestbiotech.com)

**Research Use Only. Not for  
diagnostic or therapeutic use.**

## EB07419 - Goat Anti-CPT1A Antibody

Size: 100µg specific antibody in 200µl



### Target Protein

**Principal Names:** CPT1A, carnitine palmitoyltransferase 1A (liver), CPT1, CPT1-L, L-CPT1, carnitine palmitoyltransferase 1A, carnitine palmitoyltransferase I, carnitine palmitoyltransferase I, liver

**Official Symbol:** CPT1A

**Accession Number(s):** NP\_001867.2; NP\_001027017.1

**Human GeneID(s):** [1374](#)

**Important Comments:** This antibody is expected to recognize both reported isoforms (NP\_001867.2; NP\_001027017.1) but is not expected to recognise CPT1B.

### Immunogen

Peptide with sequence C-DPAQTVEQRLKLFK, from the internal region of the protein sequence according to NP\_001867.2; NP\_001027017.1.

Please note the [peptide](#) is available for sale.

### Purification and Storage

Purified from goat serum by ammonium sulphate precipitation followed by antigen affinity chromatography using the immunizing peptide.

Supplied at 0.5 mg/ml in Tris saline, 0.02% sodium azide, pH7.3 with 0.5% bovine serum albumin.

Aliquot and store at -20°C. Minimize freezing and thawing.

### Applications Tested

**Peptide ELISA:** antibody detection limit dilution 1:128000.

**Western blot:** Approx 80kDa band observed in Human Liver lysates (calculated MW of 86.2kDa according to NP\_001027017.1). Recommended concentration: 0.1-0.3µg/ml.

**IHC:** In paraffin embedded Human Kidney shows mitochondrial staining in PCT.

Recommended concentration: 4-6µg/ml. Paraffin embedded Human Heart.

Recommended concentration: 4µg/ml.

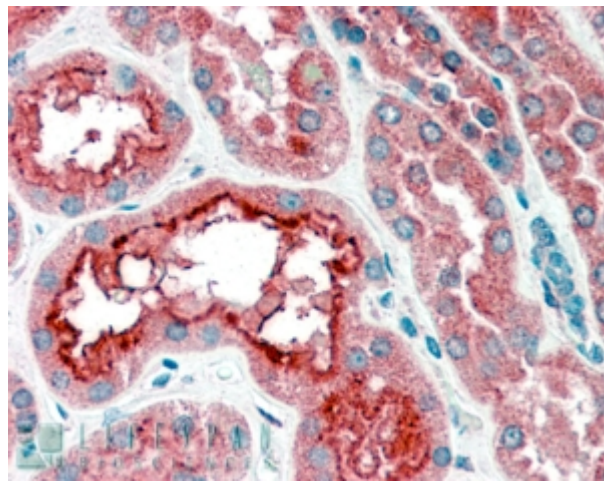
### Species Reactivity

**Tested:** Human

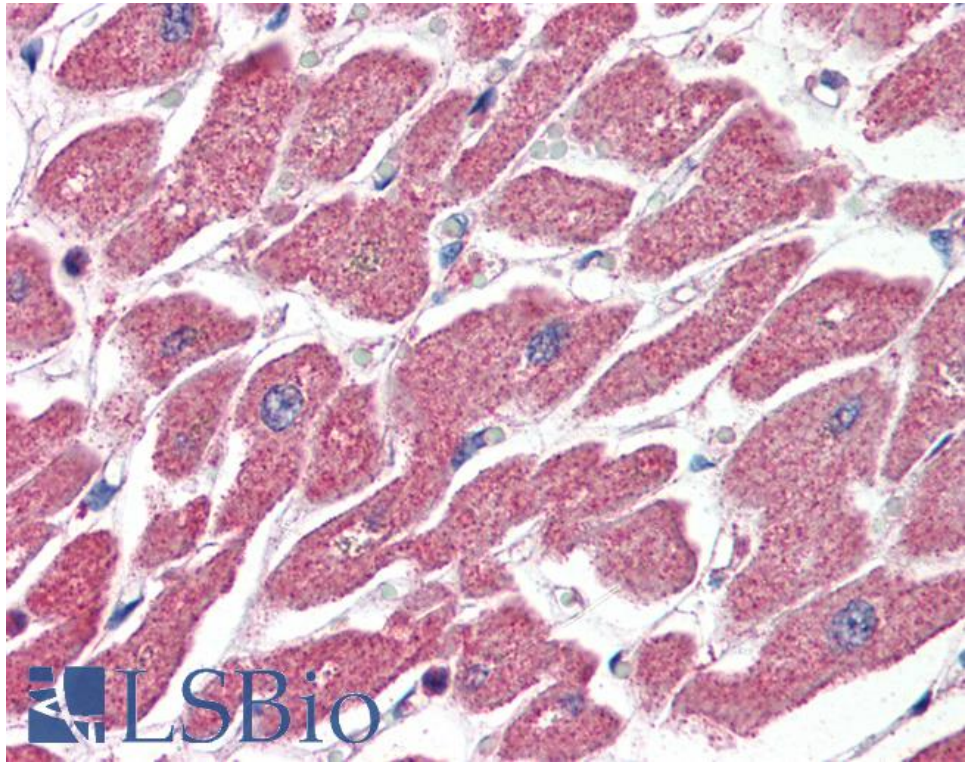
**Expected from sequence similarity:** Human



EB07419 (0.1µg/ml) staining of Human Liver lysate (35µg protein in RIPA buffer). Primary incubation was 1 hour.  
Detected by chemiluminescence.



EB07419 (4µg/ml) staining of paraffin embedded Human Kidney. Steamed antigen retrieval with citrate buffer pH 6, AP-staining.



EB07419 (4µg/ml) staining of paraffin embedded Human Heart. Steamed antigen retrieval with citrate buffer pH 6, AP-staining.