

UK Office

Everest Biotech Ltd

Cherwell Innovation Centre
77 Heyford Park
Upper Heyford
Oxfordshire
OX25 5HD
UK

Enquiries:

info@everestbiotech.com

Sales:

sales@everestbiotech.com

Tech support:

support@everestbiotech.com

Tel: +44 (0)1869 238326

www.everestbiotech.com

**Research Use Only. Not for
diagnostic or therapeutic use.**

EB07357 - Goat Anti-COMT (internal) Antibody

Size: 100µg specific antibody in 200µl



Target Protein

Principal Names: COMT, catechol-O-methyltransferase

Official Symbol: COMT

Accession Number(s): NP_000745.1; NP_009294.1

Human GeneID(s): [1312](#)

Important Comments: This antibody is expected to recognise both reported isoforms (NP_000745.1 and NP_009294.1)

Immunogen

Peptide with sequence C-QDIIPQLKKKYDVD, from the internal region of the protein sequence according to NP_000745.1; NP_009294.1.

Please note the [peptide](#) is available for sale.

Purification and Storage

Purified from goat serum by ammonium sulphate precipitation followed by antigen affinity chromatography using the immunizing peptide.

Supplied at 0.5 mg/ml in Tris saline, 0.02% sodium azide, pH7.3 with 0.5% bovine serum albumin.

Aliquot and store at -20°C. Minimize freezing and thawing.

Applications Tested

Peptide ELISA: antibody detection limit dilution 1:64000.

Western blot: Approx 28kDa band in Human Testis lysates (calculated MW of 30.0kDa according to NP_000745.1 and 24.5kDa according to NP_009294.1). Recommended concentration: 0.03-0.1µg/ml.

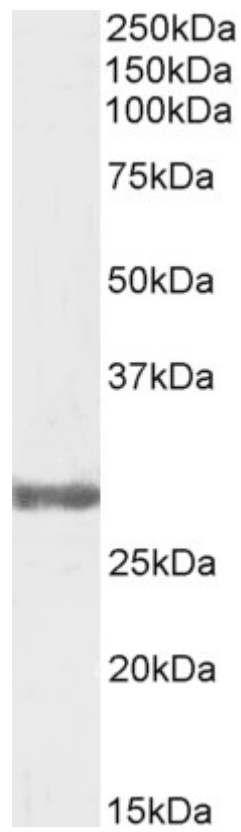
IHC: In paraffin embedded Human Brain (Cerebellum) shows staining of processes coming from the edge of the granular zone into the molecular layer. Recommended concentration: 2-4µg/ml. Paraffin embedded Human Testis and Small Intestine. Recommended concentration: 3.75µg/ml.

Enzyme immunoassay: Sandwich-type ELISA with increasing amount of recombinant COMTcaptured by a rabbit antibody. Recommended reporter concentration: 0.5-2ug/ml.

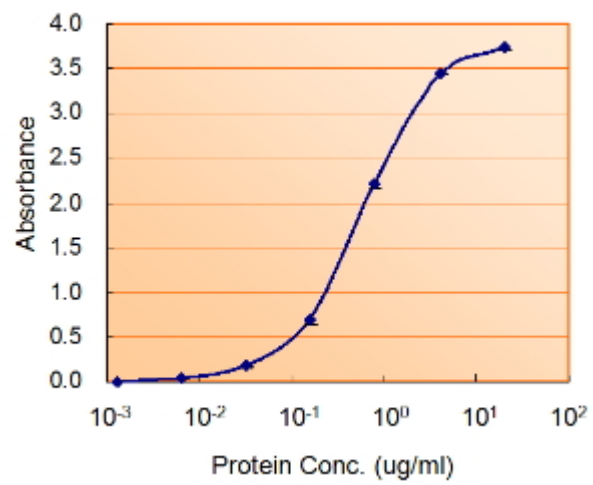
Species Reactivity

Tested: Human

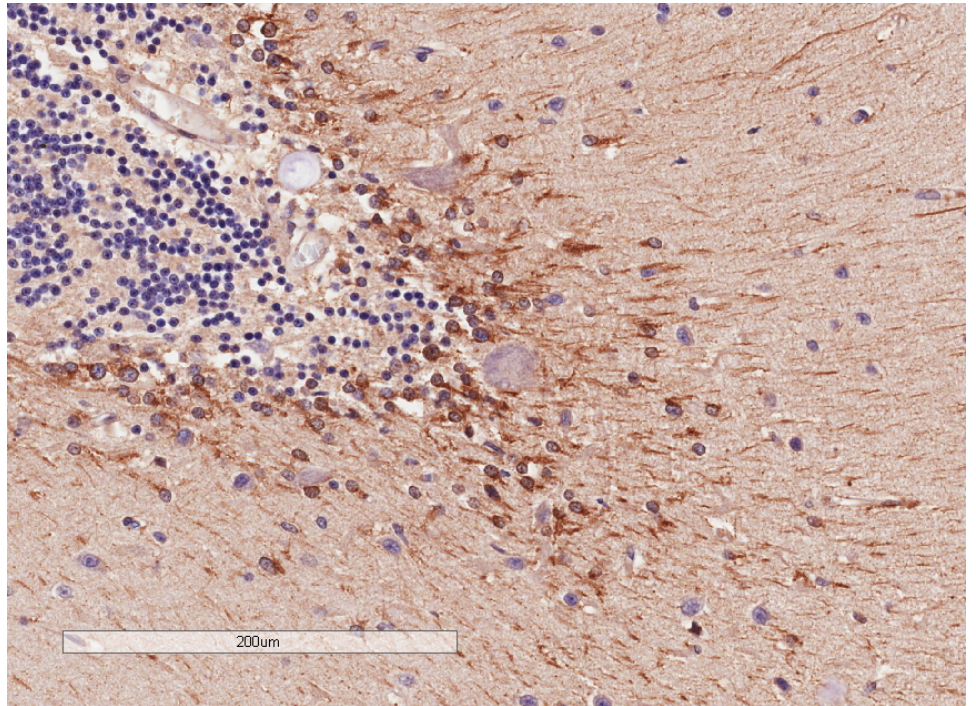
Expected from sequence similarity: Human



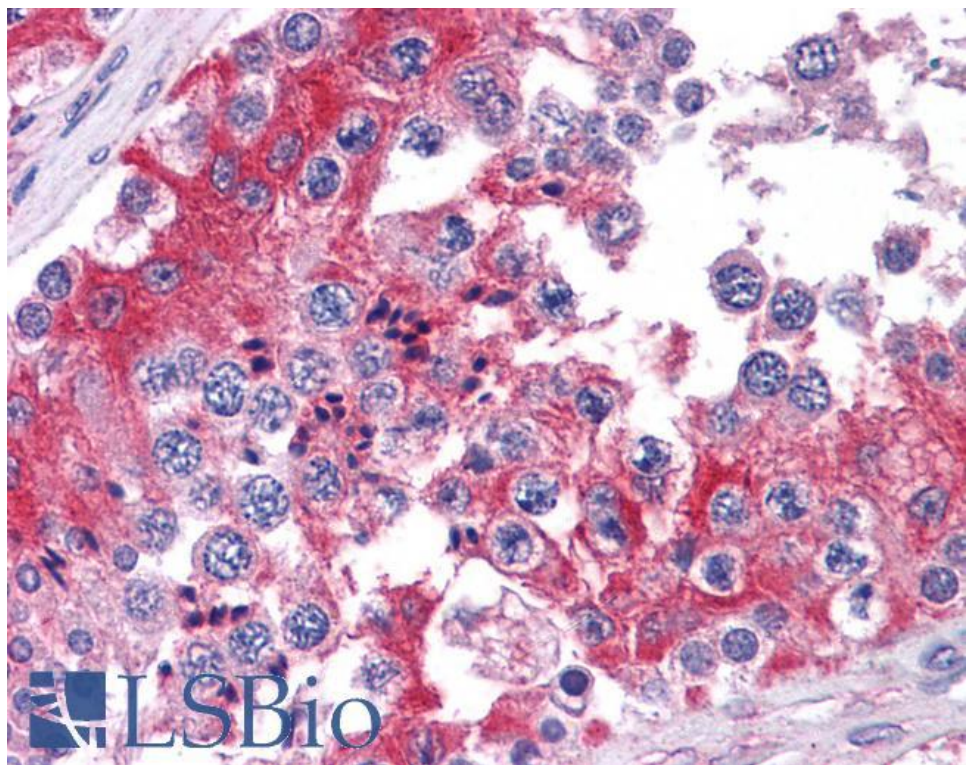
EB07357 (0.3 μ g/ml) staining of Human Testis lysate (35 μ g protein in RIPA buffer). Primary incubation was 1 hour. Detected by chemiluminescence.



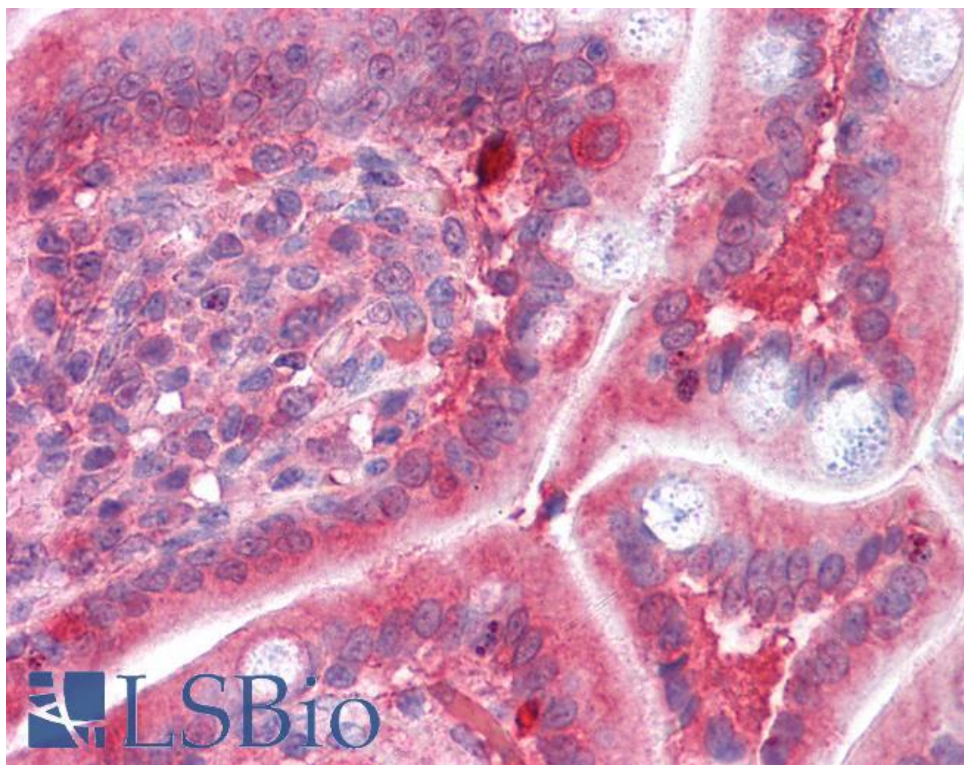
EB7357 (0.5ug/ml) as the reporter with EB002002 as the capture rabbit antibody (2.5ug/ml).



EB07357 (4µg/ml) staining of paraffin embedded Human Cerebellum. Microwaved antigen retrieval with Tris/EDTA buffer pH9, HRP-staining.



EB07357 (3.75µg/ml) staining of paraffin embedded Human Testis. Steamed antigen retrieval with citrate buffer pH 6, AP-staining.



EB07357 (3.75µg/ml) staining of paraffin embedded Human Small Intestine. Steamed antigen retrieval with citrate buffer pH 6, AP-staining.