

UK Office

Everest Biotech Ltd

Cherwell Innovation Centre
77 Heyford Park
Upper Heyford
Oxfordshire
OX25 5HD
UK

Enquiries:

info@everestbiotech.com

Sales:

sales@everestbiotech.com

Tech support:

support@everestbiotech.com

Tel: +44 (0)1869 238326

www.everestbiotech.com

**Research Use Only. Not for
diagnostic or therapeutic use.**

EB06800 - Goat Anti-CLCA1 Antibody

Size: 100µg specific antibody in 200µl



Target Protein

Principal Names: CLCA1, chloride channel, calcium activated, family member 1, HGNC:2015, CaCC, calcium activated chloride channel 1

Official Symbol: CLCA1

Accession Number(s): NP_001276.1

Human GeneID(s): [1179](#)

Important Comments: No cross-reactivity expected with CLCA2 and 3.

Immunogen

Peptide with sequence C-TVTSKTNKDTSK, from the internal region of the protein sequence according to NP_001276.1.

Please note the [peptide](#) is available for sale.

Purification and Storage

Purified from goat serum by ammonium sulphate precipitation followed by antigen affinity chromatography using the immunizing peptide.

Supplied at 0.5 mg/ml in Tris saline, 0.02% sodium azide, pH7.3 with 0.5% bovine serum albumin.

Aliquot and store at -20°C. Minimize freezing and thawing.

Applications Tested

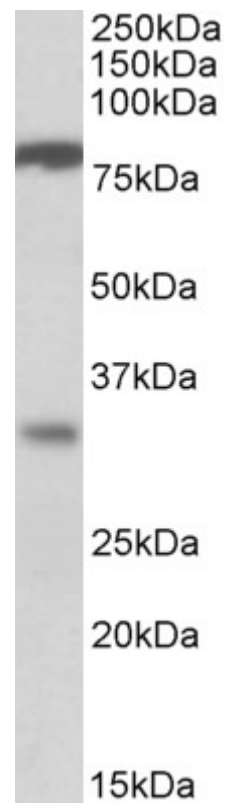
Peptide ELISA: antibody detection limit dilution 1:16000.

Western blot: Experiments gave bands at approx 80kDa and 30kDa in Human Duodenum lysates. These bands correspond to earlier findings in literature with different antibodies (Gruber et al, Genomics. 1998 Dec 1;54(2):200-14.). This protein has a calculated MW of 100kDa according to NP_001276.1. Recommended concentration: 1-3µg/ml.

Species Reactivity

Tested: Human

Expected from sequence similarity: Human



EB06800 (1µg/ml) staining of Human Duodenum lysate (35µg protein in RIPA buffer). Primary incubation was 1 hour. Detected by chemiluminescence.