



UK Office

Everest Biotech Ltd

Cherwell Innovation Centre
77 Heyford Park
Upper Heyford
Oxfordshire
OX25 5HD
UK

Enquiries:

info@everestbiotech.com

Sales:

sales@everestbiotech.com

Tech support:

support@everestbiotech.com

Tel: +44 (0)1869 238326

www.everestbiotech.com

**Research Use Only. Not for
diagnostic or therapeutic use.**

EB08583 - Goat Anti-CLCA1 (aa872-884) Antibody

Size: 100µg specific antibody in 200µl



Target Protein

Principal Names: CLCA1, chloride channel, calcium activated, family member 1, CaCC

Official Symbol: CLCA1

Accession Number(s): NP_001276.2

Human GeneID(s): [1179](#)

Immunogen

Peptide with sequence PETPSPDETSAPC, from the internal region of the protein sequence according to NP_001276.2.

Please note the [peptide](#) is available for sale.

Purification and Storage

Purified from goat serum by ammonium sulphate precipitation followed by antigen affinity chromatography using the immunizing peptide.

Supplied at 0.5 mg/ml in Tris saline, 0.02% sodium azide, pH7.3 with 0.5% bovine serum albumin.

Aliquot and store at -20°C. Minimize freezing and thawing.

Applications Tested

Peptide ELISA: antibody detection limit dilution 1:64000.

Western blot: Approx. 100kDa band observed in Human Kidney and Lung lysates (calculated MW of 100kDa according to NP_001276.2). Recommended concentration: 0.3-1µg/ml.

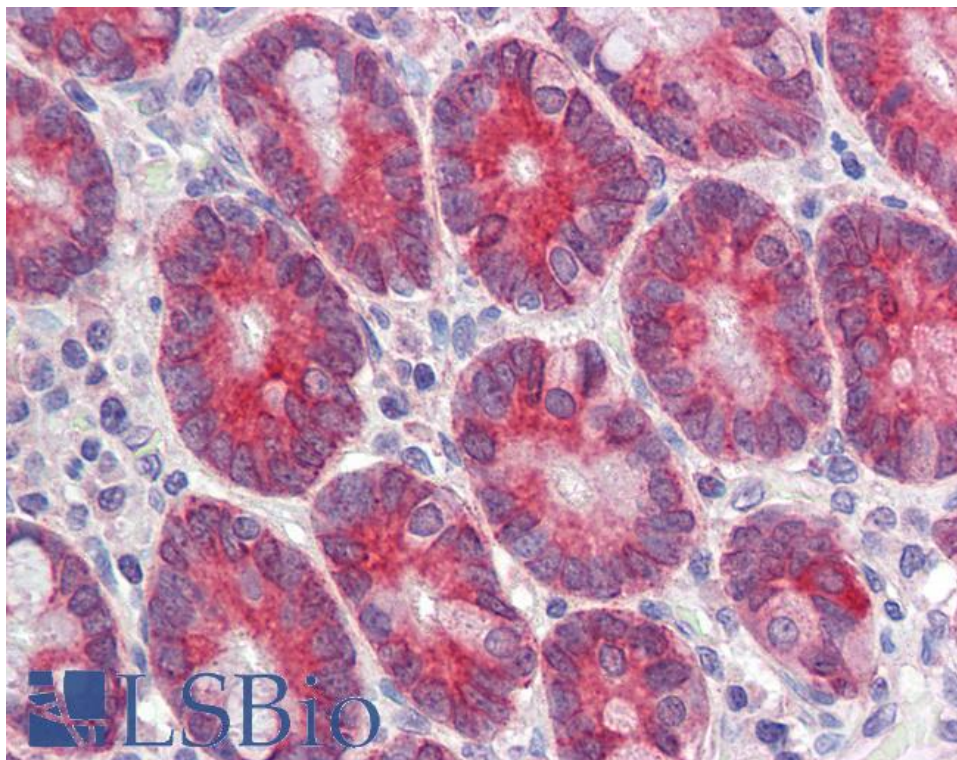
Species Reactivity

Tested: Human

Expected from sequence similarity: Human



EB08583 (0.3 μ g/ml) staining of Human Lung lysate (35 μ g protein in RIPA buffer). Primary incubation was 1 hour. Detected by chemiluminescence.



EB08583 (3.75 μ g/ml) staining of paraffin embedded Human Small Intestine. Steamed antigen retrieval with citrate buffer pH 6, AP-staining. **This data is from a previous batch, not on sale.**