

UK Office

Everest Biotech Ltd

Cherwell Innovation Centre
77 Heyford Park
Upper Heyford
Oxfordshire
OX25 5HD
UK

Enquiries:

info@everestbiotech.com

Sales:

sales@everestbiotech.com

Tech support:

support@everestbiotech.com

Tel: +44 (0)1869 238326

www.everestbiotech.com

**Research Use Only. Not for
diagnostic or therapeutic use.**

EB10968 - Goat Anti-CHRNA5 Antibody

Size: 100µg specific antibody in 200µl



Target Protein

Principal Names: CHRNA5, cholinergic receptor, nicotinic, alpha 5, LNCR2, Cholinergic receptor, neuronal nicotinic, alpha polypeptide-5, neuronal acetylcholine receptor subunit alpha-5, neuronal nicotinic acetylcholine receptor, alpha5 subunit

Official Symbol: CHRNA5

Accession Number(s): NP_000736.2

Human GeneID(s): [1138](#)

Immunogen

Peptide with sequence C-HVDRYFTQKEET, from the internal region of the protein sequence according to NP_000736.2.

Please note the [peptide](#) is available for sale.

Purification and Storage

Purified from goat serum by ammonium sulphate precipitation followed by antigen affinity chromatography using the immunizing peptide.

Supplied at 0.5 mg/ml in Tris saline, 0.02% sodium azide, pH7.3 with 0.5% bovine serum albumin.

Aliquot and store at -20°C. Minimize freezing and thawing.

Applications Tested

Peptide ELISA: antibody detection limit dilution 1:32000.

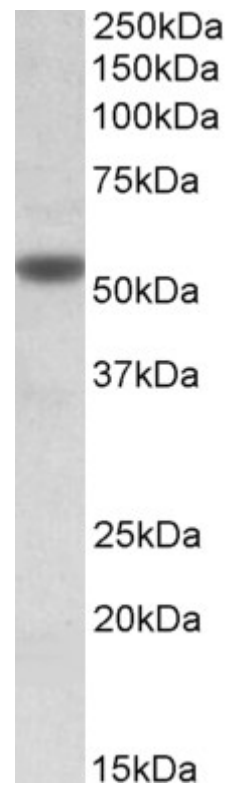
Western blot: Approx 55kDa band observed in lysates of cell line KELLY (calculated MW of 53.1kDa according to NP_000736.2). Recommended concentration: 1-3µg/ml. Primary incubation was 1 hour.

IHC: Paraffin embedded Human Colon (submucosal plexus). Recommended concentration: 3.75µg/ml.

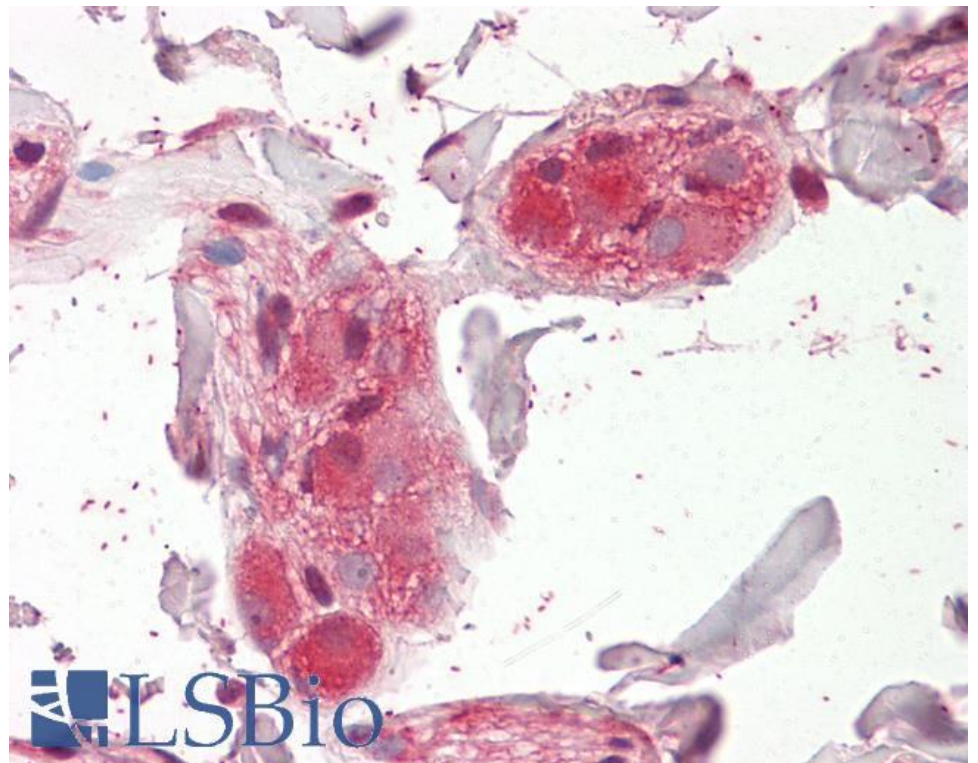
Species Reactivity

Tested: Human

Expected from sequence similarity: Human



EB10968 (1 μ g/ml) staining of KELLY lysate (35 μ g protein in RIPA buffer). Detected by chemiluminescence.



EB10968 (3.75 μ g/ml) staining of paraffin embedded Human Colon. Steamed antigen retrieval with citrate buffer pH 6, AP-staining.