

UK Office

Everest Biotech Ltd

Cherwell Innovation Centre
77 Heyford Park
Upper Heyford
Oxfordshire
OX25 5HD
UK

Enquiries:

info@everestbiotech.com

Sales:

sales@everestbiotech.com

Tech support:

support@everestbiotech.com

Tel: +44 (0)1869 238326

www.everestbiotech.com

**Research Use Only. Not for
diagnostic or therapeutic use.**

EB07657 - Goat Anti-CGI58 / ABHD5 Antibody

Size: 100µg specific antibody in 200µl



Target Protein

Principal Names: ABHD5, CGI58 protein, aCGI58, bhydrolase domain containing 5, CDS, IECN2, MGC8731, NCIE2

Official Symbol: ABHD5

Accession Number(s): NP_057090.2

Human GeneID(s): [51099](#)

Non-Human GeneID(s): 67469 (mouse), 316122 (rat)

Important Comments: This antibody is not expected to cross-react with ABHD4.

Immunogen

Peptide with sequence C-FPERPDLADQDR, from the internal region of the protein sequence according to NP_057090.2.

Please note the [peptide](#) is available for sale.

Purification and Storage

Purified from goat serum by ammonium sulphate precipitation followed by antigen affinity chromatography using the immunizing peptide.

Supplied at 0.5 mg/ml in Tris saline, 0.02% sodium azide, pH7.3 with 0.5% bovine serum albumin.

Aliquot and store at -20°C. Minimize freezing and thawing.

Applications Tested

Peptide ELISA: antibody detection limit dilution 1:16000.

Western blot: Approx 40kDa band observed in lysates of cell lines NIH3T3/3TL (calculated MW of 39.1kDa according to NP_057090.2). Additional faint bands of 26kDa and 18kDa were also observed, and were successfully blocked by incubation with the immunizing peptide. Recommended concentration: 0.2-0.6µg/ml Primary incubation 1 hour at room temperature.

IHC: Paraffin embedded Human Pancreas and Kidney. Recommended concentration: 3.75µg/ml.

Immunofluorescence: Strong expression of the protein seen in the nucleus and cytoplasm/ vesicle of U2OS cells. Recommended concentration: 10µg/ml.

Species Reactivity

Tested: Human, Mouse

Expected from sequence similarity: Human, Mouse, Rat, Dog

Specific Reference

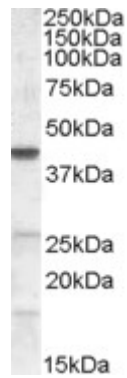
This antibody has been successfully used in Western blot on Cow:

Koltes DA, Spurlock DM.

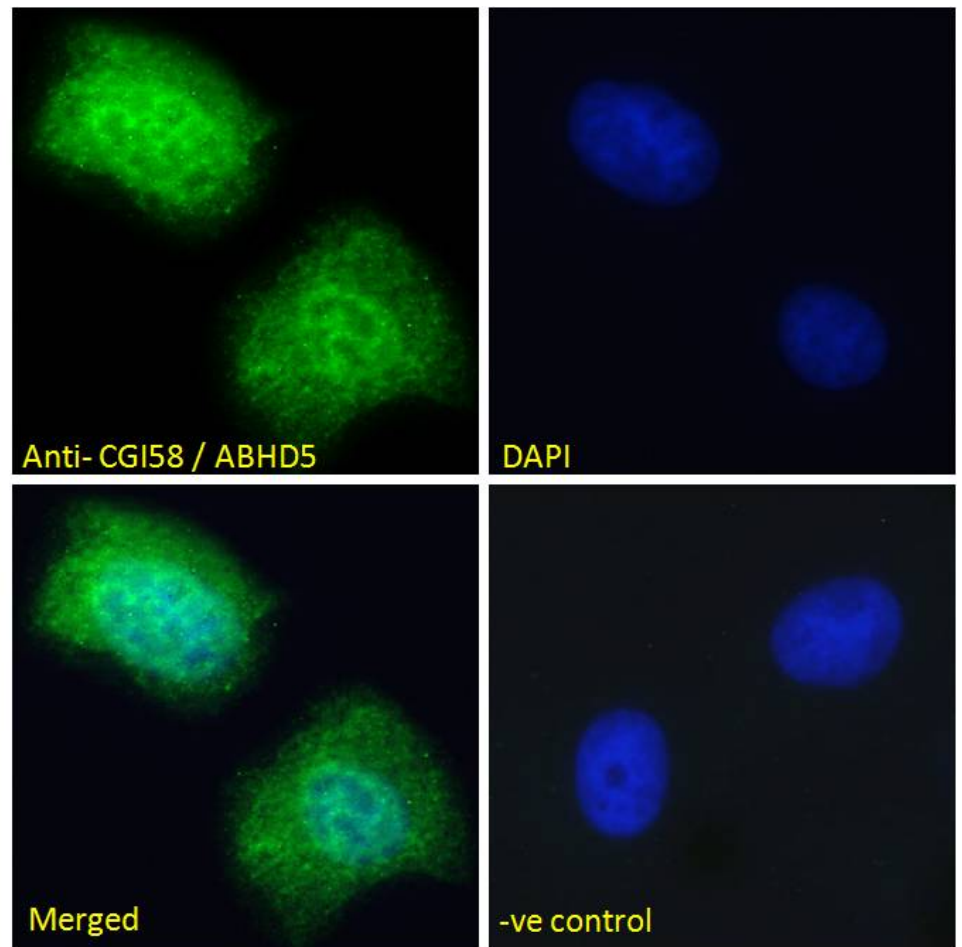
Coordination of lipid droplet-associated proteins during the transition period of Holstein dairy cows.

J Dairy Sci. 2011 Apr;94(4):1839-48.

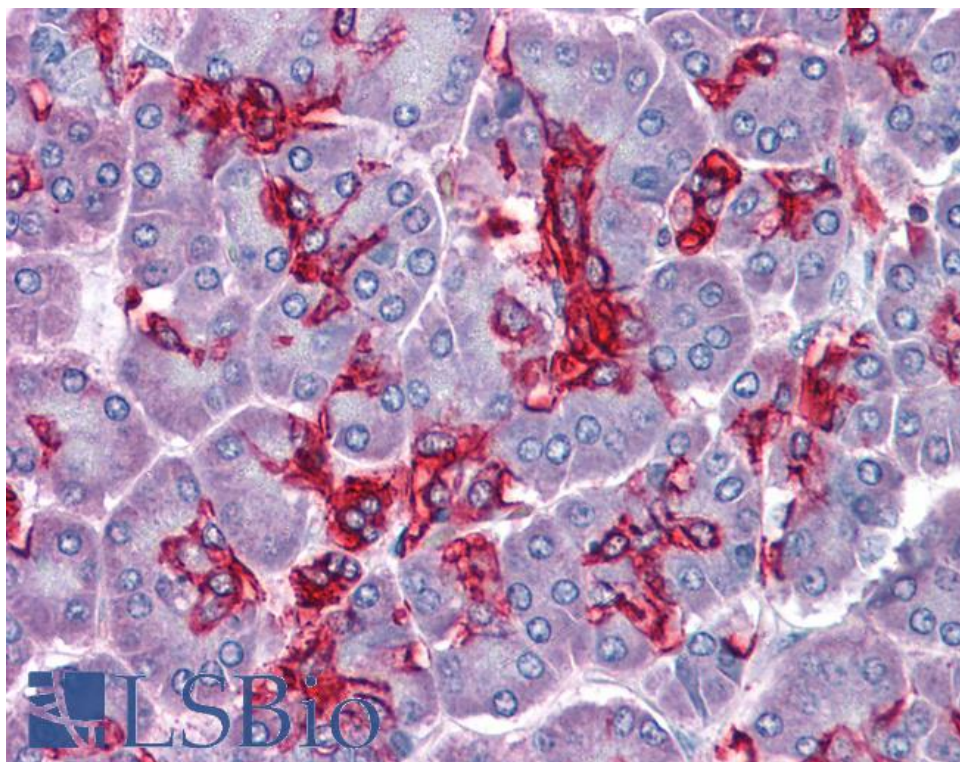
PMID: 21426973



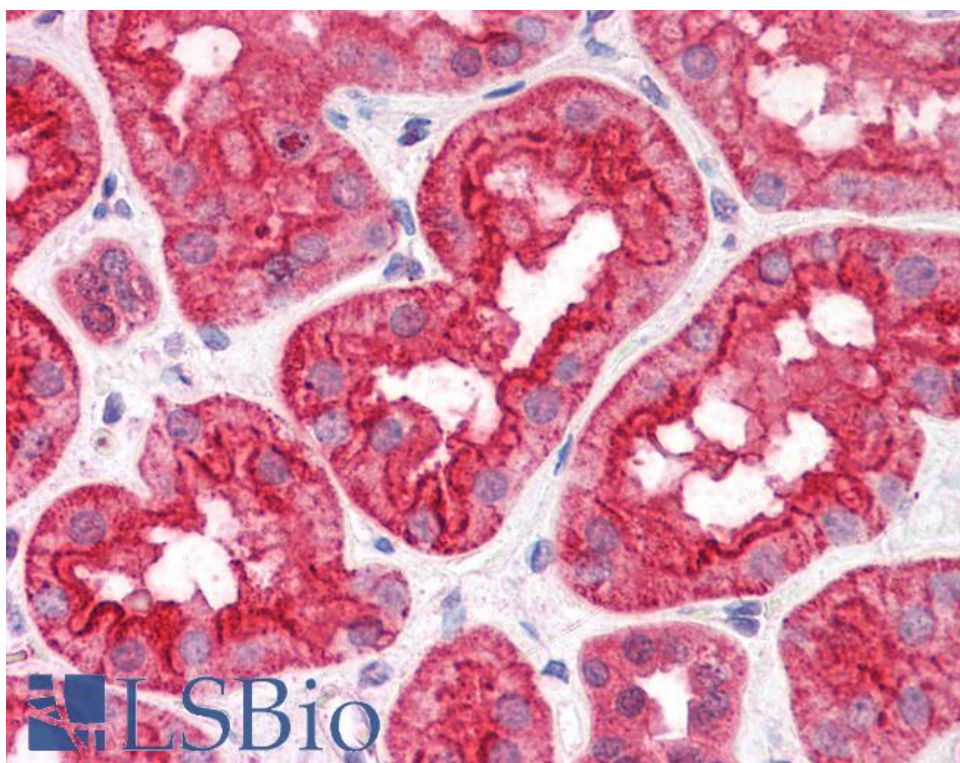
EB07657 (0.2 μ g/ml) staining of NIH3T3 lysate (35 μ g protein in RIPA buffer). Detected by chemiluminescence.



EB07657 Immunofluorescence analysis of paraformaldehyde fixed U2OS cells, permeabilized with 0.15% Triton. Primary incubation 1hr (10 μ g/ml) followed by Alexa Fluor 488 secondary antibody (2 μ g/ml), showing nuclear and vesicle/ cytoplasmic staining. The nuclear stain is DAPI (blue). Negative control: Unimmunized goat IgG (10 μ g/ml) followed by Alexa Fluor 488 secondary antibody (2 μ g/ml).



EB07657 (3.75µg/ml) staining of paraffin embedded Human Pancreas. Steamed antigen retrieval with citrate buffer pH 6, AP-staining.



EB07657 (3.75µg/ml) staining of paraffin embedded Human Kidney. Steamed antigen retrieval with citrate buffer pH 6, AP-staining.