

UK Office

Everest Biotech Ltd

Cherwell Innovation Centre
77 Heyford Park
Upper Heyford
Oxfordshire
OX25 5HD
UK

Enquiries:

info@everestbiotech.com

Sales:

sales@everestbiotech.com

Tech support:

support@everestbiotech.com

Tel: +44 (0)1869 238326

www.everestbiotech.com

**Research Use Only. Not for
diagnostic or therapeutic use.**

EB09122 - Goat Anti-CEP290 Antibody

Size: 100µg specific antibody in 200µl



Target Protein

Principal Names: CEP290, centrosomal protein 290kDa, 3H11Ag, BBS14, FLJ13615, FLJ21979, JBTS5, JBTS6, KIAA0373, LCA10, MKS4, NPHP6, SLSN6, rd16, CTCL tumor antigen se2-2, monoclonal antibody 3H11 antigen, nephrocytin-6, prostate cancer antigen T21

Official Symbol: CEP290

Accession Number(s): NP_079390.3

Human GeneID(s): [80184](#)

Non-Human GeneID(s): 216274 (mouse)

Important Comments: Despite similarity of the immunizing peptide with the mouse protein, this antibody was demonstrated to weak for mouse Cep290.

Immunogen

Peptide with sequence C-RNSKHLKQQQYRAEN, from the internal region of the protein sequence according to NP_079390.3.

Please note the [peptide](#) is available for sale.

Purification and Storage

Purified from goat serum by ammonium sulphate precipitation followed by antigen affinity chromatography using the immunizing peptide.

Supplied at 0.5 mg/ml in Tris saline, 0.02% sodium azide, pH7.3 with 0.5% bovine serum albumin.

Aliquot and store at -20°C. Minimize freezing and thawing.

Applications Tested

Peptide ELISA: antibody detection limit dilution 1:128000.

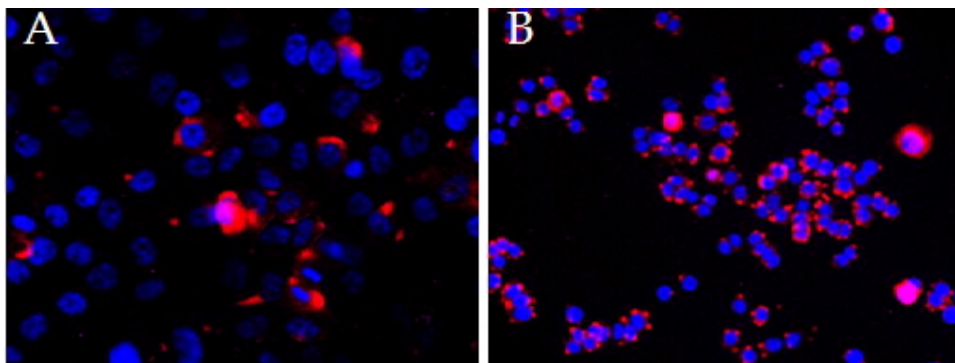
Western blot: Preliminary experiments gave an approx 80kDa band in Human Kidney, Testis, and HeLa lysates after 1µg/ml antibody staining. Please note that currently we cannot find an explanation in the literature for the band we observe given the calculated size of 290kDa according to NP_079390.3. The 80kDa band was successfully blocked by incubation with the immunizing peptide.

Immunocytochemistry: Formaldehyde-fixed cell lines derived from Prostate Cancer and from Breast Cancer show typical centrosomal staining. Recommended concentration: 2-3ug/ml

Species Reactivity

Tested: Human

Expected from sequence similarity: Human



EB09122 (2.5ug/ml overnight staining of cell lines OPCT-1 (A) and MDA468 (fB) with Alexa Fluor 568 (red) and nuclear counter staining with DAPI (blue). Data kindly provided by Dr S, McArdle, and obtained by Sumanjeet Malhi , John van Geest Research Centre, Nottingham, UK