

UK Office

Everest Biotech Ltd

Cherwell Innovation Centre
77 Heyford Park
Upper Heyford
Oxfordshire
OX25 5HD
UK

Enquiries:

info@everestbiotech.com

Sales:

sales@everestbiotech.com

Tech support:

support@everestbiotech.com

Tel: +44 (0)1869 238326

www.everestbiotech.com

**Research Use Only. Not for
diagnostic or therapeutic use.**

EB06121 - Goat Anti-CENTA2 Antibody

Size: 100µg specific antibody in 200µl



Target Protein

Principal Names: ADAP2, CENTA2, centaurin, alpha 2, HSA272195, centaurin-alpha 2 protein, ArfGAP with dual PH domains 2, cent-b, centaurin beta

Official Symbol: ADAP2

Accession Number(s): NP_060874.1

Human GeneID(s): [55803](#)

Immunogen

Peptide with sequence C-RLTASTESGRSSR, from the C Terminus of the protein sequence according to NP_060874.1.

Please note the [peptide](#) is available for sale.

Purification and Storage

Purified from goat serum by ammonium sulphate precipitation followed by antigen affinity chromatography using the immunizing peptide.

Supplied at 0.5 mg/ml in Tris saline, 0.02% sodium azide, pH7.3 with 0.5% bovine serum albumin.

Aliquot and store at -20°C. Minimize freezing and thawing.

Applications Tested

Peptide ELISA: antibody detection limit dilution 1:32000.

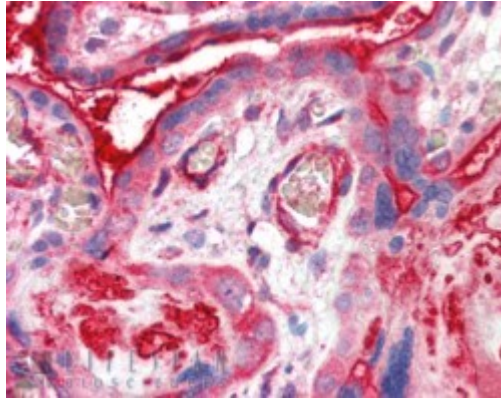
Western blot: Preliminary experiments in Human Brain and Heart lysates gave no specific signal but low background (at antibody concentration up to 1µg/ml). We would appreciate any feedback from people in the field - have any results been reported with other antibodies/lysates?

IHC: In paraffin embedded Human Placenta shows strong staining of cytoplasm in syncytiotrophoblasts.. Recommended concentration, 5-10µg/ml.

Species Reactivity

Tested: Human

Expected from sequence similarity: Human



EB06121 (5µg/ml) staining of paraffin embedded Human Placenta. Steamed antigen retrieval with citrate buffer pH 6, AP-staining.