

## UK Office

### Everest Biotech Ltd

Cherwell Innovation Centre  
77 Heyford Park  
Upper Heyford  
Oxfordshire  
OX25 5HD  
UK

Enquiries:

[info@everestbiotech.com](mailto:info@everestbiotech.com)

Sales:

[sales@everestbiotech.com](mailto:sales@everestbiotech.com)

Tech support:

[support@everestbiotech.com](mailto:support@everestbiotech.com)

Tel: +44 (0)1869 238326

[www.everestbiotech.com](http://www.everestbiotech.com)

**Research Use Only. Not for  
diagnostic or therapeutic use.**

## EB11876 - Goat Anti-Cd97 (mouse) Antibody

Size: 100µg specific antibody in 200µl



### Target Protein

**Principal Names:** Cd97, CD97 antigen, AA409984, TM7LN1, EGF-TM7 receptor, adhesion G protein-coupled receptor E5

**Official Symbol:** Adgre5

**Accession Number(s):** NP\_036055.2; NP\_001156501.1; NP\_001156502.1; NP\_001156503.1

**Non-Human GeneID(s):** 26364 (mouse)

**Important Comments:** This antibody is expected to recognize all reported isoforms (NP\_036055.2; NP\_001156501.1; NP\_001156502.1; NP\_001156503.1).

### Immunogen

Peptide with sequence C-TSQTRALRSSSES, from the C Terminus of the protein sequence according to NP\_036055.2; NP\_001156501.1; NP\_001156502.1; NP\_001156503.1.

Please note the [peptide](#) is available for sale.

### Purification and Storage

Purified from goat serum by ammonium sulphate precipitation followed by antigen affinity chromatography using the immunizing peptide.

Supplied at 0.5 mg/ml in Tris saline, 0.02% sodium azide, pH7.3 with 0.5% bovine serum albumin.

Aliquot and store at -20°C. Minimize freezing and thawing.

### Applications Tested

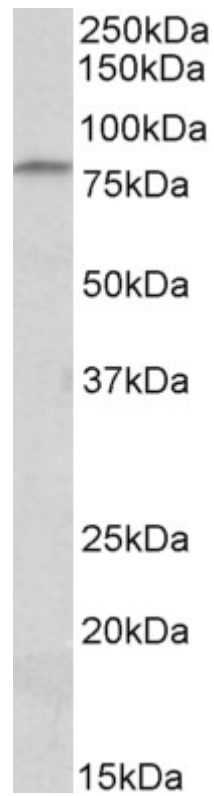
**Peptide ELISA:** antibody detection limit dilution 1:128000.

**Western blot:** Approx 80kDa band observed in Mouse Thymus and Spleen lysates (calculated MW of 80.2kDa according to NP\_001156503.1). The beta chain is detected as a ~30kDa band in Mouse Colon (transgenic overexpressing Cd76 in intestines) and not in the knock-out. Recommended concentration: 0.3-1µg/ml.

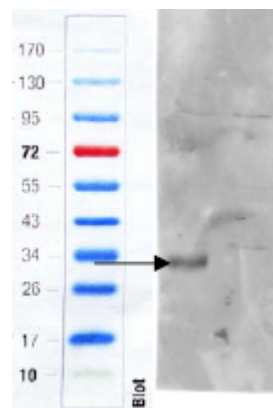
### Species Reactivity

**Tested:** Mouse

**Expected from sequence similarity:** Mouse



EB11876 (0.3 $\mu$ g/ml) staining of Mouse Thymus lysate (35 $\mu$ g protein in RIPA buffer). Primary incubation was 1 hour. Detected by chemiluminescence.



EB11876 (1 $\mu$ g/ml) staining of Mouse Colon (wt, left lane, knock-out right lane) lysate (35 $\mu$ g protein in RIPA buffer). Primary incubation was 1 hour. Detected by infrared fluorescence (Odyssey). Data obtained from anonymous customer