

## UK Office

### Everest Biotech Ltd

Cherwell Innovation Centre  
77 Heyford Park  
Upper Heyford  
Oxfordshire  
OX25 5HD  
UK

Enquiries:

[info@everestbiotech.com](mailto:info@everestbiotech.com)

Sales:

[sales@everestbiotech.com](mailto:sales@everestbiotech.com)

Tech support:

[support@everestbiotech.com](mailto:support@everestbiotech.com)

Tel: +44 (0)1869 238326

[www.everestbiotech.com](http://www.everestbiotech.com)

**Research Use Only. Not for  
diagnostic or therapeutic use.**

## EB06414 - Goat Anti-CD2BP2 (N Terminus) Antibody

Size: 100µg specific antibody in 200µl



### Target Protein

**Principal Names:** CD2BP2, FWP010, LIN1, Snu40, CD2 antigen (cytoplasmic tail) binding protein 2, CD2 (cytoplasmic tail) binding protein 2, CD2 antigen (cytoplasmic tail)-binding protein 2, U5-52K, CD2 binding protein 2, CD2 cytoplasmic domain binding protein 2, U5 snRNP 52K protein

**Official Symbol:** CD2BP2

**Accession Number(s):** NP\_006101.1

**Human GeneID(s):** [10421](#)

### Immunogen

Peptide with sequence PKRKVTFQGVGDE-C, from the N Terminus of the protein sequence according to NP\_006101.1.

Please note the [peptide](#) is available for sale.

### Purification and Storage

Purified from goat serum by ammonium sulphate precipitation followed by antigen affinity chromatography using the immunizing peptide.

Supplied at 0.5 mg/ml in Tris saline, 0.02% sodium azide, pH7.3 with 0.5% bovine serum albumin.

Aliquot and store at -20°C. Minimize freezing and thawing.

### Applications Tested

**Peptide ELISA:** antibody detection limit dilution 1:32000.

**Western blot:** Approx 50kDa band observed in Human Lymph Node, Thymus and Tonsil lysates (calculated MW of 37.6kDa according to NP\_006101.1). The observed molecular weight corresponds to earlier findings in literature with different antibodies (Nishizawa et al, Proc Natl Acad Sci U S A. 1998 Dec 8;95(25):14897-902). Recommended concentration: 0.3-1.0µg/ml.

**IHC:** In paraffin embedded Human Spleen shows nucleolar staining in select splenocytes. Recommended concentration: 5-10µg/ml.

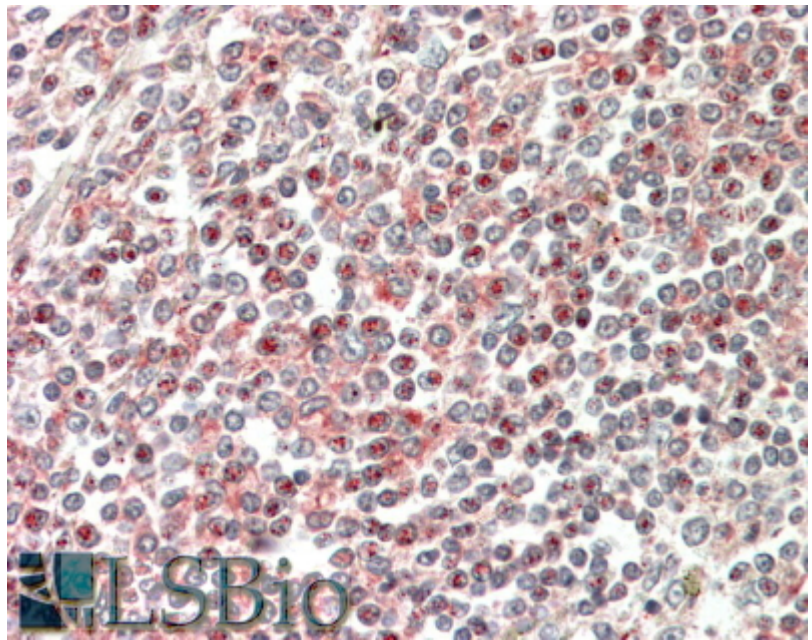
### Species Reactivity

**Tested:** Human

**Expected from sequence similarity:** Human, Mouse, Rat, Dog, Cow



EB06414 (0.3µg/ml) staining of Human Thymus lysate (35µg protein in RIPA buffer). Primary incubation was 1 hour. Detected by chemiluminescence.



EB06414 (5µg/ml) staining of paraffin embedded Human Spleen. Steamed antigen retrieval with citrate buffer pH 6, AP-staining.