

UK Office

Everest Biotech Ltd

Cherwell Innovation Centre
77 Heyford Park
Upper Heyford
Oxfordshire
OX25 5HD
UK

Enquiries:

info@everestbiotech.com

Sales:

sales@everestbiotech.com

Tech support:

support@everestbiotech.com

Tel: +44 (0)1869 238326

www.everestbiotech.com

**Research Use Only. Not for
diagnostic or therapeutic use.**

EB08754 - Goat Anti-CBX8 Antibody

Size: 100µg specific antibody in 200µl



Target Protein

Principal Names: CBX8, chromobox homolog 8 (Pc class homolog, Drosophila), HPC3, PC3, RC1, chromobox homolog 8, polycomb 3

Official Symbol: CBX8

Accession Number(s): NP_065700.1

Human GeneID(s): [57332](#)

Non-Human GeneID(s): 30951 (mouse)

Immunogen

Peptide with sequence C-RERGTSRVDDKPSS, from the internal region of the protein sequence according to NP_065700.1.

Please note the [peptide](#) is available for sale.

Purification and Storage

Purified from goat serum by ammonium sulphate precipitation followed by antigen affinity chromatography using the immunizing peptide.

Supplied at 0.5 mg/ml in Tris saline, 0.02% sodium azide, pH7.3 with 0.5% bovine serum albumin.

Aliquot and store at -20°C. Minimize freezing and thawing.

Applications Tested

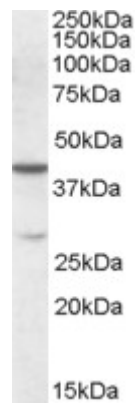
Peptide ELISA: antibody detection limit dilution 1:32000.

Western blot: Approx. 40kDa band observed in lysates of cell line K562 (calculated MW of 43.4kDa according to NP_065700.1). Recommended concentration: 0.1-0.3µg/ml. An additional band of unknown identity was also consistently observed at 28kDa. This band was successfully blocked by incubation with the immunising peptide. We would appreciate any feedback from people in the field - have any such results been reported with other antibodies/lysates? Have any further splice variants/modified forms been reported?

Species Reactivity

Tested: Human

Expected from sequence similarity: Human, Mouse, Rat, Pig, Cow



EB08754 (0.1µg/ml) staining of K562 lysate (35µg protein in RIPA buffer). Primary incubation was 1 hour.
Detected by chemiluminescence.