

## UK Office

### Everest Biotech Ltd

Cherwell Innovation Centre  
77 Heyford Park  
Upper Heyford  
Oxfordshire  
OX25 5HD  
UK

Enquiries:

[info@everestbiotech.com](mailto:info@everestbiotech.com)

Sales:

[sales@everestbiotech.com](mailto:sales@everestbiotech.com)

Tech support:

[support@everestbiotech.com](mailto:support@everestbiotech.com)

Tel: +44 (0)1869 238326

[www.everestbiotech.com](http://www.everestbiotech.com)

**Research Use Only. Not for  
diagnostic or therapeutic use.**

## EB05886 - Goat Anti-CARD11 Antibody

Size: 100µg specific antibody in 200µl



### Target Protein

**Principal Names:** CARD11, caspase recruitment domain family, member 11, BIMP3, CARMA1, MGC133069, card-maguk protein 1, bcl10-interacting maguk protein 3

**Official Symbol:** CARD11

**Accession Number(s):** NP\_115791.3

**Human GeneID(s):** [84433](#)

**Non-Human GeneID(s):** 108723 (mouse)

### Immunogen

Peptide with sequence C-QRKTIVDEEDQL, from the C Terminus of the protein sequence according to NP\_115791.3.

Please note the [peptide](#) is available for sale.

### Purification and Storage

Purified from goat serum by ammonium sulphate precipitation followed by antigen affinity chromatography using the immunizing peptide.

Supplied at 0.5 mg/ml in Tris saline, 0.02% sodium azide, pH7.3 with 0.5% bovine serum albumin.

Aliquot and store at -20°C. Minimize freezing and thawing.

### Applications Tested

**Peptide ELISA:** antibody detection limit dilution 1:32000.

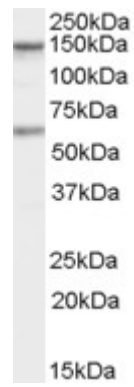
**Western blot:** Approx 150+65kDa bands observed in lysates of cell line Jurkat (calculated MW of 133kDa according to NP\_115791.2). Recommended concentration: 1-3µg/ml. An additional band of unknown identity was also consistently observed at 60kDa. This band was successfully blocked by incubation with the immunising peptide.

**IHC:** In paraffin embedded Human Spleen shows nuclear staining. Recommended concentration: 2-5µg/ml.

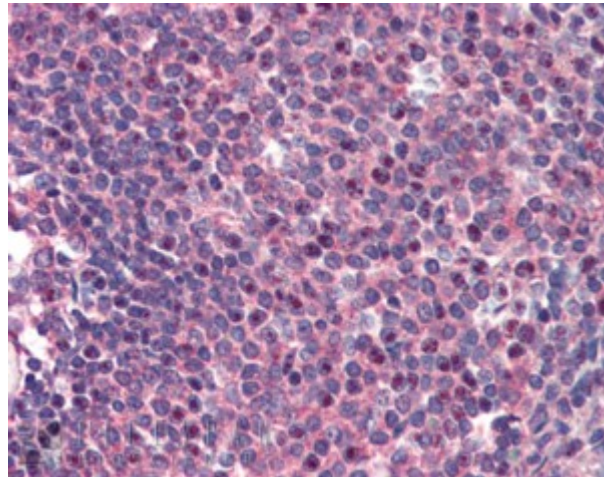
### Species Reactivity

**Tested:** Human

**Expected from sequence similarity:** Human, Mouse, Dog, Cow



EB05886 staining (1 $\mu$ g/ml) of Human Jurkat cells (RIPA buffer, 35 $\mu$ g total protein per lane). Primary incubated for 1 hour. Detected by chemiluminescence.



EB05886 (2 $\mu$ g/ml) staining of paraffin embedded Human Spleen. Steamed antigen retrieval with citrate buffer pH 6, AP-staining.