

UK Office

Everest Biotech Ltd

Cherwell Innovation Centre
77 Heyford Park
Upper Heyford
Oxfordshire
OX25 5HD
UK

Enquiries:

info@everestbiotech.com

Sales:

sales@everestbiotech.com

Tech support:

support@everestbiotech.com

Tel: +44 (0)1869 238326

www.everestbiotech.com

**Research Use Only. Not for
diagnostic or therapeutic use.**

EB06945 - Goat Anti-Cannabinoid Receptor 1 Antibody

Size: 100µg specific antibody in 200µl



Target Protein

Principal Names: cannabinoid receptor 1 (brain), CNR1, HGNC:2159, CANN6, CB-R, CB1, CB1A, CB1K5, CNR, central cannabinoid receptor, RP1-23D17.1, CB1R, OTTHUMP00000016838, OTTHUMP00000016839, cannabinoid receptor 1

Official Symbol: CNR1

Accession Number(s): NP_057167.2; NP_001153732.1; NP_001153731.1; NP_001153730.1; NP_001153698.1; NP_149421.1

Human GeneID(s): [1268](#)

Non-Human GeneID(s): 12801 (mouse), 25248 (rat)

Important Comments: This antibody is expected to recognise both reported isoforms. Isoform a (NP_057167.2; NP_001153732.1; NP_001153731.1; NP_001153730.1; NP_001153698.1) and isoform b (NP_149421.1).

Immunogen

Peptide with sequence C-HTSEDGKVQVTRPDQ, from the internal region of the protein sequence according to NP_057167.2; NP_001153732.1; NP_001153731.1; NP_001153730.1; NP_001153698.1; NP_149421.1.

Please note the [peptide](#) is available for sale.

Purification and Storage

Purified from goat serum by ammonium sulphate precipitation followed by antigen affinity chromatography using the immunizing peptide.

Supplied at 0.5 mg/ml in Tris saline, 0.02% sodium azide, pH7.3 with 0.5% bovine serum albumin.

Aliquot and store at -20°C. Minimize freezing and thawing.

Applications Tested

Peptide ELISA: antibody detection limit dilution 1:32000.

Western blot: Approx 65kDa band observed in Rat Brain lysates (calculated MW of 52.7kDa according to Rat NP_036916.1 and 52.9kDa according to Human NP_057167.2). The observed molecular weight corresponds to earlier findings in literature with different antibodies (Porcella et al, Eur J Neurosci. 2000 Mar;12(3):1123-7. PMID: 10762343). Recommended concentration: 0.1-0.3µg/ml.

Species Reactivity

Tested: Rat

Expected from sequence similarity: Human, Mouse, Rat, Dog

Specific Reference

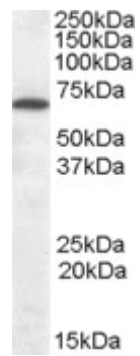
This antibody has been successfully used in Western blot in Human:

Fügedi G, Molnár M, Rigó J Jr, Schönleber J, Kovalszky I, Molvarec A.

Increased placental expression of cannabinoid receptor 1 in preeclampsia: an observational study.

BMC Pregnancy Childbirth. 2014 Dec 2;14:395

PMID: 25444073



EB06945 (0.1µg/ml) staining of Rat Brain lysate (35µg protein in RIPA buffer). Primary incubation was 1 hour.
Detected by chemiluminescence.