



UK Office

Everest Biotech Ltd

Cherwell Innovation Centre
77 Heyford Park
Upper Heyford
Oxfordshire
OX25 5HD
UK

Enquiries:

info@everestbiotech.com

Sales:

sales@everestbiotech.com

Tech support:

support@everestbiotech.com

Tel: +44 (0)1869 238326

www.everestbiotech.com

**Research Use Only. Not for
diagnostic or therapeutic use.**

EB09515 - Goat Anti-Calponin 1 / CNN1 Antibody

Size: 100µg specific antibody in 200µl



Target Protein

Principal Names: CNN1, calponin 1, basic, smooth muscle, SMCC, Sm-Calp, calponins, basic

Official Symbol: CNN1

Accession Number(s): NP_001290.2

Human GeneID(s): [1264](#)

Non-Human GeneID(s): 12797 (mouse), 65204 (rat)

Immunogen

Peptide with sequence C-KRQIFEPGLGMEH, from the internal region (near C Terminus) of the protein sequence according to NP_001290.2.

Please note the [peptide](#) is available for sale.

Purification and Storage

Purified from goat serum by ammonium sulphate precipitation followed by antigen affinity chromatography using the immunizing peptide.

Supplied at 0.5 mg/ml in Tris saline, 0.02% sodium azide, pH7.3 with 0.5% bovine serum albumin.

Aliquot and store at -20°C. Minimize freezing and thawing.

Applications Tested

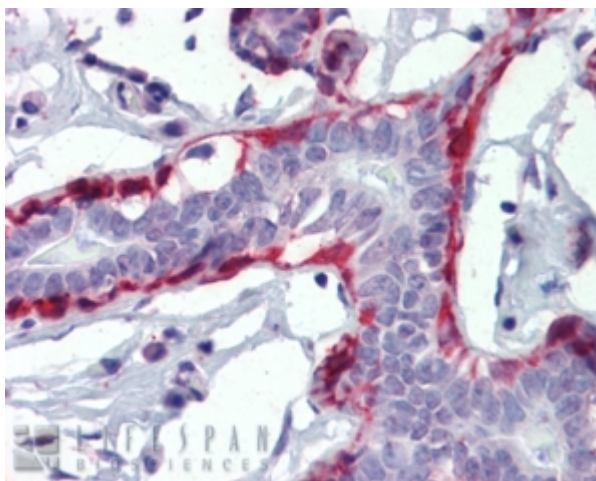
Peptide ELISA: antibody detection limit dilution 1:32000.

IHC: In paraffin embedded Human Breast shows staining of myoepithelial cells surrounding the ductal lining. Recommended concentration, 3-6µg/ml.

Species Reactivity

Tested: Human

Expected from sequence similarity: Human, Mouse, Rat, Dog, Cow



EB09515 (3.8µg/ml) staining of paraffin embedded Human Breast. Steamed antigen retrieval with citrate buffer pH 6, AP-staining.