

UK Office

Everest Biotech Ltd

Cherwell Innovation Centre
77 Heyford Park
Upper Heyford
Oxfordshire
OX25 5HD
UK

Enquiries:

info@everestbiotech.com

Sales:

sales@everestbiotech.com

Tech support:

support@everestbiotech.com

Tel: +44 (0)1869 238326

www.everestbiotech.com

**Research Use Only. Not for
diagnostic or therapeutic use.**

EB08194 - Goat Anti-CADM4 (C Terminus) Antibody

Size: 100µg specific antibody in 200µl



Target Protein

Principal Names: CADM4, cell adhesion molecule 4, IGSF4C, Necl-4, TSLL2, synCAM4, TSLC1-like 2, immunoglobulin superfamily, member 4C, nectin-like 4

Official Symbol: CADM4

Accession Number(s): NP_660339.1

Human GeneID(s): [199731](#)

Immunogen

Peptide with sequence C-REAFLNGSDGHRKE, from the C Terminus of the protein sequence according to NP_660339.1.

Please note the [peptide](#) is available for sale.

Purification and Storage

Purified from goat serum by ammonium sulphate precipitation followed by antigen affinity chromatography using the immunizing peptide.

Supplied at 0.5 mg/ml in Tris saline, 0.02% sodium azide, pH7.3 with 0.5% bovine serum albumin.

Aliquot and store at -20°C. Minimize freezing and thawing.

Applications Tested

Peptide ELISA: antibody detection limit dilution 1:32000.

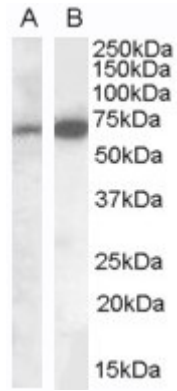
Western blot: Approx 70kDa band observed in Human Brain (Cerebellum) lysates (calculated MW of 42.8kDa according to NP_660339.1). The observed molecular weight corresponds to findings with EB08040, a product of different design reacting to a different part of the same protein. Recommended concentration: 0.03-0.1µg/ml. Primary incubation was 1 hour.

IHC: Paraffin embedded Human Spleen and Liver. Recommended concentration: 2.5µg/ml.

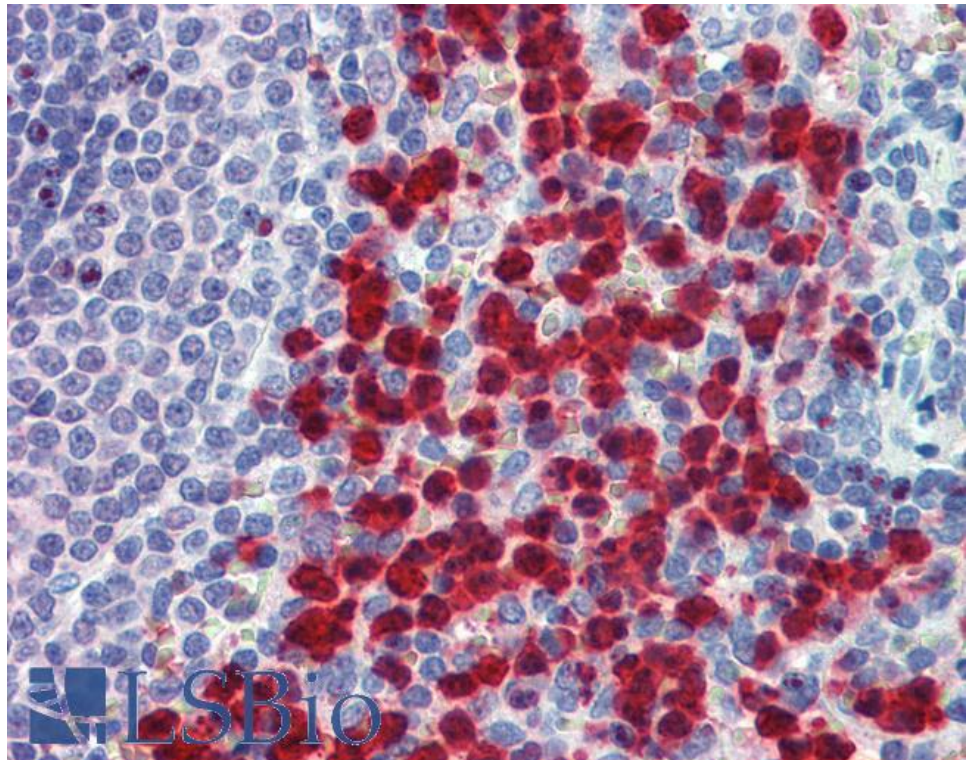
Species Reactivity

Tested: Human

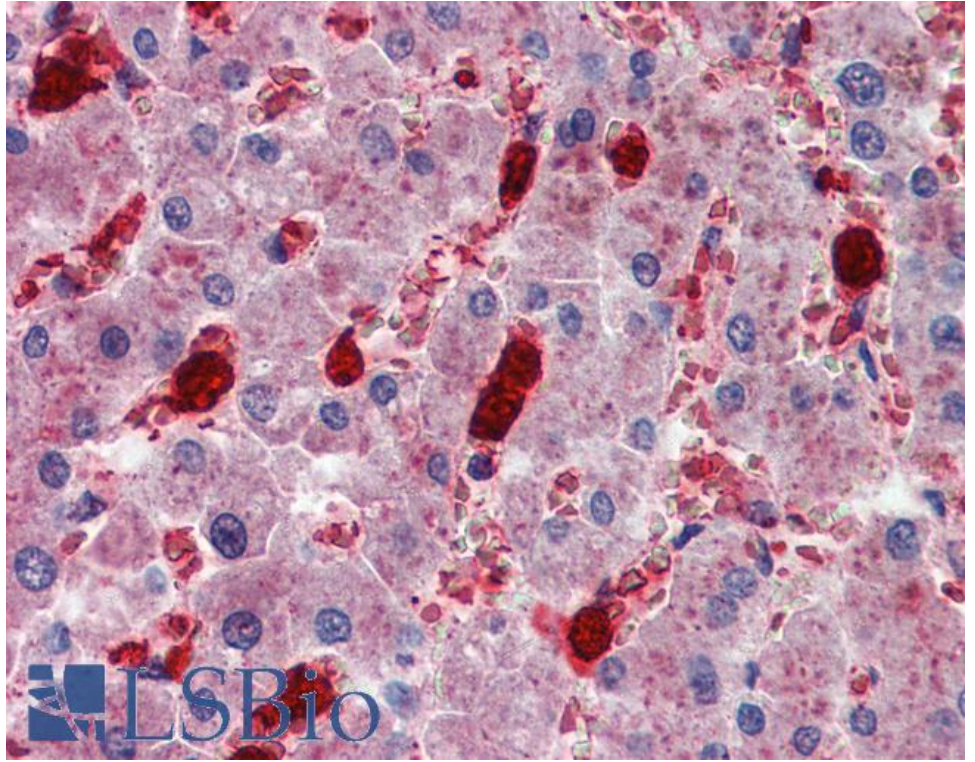
Expected from sequence similarity: Human, Mouse, Rat, Dog



Staining of Human Brain (Cerebellum) lysate (35µg protein in RIPA buffer). A) EB08040 (0.1µg/ml) and B) EB08194 (0.05µg/ml). Detected by chemiluminescence.



EB08194 (2.5µg/ml) staining of paraffin embedded Human Spleen. Steamed antigen retrieval with citrate buffer pH 6, AP-staining.



EB08194 (2.5µg/ml) staining of paraffin embedded Human Liver. Steamed antigen retrieval with citrate buffer pH 6, AP-staining.