

UK Office

Everest Biotech Ltd

Cherwell Innovation Centre
77 Heyford Park
Upper Heyford
Oxfordshire
OX25 5HD
UK

Enquiries:

info@everestbiotech.com

Sales:

sales@everestbiotech.com

Tech support:

support@everestbiotech.com

Tel: +44 (0)1869 238326

www.everestbiotech.com

**Research Use Only. Not for
diagnostic or therapeutic use.**

EB05158 - Goat Anti-BIF-1 / SH3GLB1 Antibody

Size: 100µg specific antibody in 200µl



Target Protein

Principal Names: SH3GLB1, Bif-1, SH3-domain GRB2-like endophilin B1, CGI-61, KIAA0491, endophilin B1, Bax-interacting factor 1, SH3-containing protein SH3GLB1, SH3-domain, GRB2-like, endophilin B1, SH3-containing protein SH3GLB1 CGI-61 protein endophilin B1, dJ612B15.2

Official Symbol: SH3GLB1

Accession Number(s): NP_057093.1

Human GeneID(s): [51100](#)

Non-Human GeneID(s): 54673 (mouse)

Immunogen

Peptide with sequence C-QKGKVPITYLELLN, from the C Terminus of the protein sequence according to NP_057093.1.

Please note the [peptide](#) is available for sale.

Purification and Storage

Purified from goat serum by ammonium sulphate precipitation followed by antigen affinity chromatography using the immunizing peptide.

Supplied at 0.5 mg/ml in Tris saline, 0.02% sodium azide, pH7.3 with 0.5% bovine serum albumin.

Aliquot and store at -20°C. Minimize freezing and thawing.

Applications Tested

Peptide ELISA: antibody detection limit dilution 1:32000.

Western blot: Approx 38kDa band observed in lysates of Human T cell line Jurkat and in Human Lung and Placenta (calculated MW of 40.8kDa according to NP_057093.1).

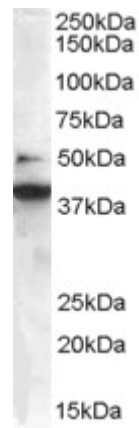
Recommended concentration: 0.3-1.0 µg/ml. A minor band of unknown identity was also consistently observed at 50kDa in Jurkat and Placenta. This band was successfully blocked by incubation with the immunising peptide.

IHC: Paraffin embedded Human Colon. Recommended concentration: 2.5µg/ml.

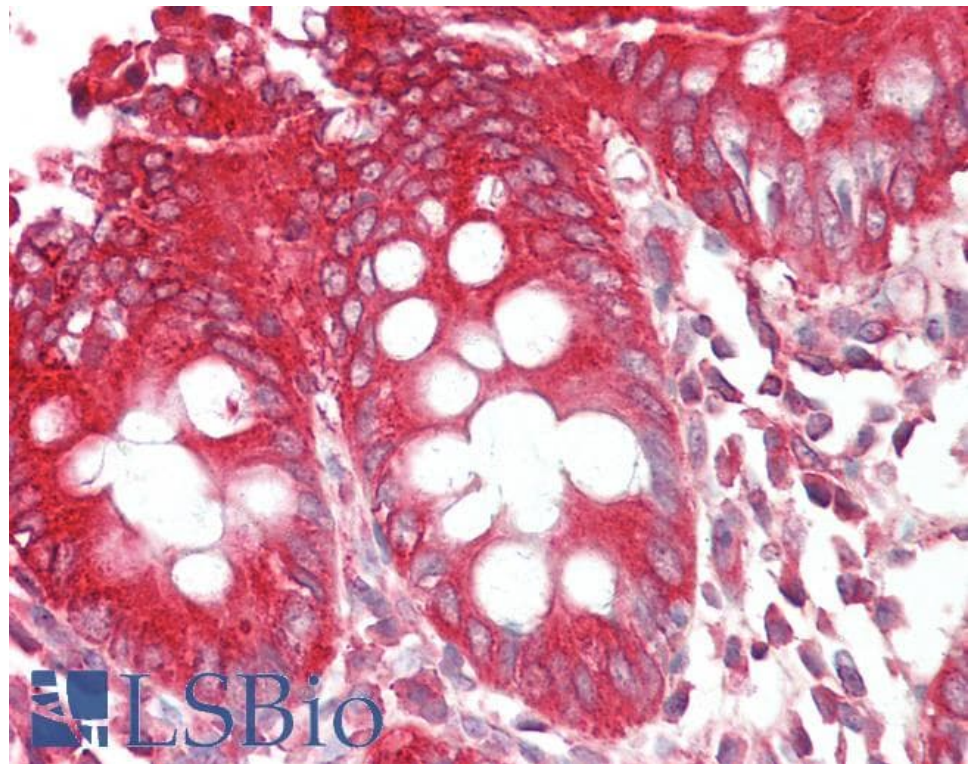
Species Reactivity

Tested: Human

Expected from sequence similarity: Human, Mouse, Rat, Dog, Cow



EB05158 staining (0.3 μ g/ml) of Jurkat lysate (RIPA buffer, 35 μ g total protein per lane). Primary incubated for 1 hour. Detected by chemiluminescence.



EB05158 (2.5 μ g/ml) staining of paraffin embedded Human Colon. Steamed antigen retrieval with citrate buffer pH 6, AP-staining.