

## UK Office

### Everest Biotech Ltd

Cherwell Innovation Centre  
77 Heyford Park  
Upper Heyford  
Oxfordshire  
OX25 5HD  
UK

Enquiries:

[info@everestbiotech.com](mailto:info@everestbiotech.com)

Sales:

[sales@everestbiotech.com](mailto:sales@everestbiotech.com)

Tech support:

[support@everestbiotech.com](mailto:support@everestbiotech.com)

Tel: +44 (0)1869 238326

[www.everestbiotech.com](http://www.everestbiotech.com)

**Research Use Only. Not for  
diagnostic or therapeutic use.**

## EB08117 - Goat Anti-BDNF Antibody

Size: 100µg specific antibody in 200µl



### Target Protein

**Principal Names:** BDNF, brain-derived neurotrophic factor, MGC34632, neurotrophin

**Official Symbol:** BDNF

**Accession Number(s):** NP\_001700.2; NP\_001700.2; NP\_733928.1; NP\_733929.1;  
NP\_733930.1; NP\_733931.1

**Human GeneID(s):** [627](#)

**Important Comments:** This antibody is expected to recognise all reported isoforms  
(NP\_001700.2; NP\_001700.2; NP\_733928.1; NP\_733929.1; NP\_733930.1;  
NP\_733931.1)

### Immunogen

Peptide with sequence ETKCNPMGYTKE, from the internal region of the protein  
sequence according to NP\_001700.2; NP\_001700.2; NP\_733928.1; NP\_733929.1;  
NP\_733930.1; NP\_733931.1.

Please note the [peptide](#) is available for sale.

### Purification and Storage

Purified from goat serum by ammonium sulphate precipitation followed by antigen affinity  
chromatography using the immunizing peptide.

Supplied at 0.5 mg/ml in Tris saline, 0.02% sodium azide, pH7.3 with 0.5% bovine serum  
albumin.

Aliquot and store at -20°C. Minimize freezing and thawing.

### Applications Tested

**Peptide ELISA:** antibody detection limit dilution 1:4000.

**IHC:** Paraffin embedded Rat Cerebral Cortex. Recommended concentration: 5µg/ml.

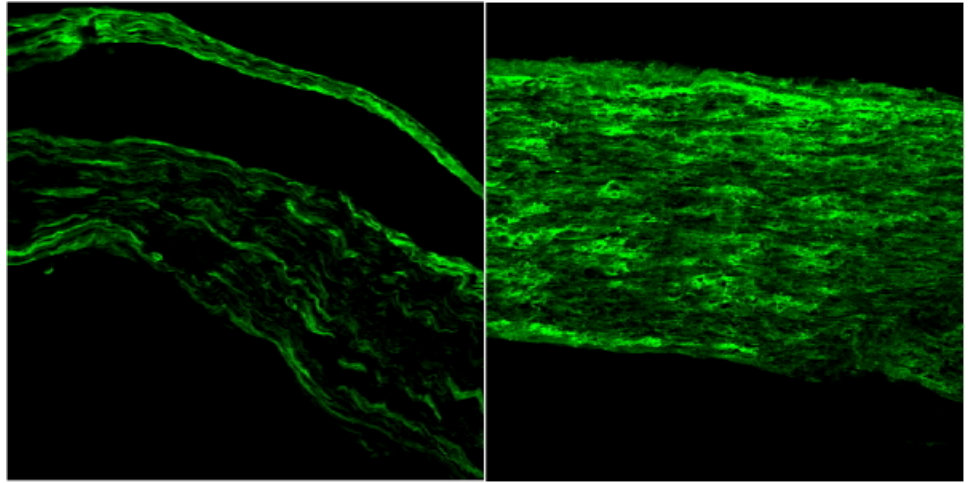
Paraffin embedded Human Brain (Cortex). Recommended concentration: 3.75µg/ml.

**Immunocytochemistry:** Frozen sections of Mouse sciatic nerve shows intensified staining  
after injury, consistent with the literature (Tonra et al, J Neurosci. 1998 Jun  
1;18(11):4374-83. PMID: 9592114). Recommended concentration, 1-3µg/ml. Based on  
the mouse data, this antibody is endorsed by pAbmAbs  
(<http://pabmabs.com/wordpress/?p=1596>). In paraffin embedded Rat Cerebral Cortex and  
Rat Hippocampus show cytoplasm staining in neurons. Recommended concentration:  
3-5ug/ml.

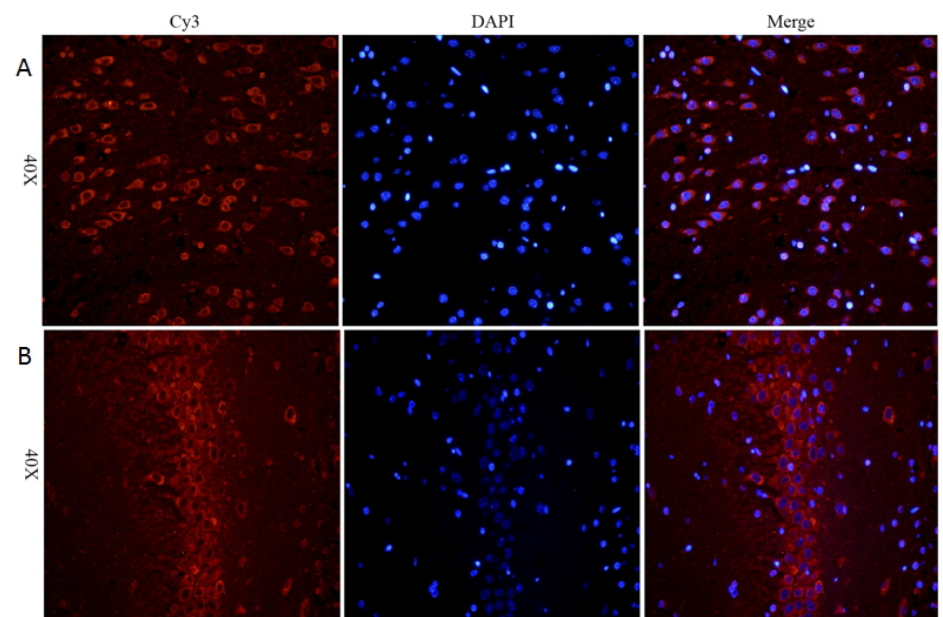
### Species Reactivity

**Tested:** Human, Mouse, Rat

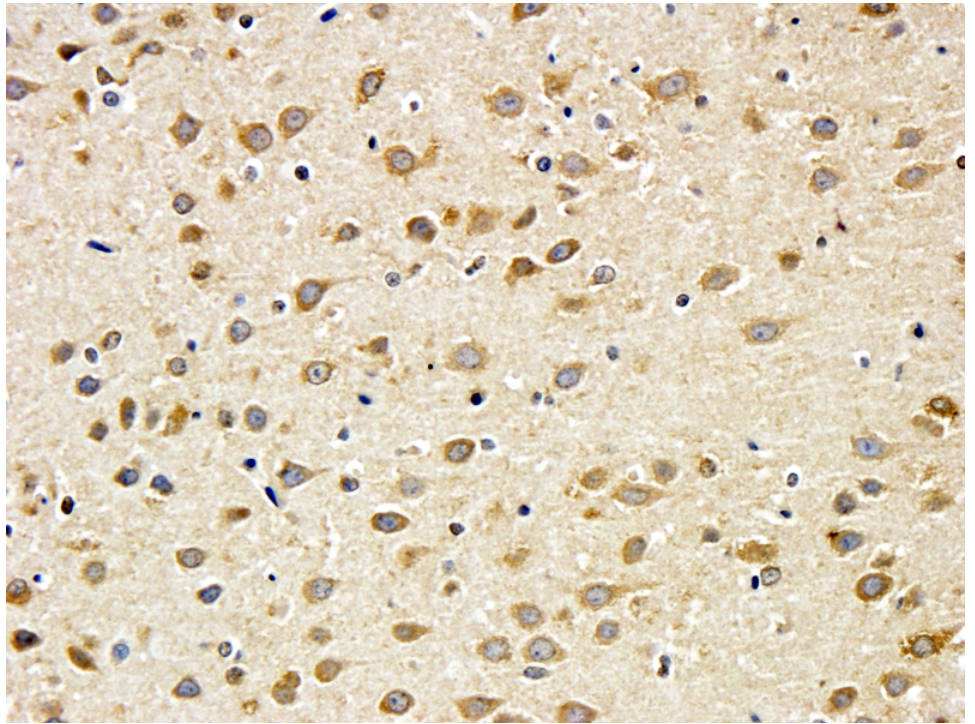
**Expected from sequence similarity:** Human, Mouse, Rat, Dog



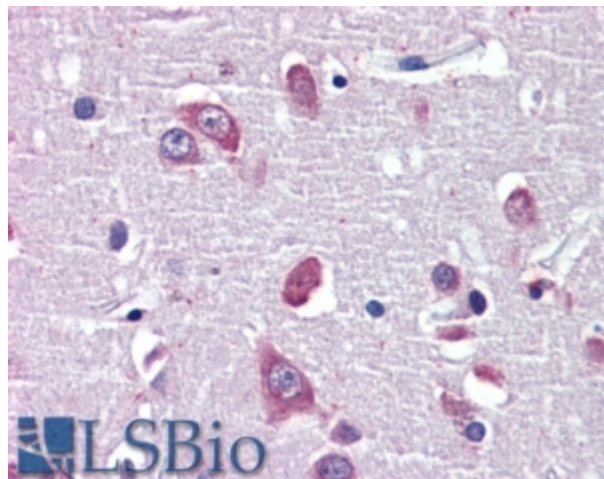
EB08117 (1µg/ml) staining of PFA-perfused cryosection of Mouse sciatic nerve (left) and injured sciatic nerve (right). Alexa 488-staining. Data obtained from Simon Glerup, Department of Biomedicine Aarhus University, Denmark.



EB08117 (5µg/ml) staining of paraffin embedded Rat Cerebral Cortex (A) and Rat Hippocampus (B), CRY-staining with DAPI nuclear counter stain in blue. Antigen retrieval with citrate buffer pH 6 at 95-98C.



EB08117 (5ug/ml) staining of paraffin embedded Rat Cerebral Cortex. Antigen retrieval with citrate buffer pH 6 at 95-98C, DAB-staining.



EB08117 (3.75 $\mu$ g/ml) staining of paraffin embedded Human Cortex. Steamed antigen retrieval with citrate buffer pH 6, AP-staining.