

## UK Office

### Everest Biotech Ltd

Cherwell Innovation Centre  
77 Heyford Park  
Upper Heyford  
Oxfordshire  
OX25 5HD  
UK

Enquiries:

[info@everestbiotech.com](mailto:info@everestbiotech.com)

Sales:

[sales@everestbiotech.com](mailto:sales@everestbiotech.com)

Tech support:

[support@everestbiotech.com](mailto:support@everestbiotech.com)

Tel: +44 (0)1869 238326

[www.everestbiotech.com](http://www.everestbiotech.com)

**Research Use Only. Not for  
diagnostic or therapeutic use.**

## EB06071 - Goat Anti-BAP / SIL1 Antibody

Size: 100µg specific antibody in 200µl



### Target Protein

**Principal Names:** SIL1, BAP, endoplasmic reticulum chaperone SIL1, homolog of yeast, BiP-associated protein, SIL1 homolog, endoplasmic reticulum chaperone (*S. cerevisiae*), MSS, ULG5, SIL1 protein

**Official Symbol:** SIL1

**Accession Number(s):** NP\_071909.1; NP\_001032722.1

**Human GeneID(s):** [64374](#)

**Important Comments:** Variants (NP\_071909.1; NP\_001032722.1) encode the same isoform.

### Immunogen

Peptide with sequence C-ELLGSVNSLLKELR, from the C Terminus of the protein sequence according to NP\_071909.1; NP\_001032722.1.

Please note the [peptide](#) is available for sale.

### Purification and Storage

Purified from goat serum by ammonium sulphate precipitation followed by antigen affinity chromatography using the immunizing peptide.

Supplied at 0.5 mg/ml in Tris saline, 0.02% sodium azide, pH7.3 with 0.5% bovine serum albumin.

Aliquot and store at -20°C. Minimize freezing and thawing.

### Applications Tested

**Peptide ELISA:** antibody detection limit dilution 1:8000.

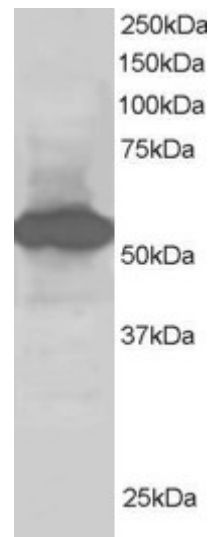
**Western blot:** Approx 55-60 kDa band observed in Human Liver and Kidney extracts (predicted MW of 53kDa according to NP\_071909.1). Recommended concentration: 1-2µg/ml.

**IHC:** Paraffin embedded Human Liver and Testis. Recommended concentration: 5µg/ml.

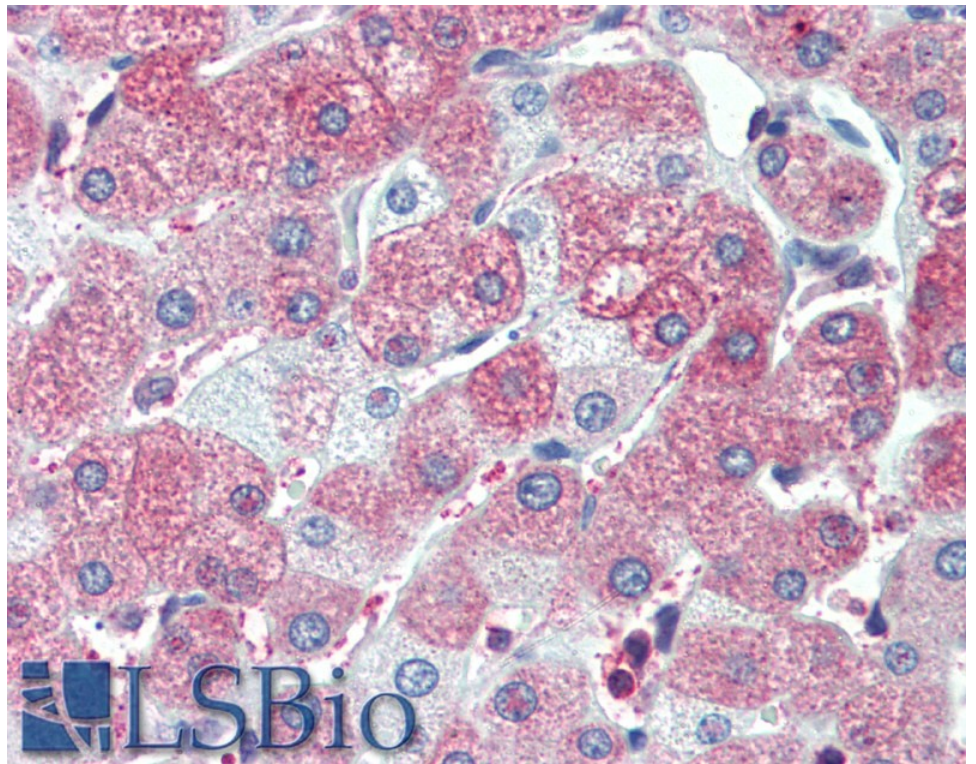
### Species Reactivity

**Tested:** Human

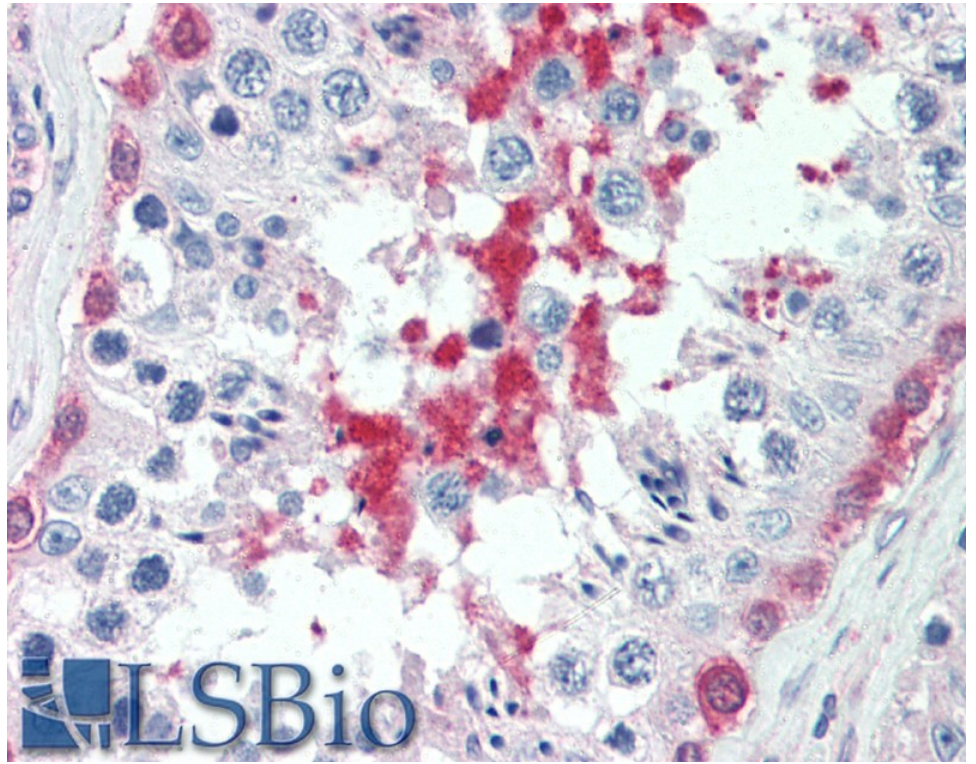
**Expected from sequence similarity:** Human



EB06071 staining (1µg/ml) of Human Kidney lysate (RIPA buffer, 30µg total protein per lane). Primary incubated for 1 hour. Detected by chemiluminescence.



EB06071 (5µg/ml) staining of paraffin embedded Human Liver. Steamed antigen retrieval with citrate buffer pH 6, AP-staining.



EB06071 (5µg/ml) staining of paraffin embedded Human Testis. Steamed antigen retrieval with citrate buffer pH 6, AP-staining.