

UK Office

Everest Biotech Ltd

Cherwell Innovation Centre
77 Heyford Park
Upper Heyford
Oxfordshire
OX25 5HD
UK

Enquiries:

info@everestbiotech.com

Sales:

sales@everestbiotech.com

Tech support:

support@everestbiotech.com

Tel: +44 (0)1869 238326

www.everestbiotech.com

**Research Use Only. Not for
diagnostic or therapeutic use.**

EB08096 - Goat Anti-BAG3 Antibody

Size: 100µg specific antibody in 200µl



Target Protein

Principal Names: BAG3, BCL2-associated athanogene 3, BAG-3, BIS, CAIR-1, MGC104307, BAG-family molecular chaperone regulator-3, BCL2-binding athanogene 3, Bcl-2-binding protein, docking protein CAIR-1

Official Symbol: BAG3

Accession Number(s): NP_004272.2

Human GeneID(s): [9531](#)

Immunogen

Peptide with sequence C-KNAGNAEDPHTE, from the internal region of the protein sequence according to NP_004272.2.

Please note the [peptide](#) is available for sale.

Purification and Storage

Purified from goat serum by ammonium sulphate precipitation followed by antigen affinity chromatography using the immunizing peptide.

Supplied at 0.5 mg/ml in Tris saline, 0.02% sodium azide, pH7.3 with 0.5% bovine serum albumin.

Aliquot and store at -20°C. Minimize freezing and thawing.

Applications Tested

Peptide ELISA: antibody detection limit dilution 1:16000.

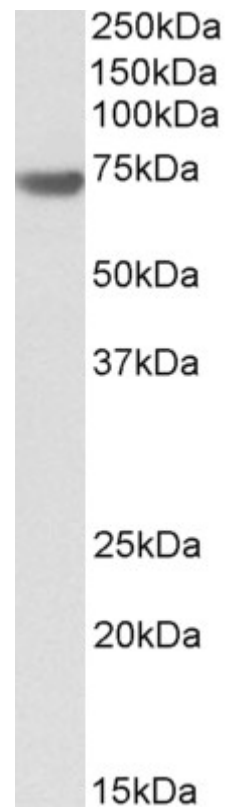
Western blot: Approx 70kDa band observed in Human Pancreas lysates (calculated MW of 61.6kDa according to NP_004272.2). Recommended concentration: 0.1-0.3µg/ml. Primary incubation was 1 hour.

IHC: Paraffin embedded Human Brain (Cortex). Recommended concentration: 5µg/ml.

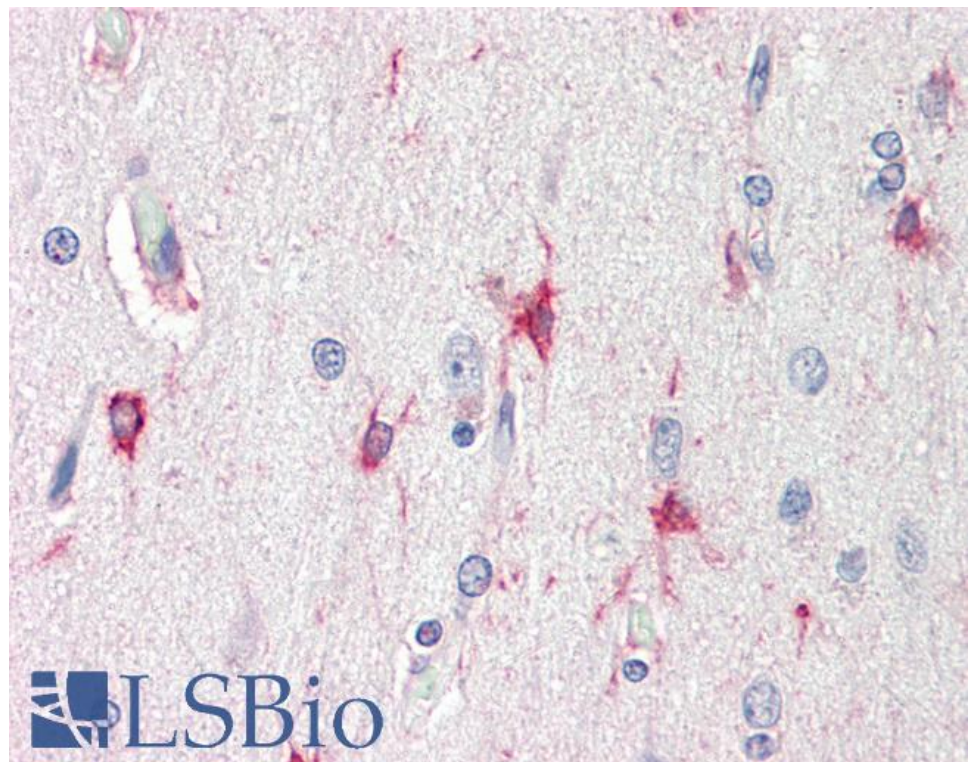
Species Reactivity

Tested: Human

Expected from sequence similarity: Human



EB08096 (0.1µg/ml) staining of Human Pancreas lysate (35µg protein in RIPA buffer). Detected by chemiluminescence.



EB08096 (5µg/ml) staining of paraffin embedded Human Cortex. Steamed antigen retrieval with citrate buffer pH 6, AP-staining.