

UK Office

Everest Biotech Ltd

Cherwell Innovation Centre
77 Heyford Park
Upper Heyford
Oxfordshire
OX25 5HD
UK

Enquiries:

info@everestbiotech.com

Sales:

sales@everestbiotech.com

Tech support:

support@everestbiotech.com

Tel: +44 (0)1869 238326

www.everestbiotech.com

**Research Use Only. Not for
diagnostic or therapeutic use.**

EB06967 - Goat Anti-BAALC Antibody

Size: 100µg specific antibody in 200µl



Target Protein

Principal Names: BAALC, brain and acute leukemia, cytoplasmic, HGNC:14333, FLJ12015

Official Symbol: BAALC

Accession Number(s): NP_079088.1

Human GeneID(s): [79870](#)

Non-Human GeneID(s): 118452 (mouse), 140720 (rat)

Important Comments: This antibody is expected to recognise isoform 1 (NP_079088.1) only.

Immunogen

Peptide with sequence C-KQNGLTTEAKRDAK, from the internal region of the protein sequence according to NP_079088.1.

Please note the [peptide](#) is available for sale.

Purification and Storage

Purified from goat serum by ammonium sulphate precipitation followed by antigen affinity chromatography using the immunizing peptide.

Supplied at 0.5 mg/ml in Tris saline, 0.02% sodium azide, pH7.3 with 0.5% bovine serum albumin.

Aliquot and store at -20°C. Minimize freezing and thawing.

Applications Tested

Peptide ELISA: antibody detection limit dilution 1:64000.

Western blot: Approx 18kDa band observed in mouse brain lysates (calculated MW of 15.6kDa according to human NP_079088.1 and of 15.5kDa according to mouse NP_542371.1. Recommended concentration: 0.03-0.1µg/ml. An approx, 48kDa band was consistently observed in both Human and Mouse Brain lysates. This band was successfully blocked by incubation with the immunising peptide. We would appreciate any feedback from people in the field - have any such results been reported with other antibodies/lysates? Have any further splice variants/modified forms been reported?

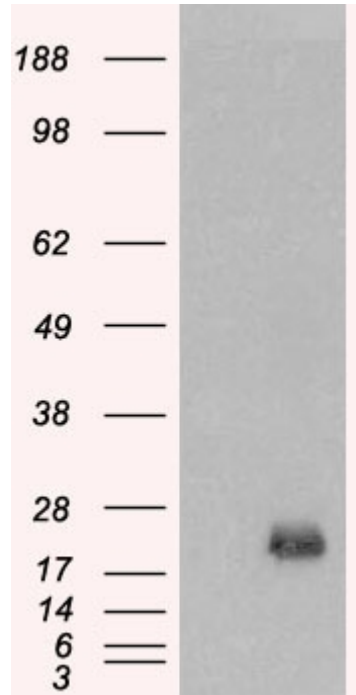
Species Reactivity

Tested: Human, Mouse

Expected from sequence similarity: Human, Mouse, Rat, Pig



EB06967 (0.03µg/ml) staining of mouse brain lysate (35µg protein in RIPA buffer). Primary incubation was 1 hour. Detected by chemiluminescence.



HEK293 overexpressing BAALC (RC203701) and probed with EB06967 (mock transfection in first lane), tested by Origene.