

UK Office

Everest Biotech Ltd

Cherwell Innovation Centre
77 Heyford Park
Upper Heyford
Oxfordshire
OX25 5HD
UK

Enquiries:

info@everestbiotech.com

Sales:

sales@everestbiotech.com

Tech support:

support@everestbiotech.com

Tel: +44 (0)1869 238326

www.everestbiotech.com

**Research Use Only. Not for
diagnostic or therapeutic use.**

EB08785 - Goat Anti-AVPR1B Antibody

Size: 100µg specific antibody in 200µl



Target Protein

Principal Names: AVPR1B, arginine vasopressin receptor 1B, AVPR3, antidiuretic hormone receptor 1B, arginine vasopressin receptor 3, pituitary vasopressin receptor 3, vasopressin V1B receptor

Official Symbol: AVPR1B

Accession Number(s): NP_000698.1

Human GeneID(s): [553](#)

Immunogen

Peptide with sequence C-PRDLELADGEGTAE, from the C Terminus of the protein sequence according to NP_000698.1.

Please note the [peptide](#) is available for sale.

Purification and Storage

Purified from goat serum by ammonium sulphate precipitation followed by antigen affinity chromatography using the immunizing peptide.

Supplied at 0.5 mg/ml in Tris saline, 0.02% sodium azide, pH7.3 with 0.5% bovine serum albumin.

Aliquot and store at -20°C. Minimize freezing and thawing.

Applications Tested

Peptide ELISA: antibody detection limit dilution 1:32000.

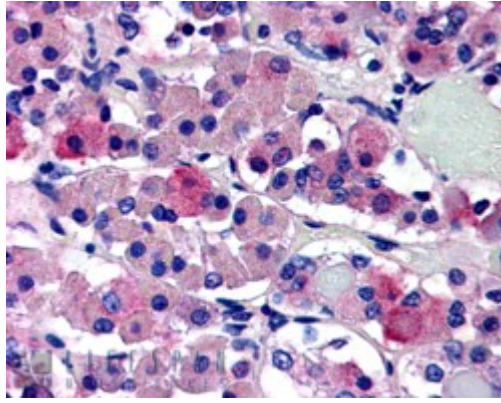
Western blot: Approx. 170kDa band observed in Human Brain (Substantia Nigra) lysates (calculated MW of 47.0kDa according to NP_000698.1). The observed molecular weight corresponds to findings with EB08786, a product of different design reacting to the Mouse protein. Recommended concentration: 0.05-0.2µg/ml.

IHC: In paraffin embedded Human Pituitary shows bright cytoplasm staining of a few active secretory cells in the anterior pituitary. Recommended concentration, 5-10µg/ml.

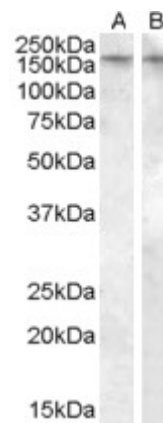
Species Reactivity

Tested: Human

Expected from sequence similarity: Human



EB08785 (5 μ g/ml) staining of paraffin embedded Human Anterior Pituitary Gland. Steamed antigen retrieval with citrate buffer pH 6, AP-staining.



EB08785 (0.5 μ g/ml) staining of Human Amygdala lysate (35 μ g protein in RIPA buffer) in lane A and EB08786 (0.05 μ g/ml) staining of Rat Brain lysate (35 μ g protein in RIPA buffer) in lane B . Primary incubation was 1 hour. Detected by chemiluminescence.