

UK Office

Everest Biotech Ltd

Cherwell Innovation Centre
77 Heyford Park
Upper Heyford
Oxfordshire
OX25 5HD
UK

Enquiries:

info@everestbiotech.com

Sales:

sales@everestbiotech.com

Tech support:

support@everestbiotech.com

Tel: +44 (0)1869 238326

www.everestbiotech.com

**Research Use Only. Not for
diagnostic or therapeutic use.**

EB09223 - Goat Anti-ATG4D Antibody

Size: 100µg specific antibody in 200µl



Target Protein

Principal Names: ATG4D, ATG4 autophagy related 4 homolog D (S. cerevisiae), APG4-D, APG4D, AUTL4, APG4 autophagy 4 homolog D, AUT-like 4, cysteine endopeptidase, autophagin-4, autophagy-related cysteine endopeptidase 4, cysteine protease involved in autophagy

Official Symbol: ATG4D

Accession Number(s): NP_116274.3

Human GeneID(s): [84971](#)

Non-Human GeneID(s): 235040 (mouse), 686505 (rat)

Immunogen

Peptide with sequence CSQLAQPTLRLPRT, from the internal region (near C terminus) of the protein sequence according to NP_116274.3.

Please note the [peptide](#) is available for sale.

Purification and Storage

Purified from goat serum by ammonium sulphate precipitation followed by antigen affinity chromatography using the immunizing peptide.

Supplied at 0.5 mg/ml in Tris saline, 0.02% sodium azide, pH7.3 with 0.5% bovine serum albumin.

Aliquot and store at -20°C. Minimize freezing and thawing.

Applications Tested

Peptide ELISA: antibody detection limit dilution 1:32000.

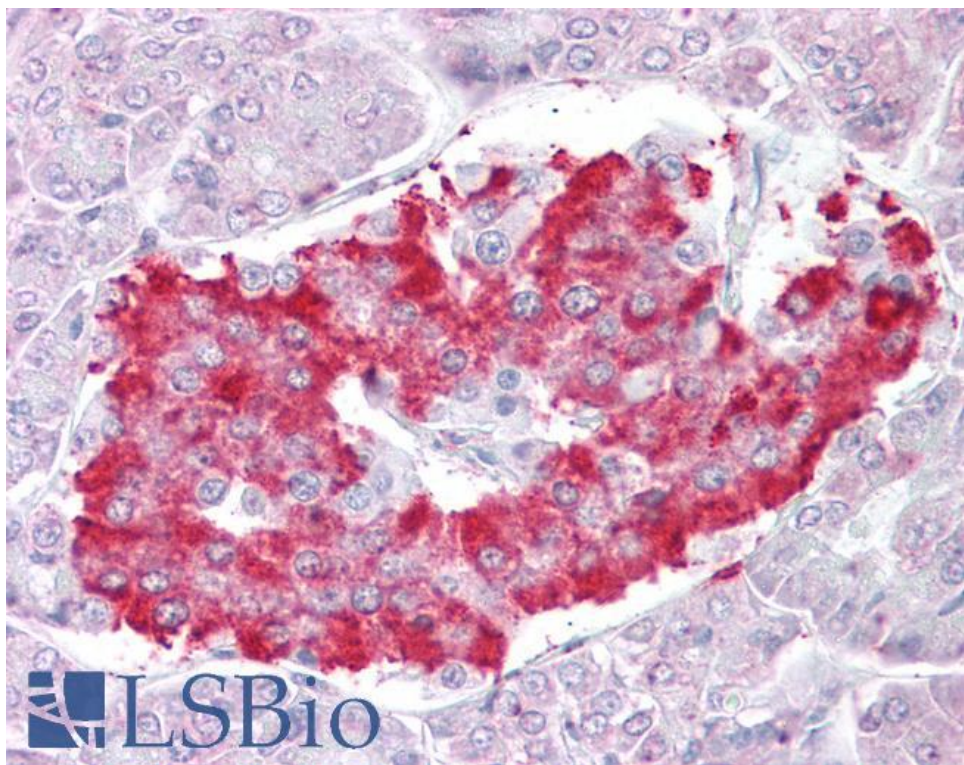
Western blot: Preliminary experiments gave an approx. 26kDa band in Human Skeletal Muscle lysates after 1µg/ml antibody staining. Please note that currently we cannot find an explanation in the literature for the band we observe given the calculated size of 52.9kDa according to NP_116274.3. The 26kDa band was successfully blocked by incubation with the immunizing peptide.

IHC: Paraffin embedded Human Pancreas. Recommended concentration: 2.5µg/ml.

Species Reactivity

Tested: Human

Expected from sequence similarity: Human, Mouse, Rat, Dog, Pig



EB09223 (2.5µg/ml) staining of paraffin embedded Human Pancreas. Steamed antigen retrieval with citrate buffer pH 6, AP-staining.