

UK Office

Everest Biotech Ltd

Cherwell Innovation Centre
77 Heyford Park
Upper Heyford
Oxfordshire
OX25 5HD
UK

Enquiries:

info@everestbiotech.com

Sales:

sales@everestbiotech.com

Tech support:

support@everestbiotech.com

Tel: +44 (0)1869 238326

www.everestbiotech.com

**Research Use Only. Not for
diagnostic or therapeutic use.**

EB05244 - Goat Anti-ATF7 Antibody

Size: 100µg specific antibody in 200µl



Target Protein

Principal Names: ATF7, ATFA, activating transcription factor 7, MGC57182

Official Symbol: ATF7

Accession Number(s): NP_001123531.1; NP_006847.1; NP_001123532.1

Human GenelD(s): [11016](#)

Important Comments: This antibody is expected to recognise all three reported isoforms (NP_001123531.1, NP_006847.1 and NP_001123532.1).

Immunogen

Peptide with sequence C-HVIMTPQSQSAGR, from the C Terminus of the protein sequence according to NP_001123531.1; NP_006847.1; NP_001123532.1.

Please note the [peptide](#) is available for sale.

Purification and Storage

Purified from goat serum by ammonium sulphate precipitation followed by antigen affinity chromatography using the immunizing peptide.

Supplied at 0.5 mg/ml in Tris saline, 0.02% sodium azide, pH7.3 with 0.5% bovine serum albumin.

Aliquot and store at -20°C. Minimize freezing and thawing.

Applications Tested

Peptide ELISA: antibody detection limit dilution 1:16000.

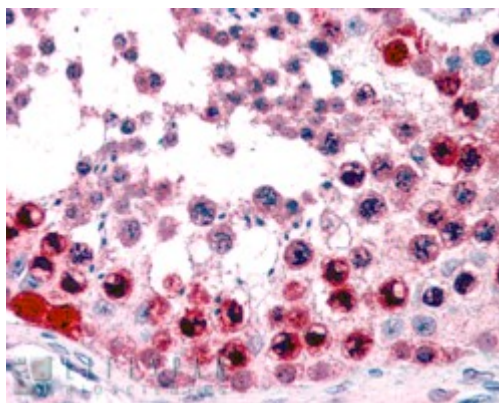
Western blot: Approx 35kDa band seen in HeLa cell lysates. Recommended for use at 0.5-2µg/ml. Please note the band size is in agreement with previous experimental data (J Biol Chem 2001 Apr 27;276(17):13718-26).

IHC: In paraffin embedded Human Testis shows staining of select spermatocytes in Human Testis. Recommended concentration, 3-5µg/ml.

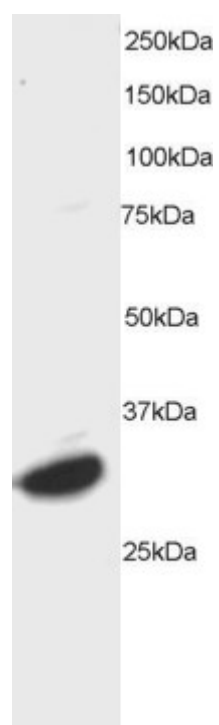
Species Reactivity

Tested: Human

Expected from sequence similarity: Human, Rat, Dog, Cow



EB05244 (3.8µg/ml) staining of paraffin embedded Human Testis. Steamed antigen retrieval with citrate buffer pH 6, AP-staining.



EB05244 staining (0.5µg/ml) of HeLa lysate (RIPA buffer, 35µg total protein per lane). Primary incubated for 1 hour. Detected by western blot using chemiluminescence.