



## UK Office

### Everest Biotech Ltd

Cherwell Innovation Centre  
77 Heyford Park  
Upper Heyford  
Oxfordshire  
OX25 5HD  
UK

Enquiries:

[info@everestbiotech.com](mailto:info@everestbiotech.com)

Sales:

[sales@everestbiotech.com](mailto:sales@everestbiotech.com)

Tech support:

[support@everestbiotech.com](mailto:support@everestbiotech.com)

Tel: +44 (0)1869 238326

[www.everestbiotech.com](http://www.everestbiotech.com)

**Research Use Only. Not for  
diagnostic or therapeutic use.**

## EB06745-B - Goat Anti-Arrestin beta 2, Biotinylated Antibody

Size: 100µg specific antibody in 200µl



### Target Protein

**Principal Names:** ARRB2, arrestin, beta 2, ARB2, ARR2, BARR2, arrestin 3, arrestin beta-2, arrestin beta 2, beta-arrestin 2, DKFZp686L0365, HGNC:712

**Official Symbol:** ARRB2

**Accession Number(s):** NP\_004304.1; NP\_945355.1; NP\_001244257.1;  
NP\_001244259.1; NP\_001244260.1

**Human GeneID(s):** [409](#)

**Non-Human GeneID(s):** 216869 (mouse), 25388 (rat)

**Important Comments:** This antibody is expected to recognise both reported isoforms 1, 2, 3, 5 and 6 (NP\_004304.1; NP\_945355.1; NP\_001244257.1; NP\_001244259.1; NP\_001244260.1). No crossreactivity is expected with Arrestin beta 1.

### Immunogen

Peptide with sequence C-HDHIPLPRPQS., from the internal region of the protein sequence according to NP\_004304.1; NP\_945355.1; NP\_001244257.1; NP\_001244259.1; NP\_001244260.1.

Please note the [peptide](#) is available for sale.

### Purification and Storage

Purified from goat serum by ammonium sulphate precipitation followed by antigen affinity chromatography using the immunizing peptide.

Supplied at 0.5 mg/ml in Tris saline, 0.02% sodium azide, pH7.3 with 0.5% bovine serum albumin.

Aliquot and store at -20°C. Minimize freezing and thawing.

### Applications Tested

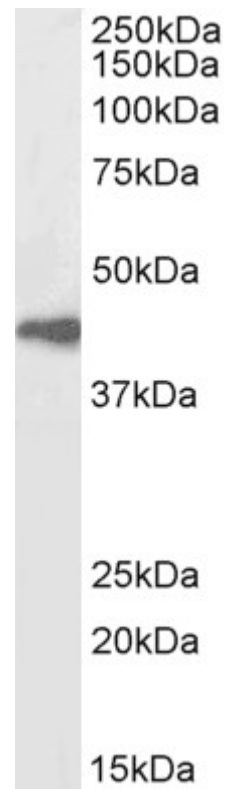
**Peptide ELISA:** antibody detection limit dilution 1:128000.

**Western blot:** Approx 45kDa band observed in Human Spleen lysates (calculated MW of 46.1kDa according to NP\_004304.1). See non-biotinylated parental product's datasheet for further QC data. Please note that the batch that produced this biotinylated product is different from the batch currently on sale. Recommended concentration: 1-3µg/ml.

### Species Reactivity

**Tested:** Human, Mouse, Rat

**Expected from sequence similarity:** Human, Mouse, Rat



Biotinylated EB06745 (1µg/ml) staining of Human Spleen lysate (35µg protein in RIPA buffer), exactly mirroring its parental non-biotinylated product. Primary incubation was 1 hour. Detected by chemiluminescence, using streptavidin-HRP and using NAP blocker as a substitute for skimmed milk.