

## UK Office

### Everest Biotech Ltd

Cherwell Innovation Centre  
77 Heyford Park  
Upper Heyford  
Oxfordshire  
OX25 5HD  
UK

Enquiries:

[info@everestbiotech.com](mailto:info@everestbiotech.com)

Sales:

[sales@everestbiotech.com](mailto:sales@everestbiotech.com)

Tech support:

[support@everestbiotech.com](mailto:support@everestbiotech.com)

Tel: +44 (0)1869 238326

[www.everestbiotech.com](http://www.everestbiotech.com)

**Research Use Only. Not for  
diagnostic or therapeutic use.**

## EB05433 - Goat Anti-ARPC2 Antibody

Size: 100µg specific antibody in 200µl



### Target Protein

**Principal Names:** ARPC2, actin related protein 2/3 complex, subunit 2, 34kDa, ARC34, PRO2446, p34-Arc, PNAS-139, ARP2/3 protein complex subunit 34, actin related protein 2/3 complex subunit 2

**Official Symbol:** ARPC2

**Accession Number(s):** NP\_005722.1; NP\_690601.1

**Human GeneID(s):** [10109](#)

**Non-Human GeneID(s):** 76709 (mouse)

**Important Comments:** The reported variants NP\_005722.1 and NP\_690601.1 represent identical protein.

### Immunogen

Peptide with sequence C-EMKTITGKTFSSR, from the C Terminus of the protein sequence according to NP\_005722.1; NP\_690601.1.

Please note the [peptide](#) is available for sale.

### Purification and Storage

Purified from goat serum by ammonium sulphate precipitation followed by antigen affinity chromatography using the immunizing peptide.

Supplied at 0.5 mg/ml in Tris saline, 0.02% sodium azide, pH7.3 with 0.5% bovine serum albumin.

Aliquot and store at -20°C. Minimize freezing and thawing.

### Applications Tested

**Peptide ELISA:** antibody detection limit dilution 1:32000.

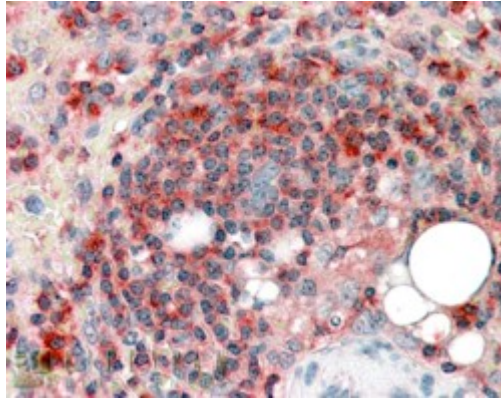
**Western blot:** Approx 33-34kDa band observed in HeLa and Human Skeletal Muscle lysates (predicted MW of 34kDa according to NP\_005722). Recommended for use at 0.1-0.5µg/ml.

**IHC:** In paraffin embedded Human Spleen shows cytoplasm staining in some splenocytes in and around a T-cell area. Recommended concentration, 3-5µg/ml.

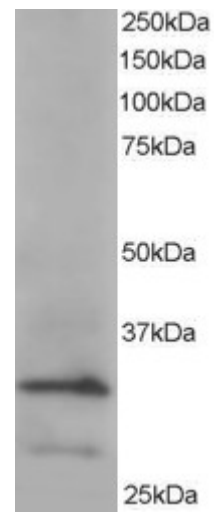
### Species Reactivity

**Tested:** Human

**Expected from sequence similarity:** Human, Mouse, Rat, Dog, Cow



EB05433 (3.8µg/ml) staining of paraffin embedded Human Spleen. Steamed antigen retrieval with citrate buffer pH 6, AP-staining.



EB05433 staining (0.2µg/ml) of HeLa lysate (RIPA buffer, 35µg total protein per lane). Primary incubated for 1 hour. Detected by western blot using chemiluminescence.