

UK Office

Everest Biotech Ltd

Cherwell Innovation Centre
77 Heyford Park
Upper Heyford
Oxfordshire
OX25 5HD
UK

Enquiries:

info@everestbiotech.com

Sales:

sales@everestbiotech.com

Tech support:

support@everestbiotech.com

Tel: +44 (0)1869 238326

www.everestbiotech.com

**Research Use Only. Not for
diagnostic or therapeutic use.**

EB05433-T - Goat Anti-ARPC2 Antibody - Trial

Size: 20µg specific antibody in 40µl



Target Protein

Principal Names: ARPC2, actin related protein 2/3 complex, subunit 2, 34kDa, ARC34, PRO2446, p34-Arc, PNAS-139, ARP2/3 protein complex subunit 34, actin related protein 2/3 complex subunit 2

Official Symbol: ARPC2

Accession Number(s): NP_005722.1; NP_690601.1

Human GeneID(s): [10109](#)

Non-Human GeneID(s): 76709 (mouse)

Important Comments: The reported variants NP_005722.1 and NP_690601.1 represent identical protein.

Immunogen

Peptide with sequence C-EMKTITGKTFSSR, from the C Terminus of the protein sequence according to NP_005722.1; NP_690601.1.

Please note the [peptide](#) is available for sale.

Purification and Storage

Purified from goat serum by ammonium sulphate precipitation followed by antigen affinity chromatography using the immunizing peptide.

Supplied at 0.5 mg/ml in Tris saline, 0.02% sodium azide, pH7.3 with 0.5% bovine serum albumin.

Aliquot and store at -20°C. Minimize freezing and thawing.

Applications Tested

Peptide ELISA: antibody detection limit dilution 1:32000.

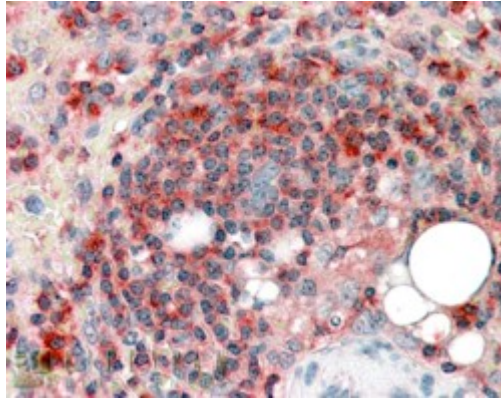
Western blot: Approx 33-34kDa band observed in Hela and Human Skeletal Muscle lysates (predicted MW of 34kDa according to NP_005722). Recommended for use at 0.1-0.5µg/ml.

IHC: In paraffin embedded Human Spleen shows cytoplasm staining in some splenocytes in and around a T-cell area. Recommended concentration, 3-5µg/ml.

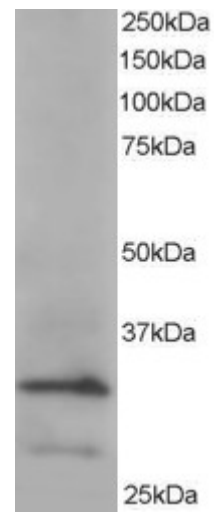
Species Reactivity

Tested: Human

Expected from sequence similarity: Human, Mouse, Rat, Dog, Cow



EB05433 (3.8µg/ml) staining of paraffin embedded Human Spleen. Steamed antigen retrieval with citrate buffer pH 6, AP-staining.



EB05433 staining (0.2µg/ml) of HeLa lysate (RIPA buffer, 35µg total protein per lane). Primary incubated for 1 hour. Detected by western blot using chemiluminescence.