

## UK Office

### Everest Biotech Ltd

Cherwell Innovation Centre  
77 Heyford Park  
Upper Heyford  
Oxfordshire  
OX25 5HD  
UK

Enquiries:

[info@everestbiotech.com](mailto:info@everestbiotech.com)

Sales:

[sales@everestbiotech.com](mailto:sales@everestbiotech.com)

Tech support:

[support@everestbiotech.com](mailto:support@everestbiotech.com)

Tel: +44 (0)1869 238326

[www.everestbiotech.com](http://www.everestbiotech.com)

**Research Use Only. Not for  
diagnostic or therapeutic use.**

## EB05812 - Goat Anti-ARIH1 / HHARI Antibody

Size: 100µg specific antibody in 200µl



### Target Protein

**Principal Names:** ARIH1, HHARI, ARI, HARI, UBCH7BP, ariadne homolog, ubiquitin-conjugating enzyme E2 binding protein, 1 (Drosophila), ariadne homolog, ariadne, Drosophila, homolog of, DKFZp686O13120, FLJ20329, FLJ93118, ariadne ubiquitin-conjugating enzyme E2 binding protein homolog 1

**Official Symbol:** ARIH1

**Accession Number(s):** NP\_005735.2

**Human GeneID(s):** [25820](#)

**Non-Human GeneID(s):** 23806 (mouse)

### Immunogen

Peptide with sequence C-HEGYEKDLWEYIED, from the C Terminus of the protein sequence according to NP\_005735.2.

Please note the [peptide](#) is available for sale.

### Purification and Storage

Purified from goat serum by ammonium sulphate precipitation followed by antigen affinity chromatography using the immunizing peptide.

Supplied at 0.5 mg/ml in Tris saline, 0.02% sodium azide, pH7.3 with 0.5% bovine serum albumin.

Aliquot and store at -20°C. Minimize freezing and thawing.

### Applications Tested

**Peptide ELISA:** antibody detection limit dilution 1:32000.

**Western blot:** Approx 65kDa band seen in U937 lysate [Predicted MW of approx. 61kDa according to NP\_005735]. Recommended for use at 0.2-1µg/ml.

**IHC:** Paraffin embedded Human Adrenal Gland. Recommended concentration: 5µg/ml.

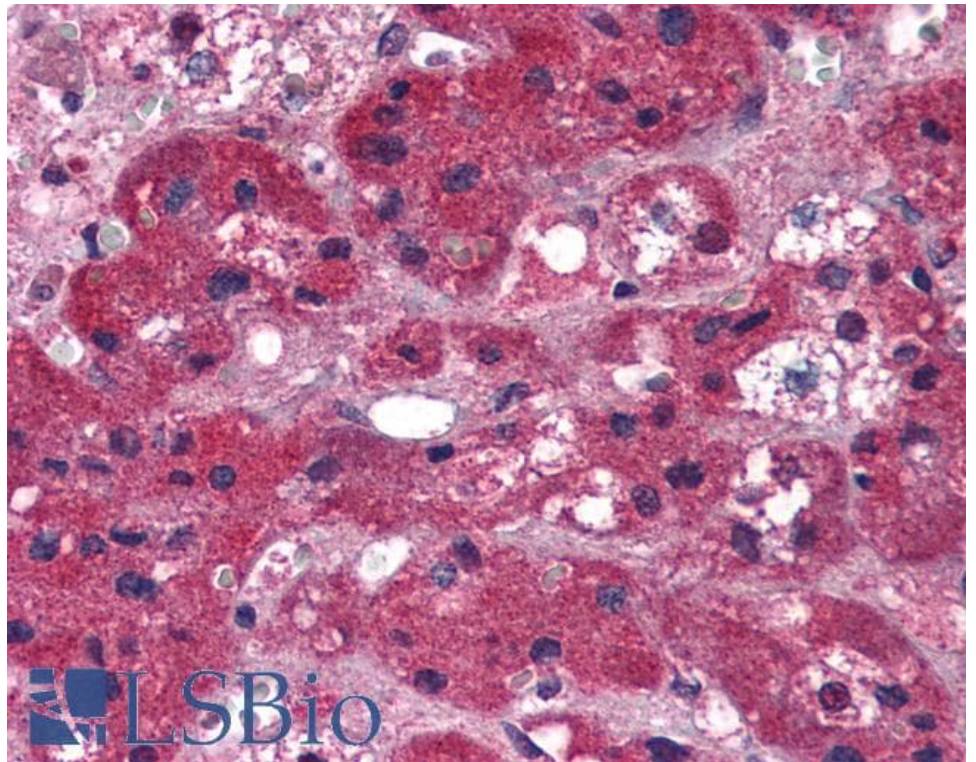
### Species Reactivity

**Tested:** Human

**Expected from sequence similarity:** Human, Mouse, Cow



EB05812 staining (0.5 $\mu$ g/ml) of U937 lysate (RIPA buffer, 30 $\mu$ g total protein per lane). Primary incubated for 1 hour. Detected by chemiluminescence.



EB05812 (5 $\mu$ g/ml) staining of paraffin embedded Human Adrenal Gland. Steamed antigen retrieval with citrate buffer pH 6, AP-staining.