



UK Office

Everest Biotech Ltd

Cherwell Innovation Centre
77 Heyford Park
Upper Heyford
Oxfordshire
OX25 5HD
UK

Enquiries:

info@everestbiotech.com

Sales:

sales@everestbiotech.com

Tech support:

support@everestbiotech.com

Tel: +44 (0)1869 238326

www.everestbiotech.com

**Research Use Only. Not for
diagnostic or therapeutic use.**

EB07697-B - Goat Anti-Argininosuccinate synthetase 1, Biotinylated Antibody

Size: 100µg specific antibody in 200µl



Target Protein

Principal Names: ASS1, argininosuccinate synthase 1, ASS, CTLN1, argininosuccinate synthetase 1, citrulline--aspartate ligase, citrulline-aspartate ligase

Official Symbol: ASS1

Accession Number(s): NP_000041.2

Human GeneID(s): [445](#)

Non-Human GeneID(s): 11898 (mouse), 25698 (rat)

Important Comments: Reported variants represent identical protein: NP_446464.1, NP_000041.2

Immunogen

Peptide with sequence C-ENPKNQAPPGLYTKTQD., from the internal region of the protein sequence according to NP_000041.2.

Please note the [peptide](#) is available for sale.

Purification and Storage

Purified from goat serum by ammonium sulphate precipitation followed by antigen affinity chromatography using the immunizing peptide.

Supplied at 0.5 mg/ml in Tris saline, 0.02% sodium azide, pH7.3 with 0.5% bovine serum albumin.

Aliquot and store at -20°C. Minimize freezing and thawing.

Applications Tested

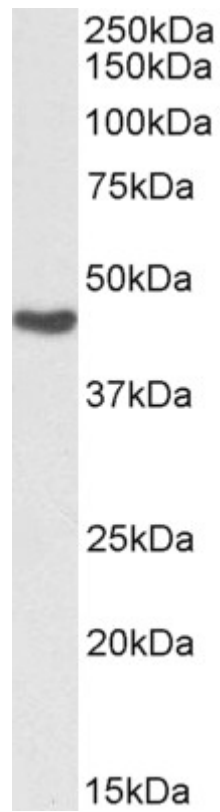
Peptide ELISA: antibody detection limit dilution 1:64000.

Western blot: Approx 46kDa band observed in Human Kidney lysates (calculated MW of 46.5kDa according to NP_000041.2). See non-biotinylated parental product's datasheet for further QC data. Recommended concentration: 0.01-0.03µg/ml.

Species Reactivity

Tested: Human, Cow

Expected from sequence similarity: Human, Mouse, Rat, Dog



Biotinylated EB07697 (0.03 μ g/ml) staining of Human Kidney lysate (35 μ g protein in RIPA buffer), exactly mirroring its parental non-biotinylated product. Primary incubation was 1 hour. Detected by chemiluminescence, using streptavidin-HRP and using NAP blocker as a substitute for skimmed milk.